

SUMMARY OF CHANGES IN THE TOWN CENTRE

Accessible Parking

The angled accessible car park outside #134 The Parade is being relocated to Medway Street. To accommodate this, the taxi stand on Medway Street is being moved to the west and the P60 car parks at this location are reduced from 2 spaces to 1 space.

Time-Restricted Parking

There are currently **50 P60 car parks in the town centre**, 38 of which are on The Parade. In the design, this is reduced to 35 P60 car parks. Therefore, 15 P60 car parks need to be relocated to maintain the existing number of time-restricted spaces (2 removed from Medway Street and 13 removed from The Parade). The 15 new P60 parking spaces are distributed as follows:

- 3 parallel parking spaces on The Parade, just south of Avon Street
- 6 parallel parking spaces on The Parade, south of Medway Street
- 6 angled parking spaces on Medway Street

Four car parks on Avon Street could be converted to P60 to achieve a total of 54 P60 car parks (the total number of P60 parks indicated in the draft PMP).

LEGEND

-  UNCHANGED
-  RESTRICTED PARKING
-  REDUCED RESTRICTED PARKING
-  NEW RESTRICTED PARKING
-  TIME-RESTRICTED PARKING
-  ACCESSIBLE PARKING
-  TAXI STAND

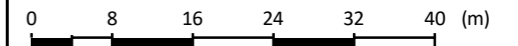
EXISTING:
5 x marked P60 SPACES

APPROVED:
3 x unmarked P10 7am-10am and 3pm-6pm, P60 otherwise
1 x unmarked P60 SPACES

RELOCATED:
1 x P60 SPACE



A3 SCALE: 1:750



1. World Imagery Source: Esri, Maxar, GeoEye, Earthstar Geographics, CNES/Airbus DS, USDA, USGS, AeroGRID, IGN, and the GIS User Community

EMAIL RESPONSE 2023.10.02 WCC

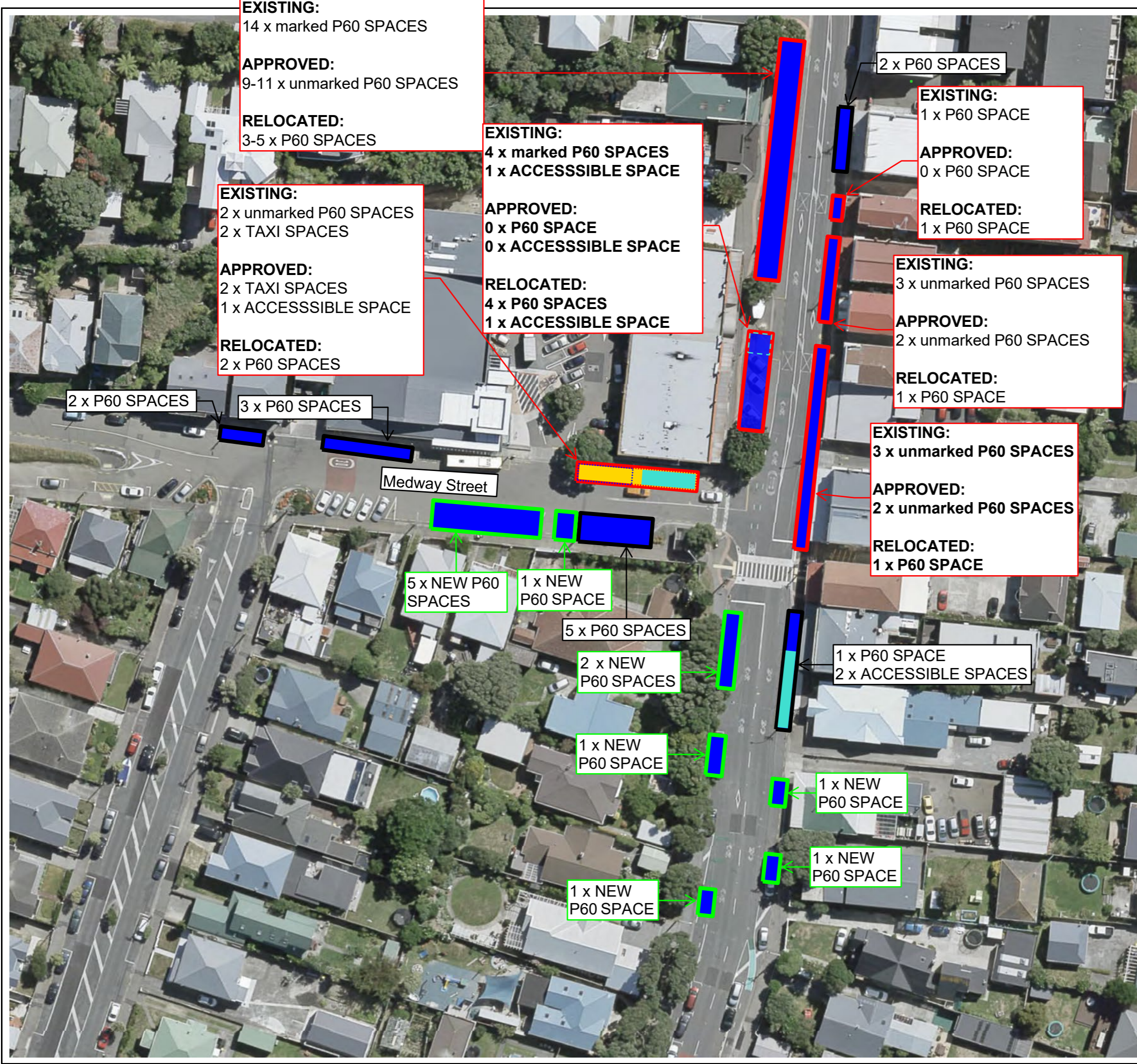
Created On:	03/12/2022
Created By:	TB
Approved By:	
TT Proj Ref:	1016611
TT Map Ref:	TTMAPREF1433463001.902



Tonkin+Taylor
105 Carlton Gore Road, Newmarket, Auckland
www.tonkintaylor.co.nz

WELLINGTON CITY COUNCIL
THE PARADE
Parking relocations
Town centre

FIGURE No.
002



EXISTING:
14 x marked P60 SPACES

APPROVED:
9-11 x unmarked P60 SPACES

RELOCATED:
3-5 x P60 SPACES

EXISTING:
2 x unmarked P60 SPACES
2 x TAXI SPACES

APPROVED:
2 x TAXI SPACES
1 x ACCESSIBLE SPACE

RELOCATED:
2 x P60 SPACES

EXISTING:
4 x marked P60 SPACES
1 x ACCESSIBLE SPACE

APPROVED:
0 x P60 SPACE
0 x ACCESSIBLE SPACE

RELOCATED:
4 x P60 SPACES
1 x ACCESSIBLE SPACE

2 x P60 SPACES

EXISTING:
1 x P60 SPACE

APPROVED:
0 x P60 SPACE

RELOCATED:
1 x P60 SPACE

EXISTING:
3 x unmarked P60 SPACES

APPROVED:
2 x unmarked P60 SPACES

RELOCATED:
1 x P60 SPACE

EXISTING:
3 x unmarked P60 SPACES

APPROVED:
2 x unmarked P60 SPACES

RELOCATED:
1 x P60 SPACE

1 x P60 SPACE
2 x ACCESSIBLE SPACES

1 x NEW P60 SPACE

1 x NEW P60 SPACE

5 x P60 SPACES

2 x NEW P60 SPACES

1 x NEW P60 SPACE

1 x NEW P60 SPACE

5 x NEW P60 SPACES

1 x NEW P60 SPACE

2 x P60 SPACES

3 x P60 SPACES

Medway Street

- LEGEND**
- UNCHANGED RESTRICTED PARKING
 - REDUCED RESTRICTED PARKING
 - NEW RESTRICTED PARKING (TO MAKE UP FOR REMOVED SPACES)
 - TIME-RESTRICTED PARKING
 - ACCESSIBLE PARKING
 - TAXI STAND

A3 SCALE: 1:750

1. World Imagery Source: Esri, Maxar, GeoEye, Earthstar Geographics, CNES/Airbus DS, USDA, USGS, AeroGRID, IGN, and the GIS User Community

EMAIL RESPONSE 2023.10.02 WCC

Created On:	03/12/2022
Created By:	TB
Approved By:	
TT Proj Ref:	1016611
TT Map Ref:	TTMAPREF1433463001.902

Tonkin+Taylor
105 Carlton Gore Road, Newmarket, Auckland
www.tonkintaylor.co.nz

WELLINGTON CITY COUNCIL
THE PARADE
Parking relocations
Town centre