

Frederick Street Park project

Improving the provision of green space in Te Aro

We've set out to increase the amount of green space in the Te Aro precinct, in line with our Green Network Plan.

Currently, Te Aro only has three active/passive recreation spaces, available for inner city residents, consisting of Cobblestone Park, Te Aro Park and Glover Park. To align with the area's projected population growth, Te Aro will require additional green/public open spaces for residents to use, to create a positive experience for inner city living, and improve resident wellbeing.

Frederick Street Park is the first of two new green spaces being created in line with the Green Network Plan's targets and has been designed with community input.

Project priorities

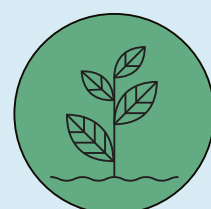
The aim of the project is to deliver a quality open green space which is primarily for the health and wellbeing of inner city residents and visitors, ensuring a safe and accessible park for all.

In addition, the project is focused on delivering environmental and cultural benefits; with consideration of water sensitive design solutions and seeking to strengthen cultural identity through cultural and heritage interpretation outcomes.



Partnership with mana whenua

Working in meaningful partnership with mana whenua to shape and contribute to project outcomes.



Increased greening

Align with the Green Network Plan's key objectives and Our City Tomorrow goals for a greener city.



Accessibility

Create a space that is inclusive and welcoming for all users.



Water sensitive design

Consider opportunities for improving wai ora (water health) and storm water management.

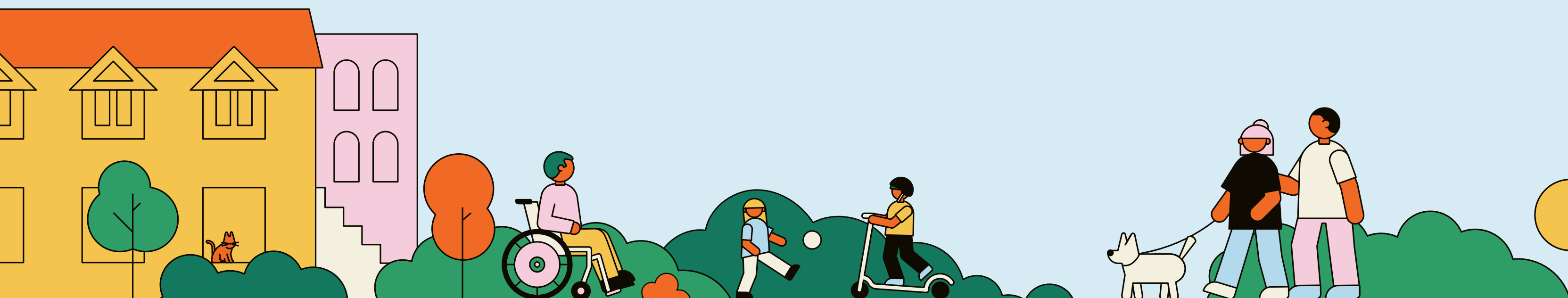


Safety

Deliver on Pōneke Promise objectives to design public spaces that are safe, vibrant, welcoming, and well-maintained.

**Absolutely Positively
Wellington City Council**

Me Heke Ki Pōneke



Where is Frederick Street Park?

Context

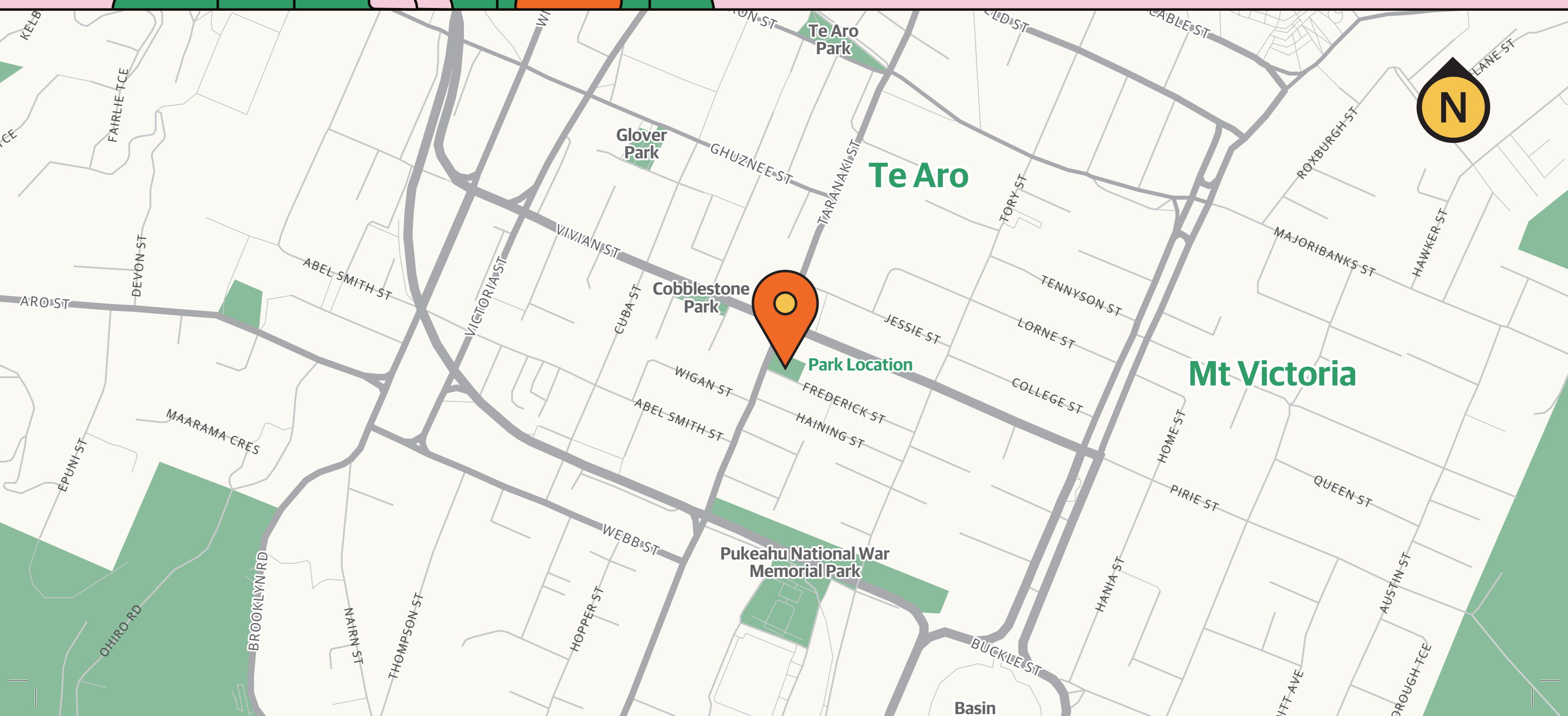
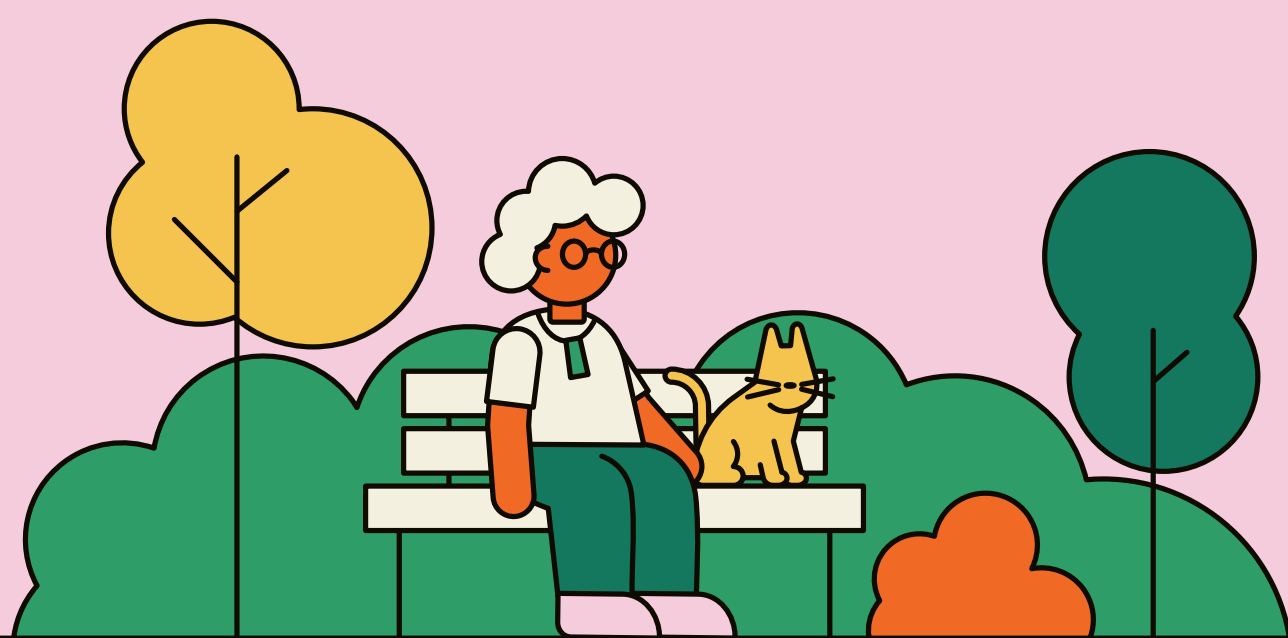
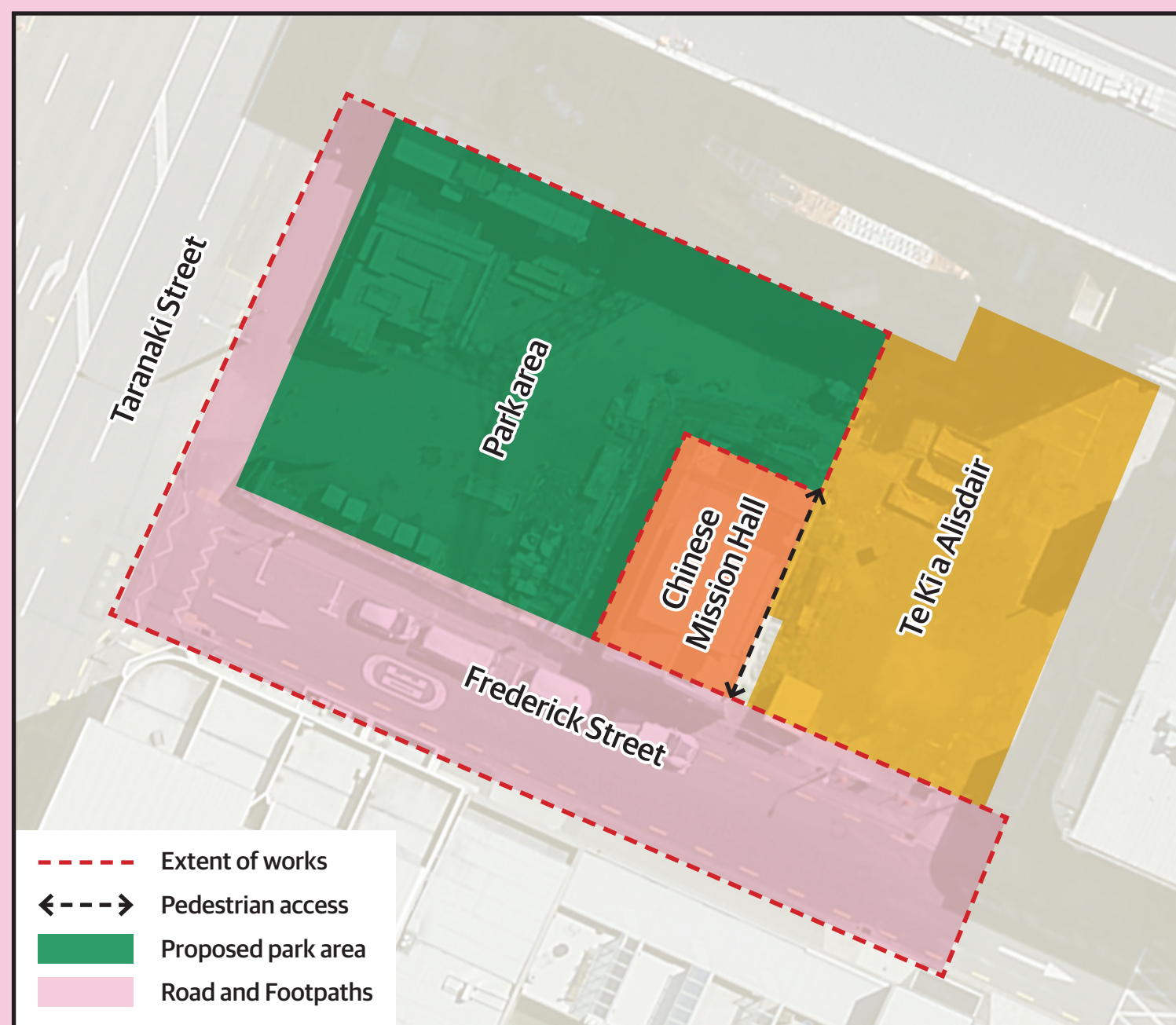
We are working closely with adjoining owners to seek positive outcomes in relation to the proposed park.

Chinese Mission Hall building

To remain in situ, but is outside the project scope. Privately owned, it is to be strengthened and refurbished for future use.

Te Ki a Alisdair

New residential apartment block adjoining the site. A social housing initiative for long-term tenancy.



What you told us

When asked what you wanted to see in the new space, the key themes of your submissions were safety, green, lighting, seating and play.

Common concerns included requests to make the park inclusive, accessible, clean, and safe.

As the site is on Taranaki Street, many submitters called for protection from traffic, wind, noise, and anti-social behaviour. Responses sought the development of a park that enables connection and play, expresses cultural and artistic elements reflective of Māori and Chinese heritage, and provides amenities such as tables, benches, lighting and a focus on nature, provision of clean drinking water, and toilets for health and hygiene.

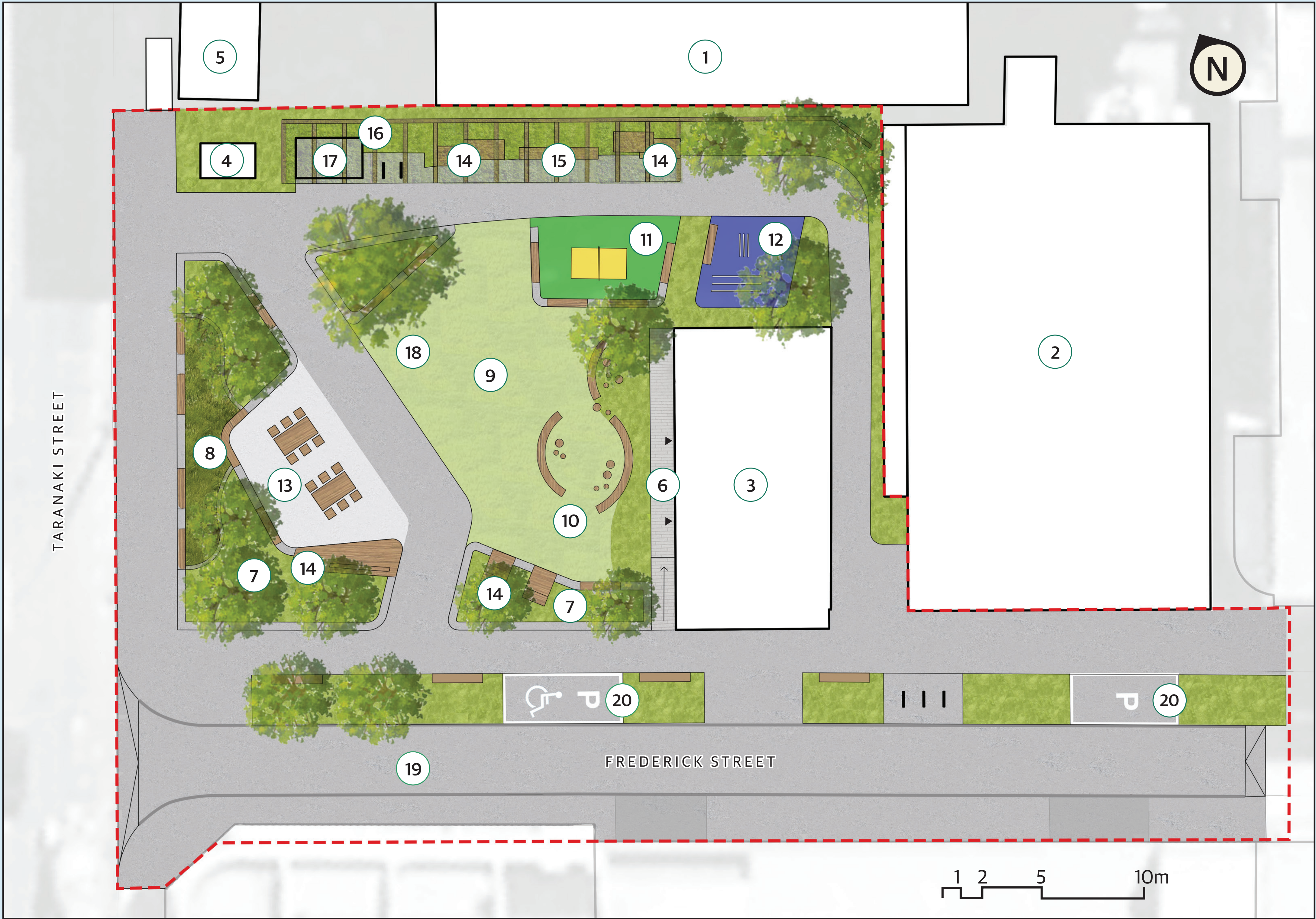
What you wanted to see in the space:

- **Consider a range of seating opportunities that are well-designed, comfortable, and accessible.**
"Please have seating for single persons as well as for family/friend groups with tables."
- **Recognise and celebrate cultural diversity within the park's design.**
"Recognition of Māori history and Chinese history."
- **Design a space that accommodates various forms of play, recreation, and community gatherings.**
"Consider table tennis table, a badminton area, or a chess/mahjong area."
- **Enhance safety, design for clear sightlines and visibility, minimise hiding spots and ensure well-lit areas, especially during night-time.**
"Want people to feel safe, especially at night."
- **Incorporate greenery, trees, native plants, and grassy areas for an enriched natural environment that attracts wildlife and supports local ecological diversity.**
"Let's get creative with the landscaping and introduce plants that give the space character."
- **Consider shelter and shade features to ensure comfort during varying weather conditions.**
"Shelter from wind and rain."
- **Ensure safety and separation from Taranaki Street traffic.**
"Very close to the road – may be important to think about barriers."
- **Design a space that supports safe social interaction, fostering a sense of community and belonging.**
"Create a sense of place for community, to provide sensory-rich seasonal interest for human health and wellbeing."
- **Include accessible amenities such as well-maintained spaces, clean restrooms, and clean drinking water sources for overall health.**
"Maintenance and kaitiakitanga of the park."
- **Design the new park to be inclusive, welcoming, and accessible to all community members.**
"Teenage kids have very few spaces to hang out and parks like that would be great for them."

Concept plan

It is a priority within the project to deliver lighting for safety and create a warm and welcoming atmosphere within the park.

As the design develops, it will include street lighting, general park and path lighting and amenity lighting that will highlight features and artworks within the park.



Art and culture

Bringing cultural identity, a sense of belonging and connection to place is an integral goal for Frederick Street Park. To achieve this, we have commissioned artists Matthew McIntyre Wilson (Taranaki, Ngā Māhanga and Titahi) and Kerry Ann Lee, a third generation Seyip Cantonese New Zealander to lead creative and cultural expression in the new park.

The artists will work collaboratively to incorporate art and design features that speak to the cultural heritage of the area. Both artists acknowledge the rich history of the whenua, which was once part of a cultivated area that served Te Aro pā kainga, and was later a cultural hub for the early Cantonese Chinese community. The artists' kaupapa is for Frederick Street Park to be an inclusive space that fosters hauora (wellbeing) and social connections. They will draw on Matthew's background in raranga (weaving) and Kerry Ann's design and collage practice to create artworks that reflect connections between Māori and Chinese cultures.

Further conversations with iwi and the project artists have highlighted the aligned values of wai ora (water health) across both Māori and Chinese culture. This will see planting and water sensitive design (WSD) solutions as an integral part of delivering these values within the park. We continue to work with our WSD consultant to optimise benefits of treating Taranaki Street runoff with a rain garden; using the grading of the site to manage stormwater flows and direct water into gardens for passive irrigation, as well as exploring the opportunities to utilise rainwater runoff from surrounding building for reuse within the park irrigation and public toilet facilities.



**Absolutely Positively
Wellington City Council**
Me Heke Ki Pōneke



Standing by Taranaki Street, looking into the park. Seating and planting buffer can be seen on the right, separating the park from Taranaki Street. The Chinese Mission Hall sits at the back of the park, fronted by a lawn for play and relax. Public toilets are located to the left, positioned pathway that leads around the Chinese Mission Hall, this path also provides access to a ping-pong table and outdoor exercise equipment.

Artist impression, subject to change.



Standing on the lawn looking back out towards Taranaki Street. This area provides a large variety of seating and play opportunities: reclined seating to the left, a set of tables and a large group seat to the rear, curved seats and logs for play and sitting to the right, a collection of swing seats to the far right, and a series of bench seats placed throughout the park. Planted climbers to provide additional greening and public toilets can be seen at the rear.

Artist impression, subject to change.

Next steps

We want to hear your thoughts on the proposed design for Frederick Street Park!

Thank you to everyone who helped shape the concept in our pre-engagement process.

You can have your say on the Let's Talk page until 5pm 27 October. This will be received by the project team for consideration as we continue the design process.

The project team will be working hard to adapt our concept design with consideration of what we heard from the feedback received through our engagement with key stakeholders and project partners.

We will share the developed design with the public in 2024. This design iteration will show greater detail, including the integration of the cultural artworks, any changes to accommodate water sensitive design systems and greater clarity on things like materials and planting. This design will also take into consideration any public feedback or suggestions made through the engagement of the current concept design.



Keep informed



To learn more about the park as we progress, visit the project's website:

letstalk.wellington.govt.nz/frederick-street-park

**Absolutely Positively
Wellington City Council**

Me Heke Ki Pōneke