



# CONCEPT DESIGN ENGAGEMENT REPORT FREDERICK STREET PARK

---

2023



# TABLE OF CONTENTS

Introduction	1
Concept Design	2
Feedback	3
Conclusion	11

# INTRODUCTION

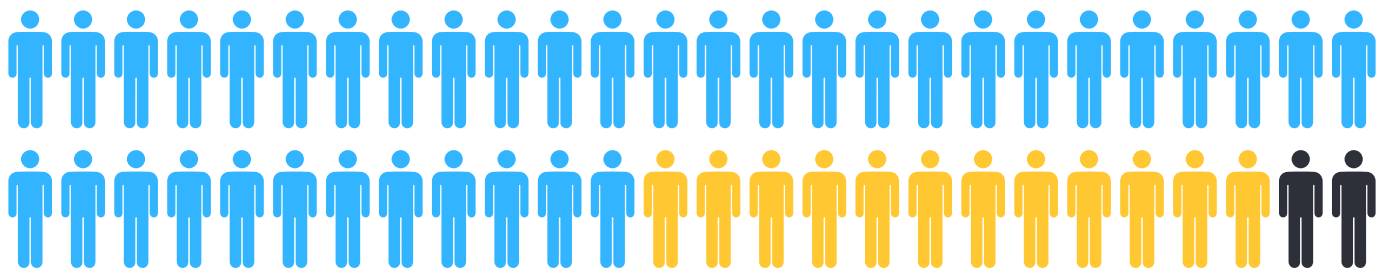
In October 2023, we released information about the concept design for the Frederick Street Park Project, asking the community their thoughts and concerns about the provided design. This was to understand if the project team's direction aligned with the public opinion submitted in July and was a park that people could see themselves using.

The chance to provide feedback was open for two weeks, gathering 56 responses. The majority of the responses were positive, most showing support for the design with some sharing suggestions for design changes.

The feedback for the concept design reveals key themes: support for its diversity and early input integration, a desire for more greenery, water-sensitive design, varied seating, and a planted buffer on Taranaki Street. The community emphasizes the importance of integrating play into the design. We received specific feedback regarding the following items: amenities, shelter, public toilets, bike parking, cultural expression and concerns about noise and lighting.

This report will reflect on each theme highlighted from the feedback, acknowledging what people have suggested, and provides responses from the design team.

We will share the developed design with the public in 2024.



- 42 people were very supportive
- 12 people were supportive
- 2 people were not supportive

# CONCEPT DESIGN

This was the plan submitted to the public for feedback.



The aim of the project is to deliver a quality open green space that is primarily for the health and well-being of inner-city residents and visitors, ensuring a safe and accessible park for all.

Bringing cultural identity, a sense of belonging and connection to place is an integral goal for Frederick Street Park. The Māori and Chinese artists will work collaboratively to incorporate art and design features that speak to the cultural heritage of the area.

It is a priority within the project to deliver lighting for safety and create a warm and welcoming atmosphere within the park. As the design develops, it will include street lighting, general park and path lighting and amenity lighting that will highlight features and artworks within the park.



# FEEDBACK

## OVERALL DESIGN

In general, people support the proposed design, mentioning the variety of spaces with different uses in balance with flexible open space as a good aspect. Responses acknowledging that previous early engagement has been incorporated into the proposed design.

### Quotes

- *"I love all of the elements you've managed to include in such a small area without sacrificing open space."*
- *"I am pleasantly surprised and excited about how much you were able to fit into the proposed park space which is directly based on the survey feedback"*
- *"Fantastic idea to create more green space. Taranaki Street has been missing people-centric spaces."*

### Officer's Response

We are glad to see our goal of providing a variety of activities and uses has been portrayed well, and that many have been able to see a direct response in the design to their original public feedback.

## TARANAKI STREET BUFFER

The idea of a planted buffer between the park and Taranaki St is well-received, and people emphasize the importance of such a buffer. Some respondents want to see a greater buffer with more planting. There have also been concerns raised that the proposed buffer might block sightlines into the park.

### Quotes

- *"I am a bit worried that the planting buffers separating the park from Taranaki street are too low"*
- *"Love the blocking from Taranaki St, and I'd rather face inwards than out to the streets."*
- *"a good balance between creating shelter from the busy road and maintaining good sight lines for safety."*

### Officer's Response

It was important to create a balance between retaining usable park space and provide a planted buffer to create some separation from the busy street environment.. It was also important that we retain sight lines, and ensure that everybody in the park still feels safe and not isolated. The buffer will remain open between the ground planting and tree canopy to ensure these sightlines.

# GREENING

The public supports more greening in the city and thinks Frederick St would be a good location for a new park. There is a demand for native plantings that attract birds as well. Planting along Frederick St is supported, though some were concerned about the removal of car parks.

## Quotes

- *"perfect location for some greening - the surrounding area is rather sparse when it comes to public green space"*
- *"it's great to have the lack of green spaces beginning to be addressed in the capital"*
- *"would love to have a green area where I can sit outdoors with my dog in the evenings and have picnics and enjoy the green space."*
- *"I'm not opposed to removing parking in principle, but it's hard to see the benefit of removing 8 existing parks for no increase in the usable area of the park."*
- *"Love that it removes car parks and replaces with green space. Love the rain gardens and trees."*

## Officer's Response

The current number of 5 car parks along this edge has been reduced to accommodate more greening, install a fully accessible car park alongside the park. and enables us to provide additional bike racks to accommodate a diverse range of transport options.

The garden beds that line Frederick St are a continuation of the buffer planting with low lying shrubs, adding a layer of separation from the nearby traffic and allowing the park users to feel safe and relaxed within the park.

## WATER-SENSITIVE DESIGN

This has been highlighted as a positive contribution to the park and a wish to highlight water even more in the design has been raised.

### Quotes

- *"Proposed stormwater capture from the roof is achievable and rain gardens between Frederick St car parks will work but raised beds can't receive stormwater"*
- *"draw on the history and the shared values about water"*

### Officer's Response

We are working with a water-sensitive design expert to ensure the developed design best accommodates water on site. This will likely see some adjustments to the design of garden beds to maximise passive irrigation. Water-sensitive design solutions such as raingardens need to be appropriately designed in response to the conditions and size of this site.

## NOISE

People highlighted that the planted buffer won't be enough to mitigate noise from Taranaki St. There are some concerns about noise during the night disturbing residents. These concerns include noise from skateboarding and noise from people using table tennis and gym equipment.

### Quotes

- *"there needs to be more shelter against the Taranaki Street side for weather and noise pollution from the busy road"*
- *"skateboarding noise is very intrusive to nearby apartments"*
- *"Keep noise and light down at night to respect surrounding residents"*

### Officer's Response

It is accepted that planting alone will not remove the noise, given the location of the park in the central city. The project will not be able to completely isolate the park from the noise and activity typical within a city environment. The design team acknowledge these needs of local residents and must balance this with providing positive activation of inner city public spaces..

The park is not a skatepark, however, skateboarding is recognised as a viable means of transport, community recreation, and positive sport activity for many people.



## SEATING

People like the variety of seating proposed in the design as it caters to a wide range of user needs. A need for backrests and sufficient armrests has been raised in the comments.

### Quotes

- *"More swing seats in outdoor parks!"*
- *"Variety of seating and options looks like it caters to lots of different needs which I love"*
- *"Would like to suggest that any setting you have has backs on it."*

### Officer's Response

We strived to create a lot of different seating options within the park design as requested in the initial public feedback, and have made sure to include seating with backrests and armrests to align with our accessibility goals for the park.

## PLAY

In many submissions, participants mention how important it is to integrate play into the design and would like to see more play in the park, including accessible play.

### Quotes

- *"I'd really love a slide and/or small swingset to be added into the open area, as there are barely any decent places in the inner city for children to play"*
- *"allow for some play equipment while accepting that there is limited space"*
- *"I really would like to see some sort of kids play equipment in the park."*
- *"it is also important to ensure not all the play areas are on the grass as this is inaccessible to wheelchair users."*

### Officer's Response

The intention of this project is not to deliver a playground. Although, in response to public feedback, we have integrated forms of activity and play that cater to a wide range of users. This is inclusive of things such as nature play through the garden, table tennis, swing seats and gym equipment. With the inclusion of an open lawn to allow for alternative activities.

## SHELTER

There is a difference of opinion regarding shelter. There are some respondents who want to see more shelter across the park, and there are others who are concerned about the site being too shaded. There are also concerns expressed about shelters attracting rough sleeping and anti-social behaviour.

### Quotes

- *"I hope theres lots of covered/shaded area and good protection from the wind!"*
- *"I don't see any rain coverings over seating areas"*
- *"I think there needs to be more shelter against the unpredictable Wellington weather"*
- *"Love it! As an apartment dweller I'd love somewhere safe and sheltered to go and enjoy green space"*

### Officer's Response

We are providing shelter along the northern edge which covers a variety of seating. Tables and seating have also been placed in the sunniest locations in the park with trees to provide an opportunity for shade over these areas.

## CULTURAL EXPRESSION

People are intrigued to see what this will be but have also expressed disappointment that it's not visible in the concept design presented for public engagement.

### Quotes

- *"I like how artists will be involved"*
- *"We support the park reflecting the area's significance to both the Chinese community and tangata whenua"*
- *"Would really like to see reference to both Maori and Chinese history of this unique area's Chinese settlement and history"*

### Officer's Response

We are working closely with the Māori and Chinese artists to ensure clear narratives are well integrated into the park. We will release more information in the following design stages.

# LIGHTING

People are asking about lighting because it was not shown on the plan.

## Quotes

- *"(CPTED) principles strongly advocate lighting to deter anti-social behaviour"*
- *"Beautiful concept design, is there going to be lighting?"*

### Officer's Response

We mentioned on our concept plan, that while lighting locations have not been specified, there will certainly be light included in the final design. This lighting we implement will be for safety and amenity, seeking to establish warm and welcoming park environment.

# AMENITIES

The majority of responses are positive about the variety of amenities and the proposed table tennis and exercise equipment. Some respondents believe it will be too crowded to include these and prefer to plant more instead.

## Quotes

- *"table tennis seems like it will be potentially unusable given the wind in this completely exposed area"*
- *"I rarely see exercise equipment in parks be used, so personally, I'd prefer big trees, and grassy areas."*
- *"Love the inclusion of a water fountain, covered seating, swings and workout equipment"*
- *"excited to see a pingpong table"*

### Officer's Response

In our initial engagement, we received many requests for outdoor activity and exercise equipment. This illustrated a desire for more active recreation opportunities in the inner city.

We have been reviewing wind studies of the site to understand these impacts. This confirmed the location of these activities are within an area of the site that is less impacted by the wind.

It was also considered important that we create a presence of people through activation, within this corner of the park.

# PUBLIC TOILETS

In general, people support public toilets to make the park more accessible. There have also been concerns raised around public toilets attracting anti-social behaviour.

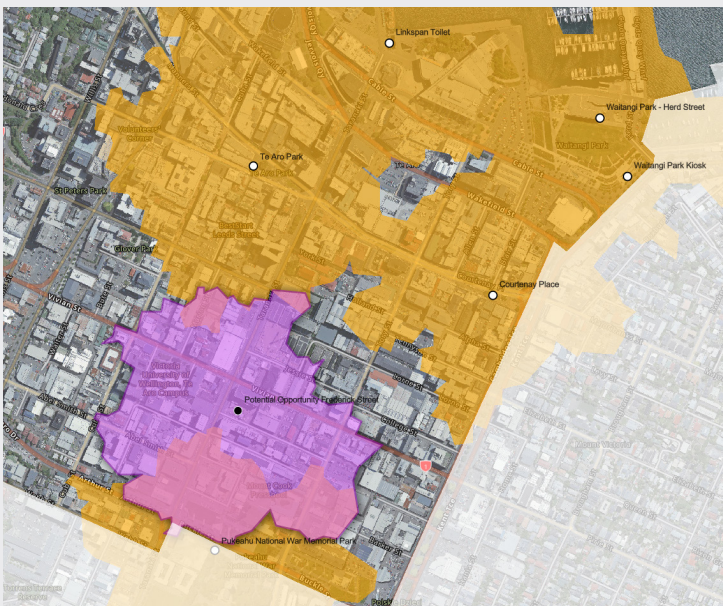
## Quotes

- *"Love the bike parking, toilet and drinking fountain, all essential when my kid is with me."*
- *"from my experience as an inner-city resident public toilets attract crime, drug deals etc"*
- *"Public toilet also, yay!"*
- *"pleased to see supportive seating and toilets have been included in the current plan"*

## Officer's Response

With accessibility being a priority for this project, the provision of public toilets makes these spaces more accessible for many people including those who are elderly, disabled or with children.

There is a gap within the inner city public toilet network, as illustrated in the map below. The proposed public toilets in the Frederick St Park project would help to fill this gap in the network, providing for the catchment area illustrated in pink.



# BIKE PARKING

More bike parking has been requested. This includes bike parking for e-scooters and long cargo bikes for families with kids.

## Quotes

- *"I think slightly more bike parking/more secure bike parking would be ideal"*
- *"please include secure parking for bicycles, such as Sheffield stands. You might want to locate these on space currently used by car parking,"*
- *"Please actively discourage riding of bikes and electric scooters"*
- *"would be amazing to see these plans evolve into making the centre city even more walkable/pedestrian/biker friendly"*

## Officer's Response

This project will provide options for alternative modes of travel to encourage more people to walk, bike and scooter within the inner city.

# CONCLUSION

The community feedback on the Frederick Street Park Project concept design has provided valuable insights into various themes. Overall, the majority of respondents expressed support for the design's diversity and its alignment with early engagement input.

Greening and water-sensitive design were highlighted positively, along with a desire for increased play integration and cultural expression. We received various opinions on amenities, shelter, public toilets, and bike parking, reflecting diverse community perspectives. Concerns about noise, particularly from skateboarding and park activities, were raised, prompting the need for thoughtful design solutions. Lighting and the balance between shelter and open spaces also emerged as key considerations.

The project team will be working hard to adapt our concept design with consideration of what we heard from the feedback received through our engagement with key stakeholders and project partners.

We will share the developed design with the public in 2024. This design iteration will show greater detail, including the integration of the cultural artworks, any changes to accommodate water-sensitive design systems and greater clarity on things like materials and planting.

