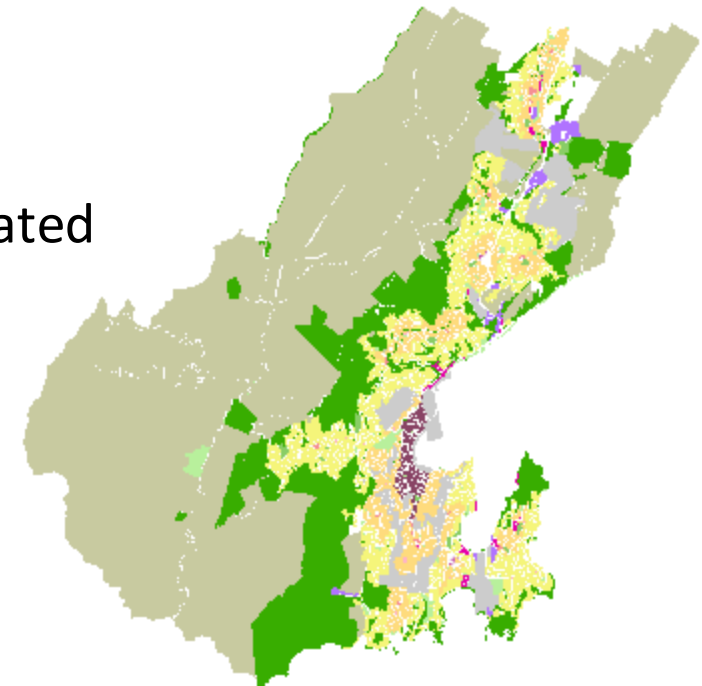


Wellington Rural Zone

Proposed District Plan Impacts

Wellington's South West Rural Zone

- Cohesive Community of Wellingtonians, first and foremost:
 - Dealing with the harshest of Wellington's winds,
 - Dealing with the steepest topology around,
 - Showing a Wellingtonian, no-complaint, can-do spirit, self-building access, services, homes, community,
 - Protecting ecology: we bought it, we maintained it, we've donated it. We have several trusts amongst us & Zealandia GWRC trapping, culling, kiwi releasing.
 - Largest area of Wellington by a wide margin,
 - Long Gully alone is 900 hectares.
 - Most properties are larger than Matiu/Somes island (24ha).
 - Weekenders cross our lands.
 - WCC Rate payers.
 - Hard, hard, work. Every day.



We are a Cohesive Wellington Community

- The common landscape & issues, makes us a cohesive and aligned neighbourhood.
- As a community:
 - engaged with Council extensively in 2019 and 2020
 - to discuss the future of our land, access to it, use of it, plans for it
 - were told by council officials we would be engaged with as a community
 - shared with them, major & councilors our unanimously signed **Community Vision Statement**
- Then Covid:
 - Hit both WCC and us
 - The engagement process was aborted & contact points disappeared
- Erratic Continuance:
 - We have continued to engage with council as we could where we could
 - with individual submissions, like this one,
 - representing the unwavering views of the majority Wellington rural community.

How we got to today: the District Plan

- It's only 5 minutes to sum up 20 years of aspirations. But we appreciate the opportunity.
- In our community's view the current Proposed Plan is:
 - Not informed by engagement or our community vision (but is by 20 year old ones)
 - Limiting opportunity:
 - Subdivision cadence is slow 5 years and large rural (30ha) plots limiting sellability
 - to 1 Residential Units per title, impacting continuity to children and grandchildren as well as rural assistance
 - Limiting traditional rural activities: rural clearing, earthworks, tilling, farming, tracks to get around
- Against a background of constant agenda of constraints:
 - Ridgetops Overlays, RMA Covenants, SNAs
 - Slow changing of our access road to our properties to being referred to as "*recreational*"
 - Abatement of traditional rural activities (for repairs, tilling, farming, current and future access).
- Some have commented on the Plan in piecemeal fashion. For example, we've fed back:
 - on the SNAs
 - on the changed NPS based definition of "Building" capturing *everything*
- It took us -- maybe too long -- to redefine our common *issues* and desired *outcomes*, for the *whole community*.

2 key Issues

- The plan reaffirms we are defined as a rural zone -- in name only.
 - Promotes the removal of:
 - Increasing access for rural activities
 - Housing for family continuity
 - Housing for seasonal and year around assistance
 - Promoting instead something for entitled people playing at rural.
- Doesn't recognize the current community:
 - Referring back to 20 year old community engagement statements,
 - Ignoring our current context and community vision statement
 - While enabling the objectives of consultants who live outside our community.

Opportunity based Outcome

- It won't cost Wellington's anything:
 - Same shared access, same rural openness, same ecology
- We ask to have opportunity of:
 - family continuity
 - farming assistance
 - Diversifying income by meeting demand outlined in WCC planning documents
- To share their opportunity:
 - 3 residential units usable for caravans, tiny homes, extended family living
 - Subdivision down to 4ha.
 - visitors amenities clarity (outdoor summer cafes, etc.)

Thank you

- Your consideration and application of our suggestions into the district plan will change for the better a small, but cohesive, community of Wellingtonian Families for the next 20 years.
- We, admittedly, are not many votes. But still Wellingtonians.