

# Long Gully

## In Relationship to Wellington





0 500 1,000 m



# Long Gully

## Property In relationship to Long Gully



The property is 33ha, part of the original Long Gully farm. Rugged and steep and windy, while of marginal value for traditional crop, it has the potential of being a supplier to the capital's food suppliers of higher value crop.

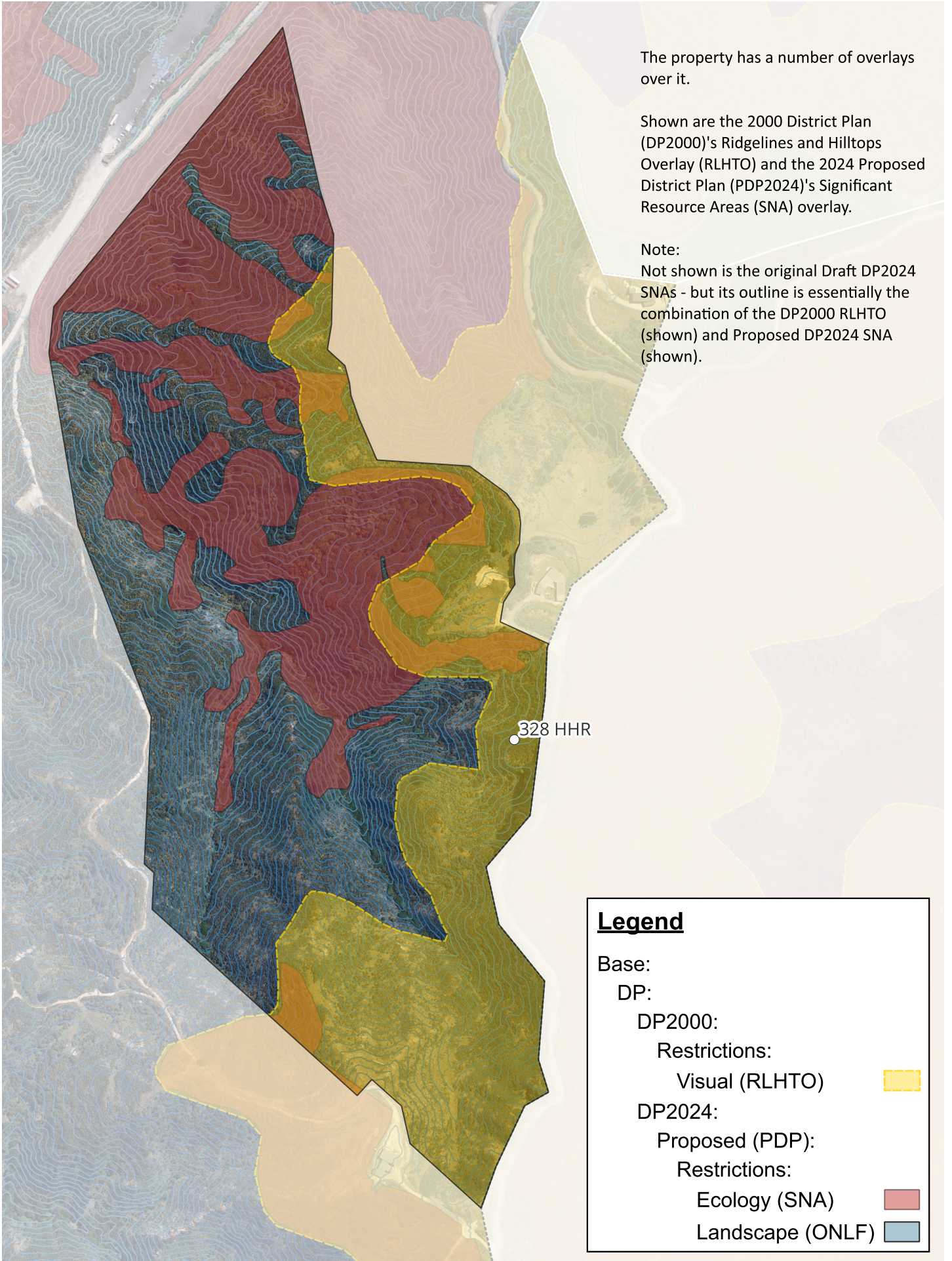


0 50 100 m



# Long Gully

## Current [Existing & Proposed] Overlays



The property has a number of overlays over it.

Shown are the 2000 District Plan (DP2000)'s Ridgelines and Hilltops Overlay (RLHTO) and the 2024 Proposed District Plan (PDP2024)'s Significant Resource Areas (SNA) overlay.

Note:

Not shown is the original Draft DP2024 SNAs - but its outline is essentially the combination of the DP2000 RLHTO (shown) and Proposed DP2024 SNA (shown).

### Legend

Base:

DP:

DP2000:

Restrictions:

Visual (RLHTO)



DP2024:

Proposed (PDP):

Restrictions:

Ecology (SNA)



Landscape (ONLF)



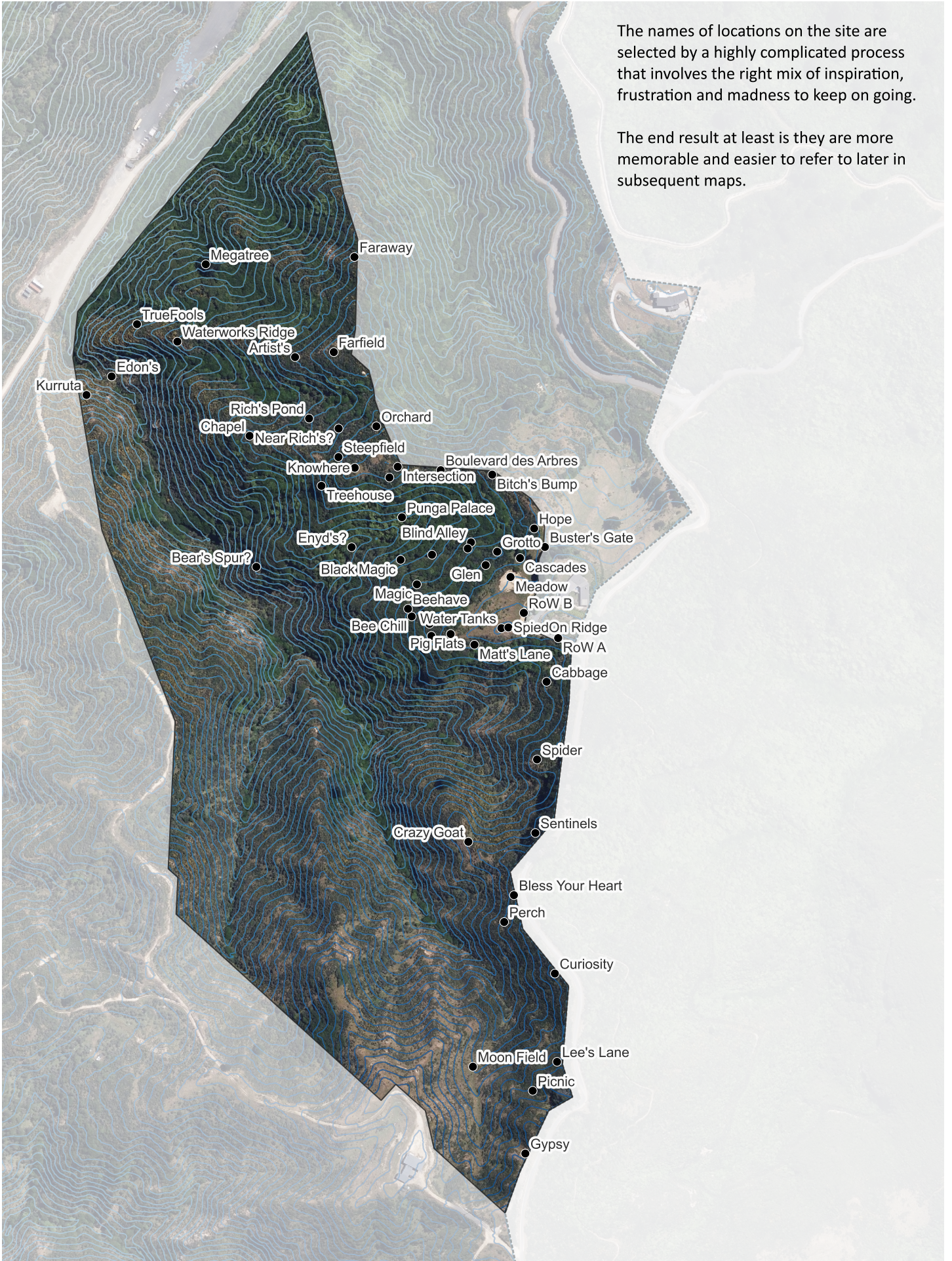


0 50 100 m



# Long Gully

## Names of Locations on Property



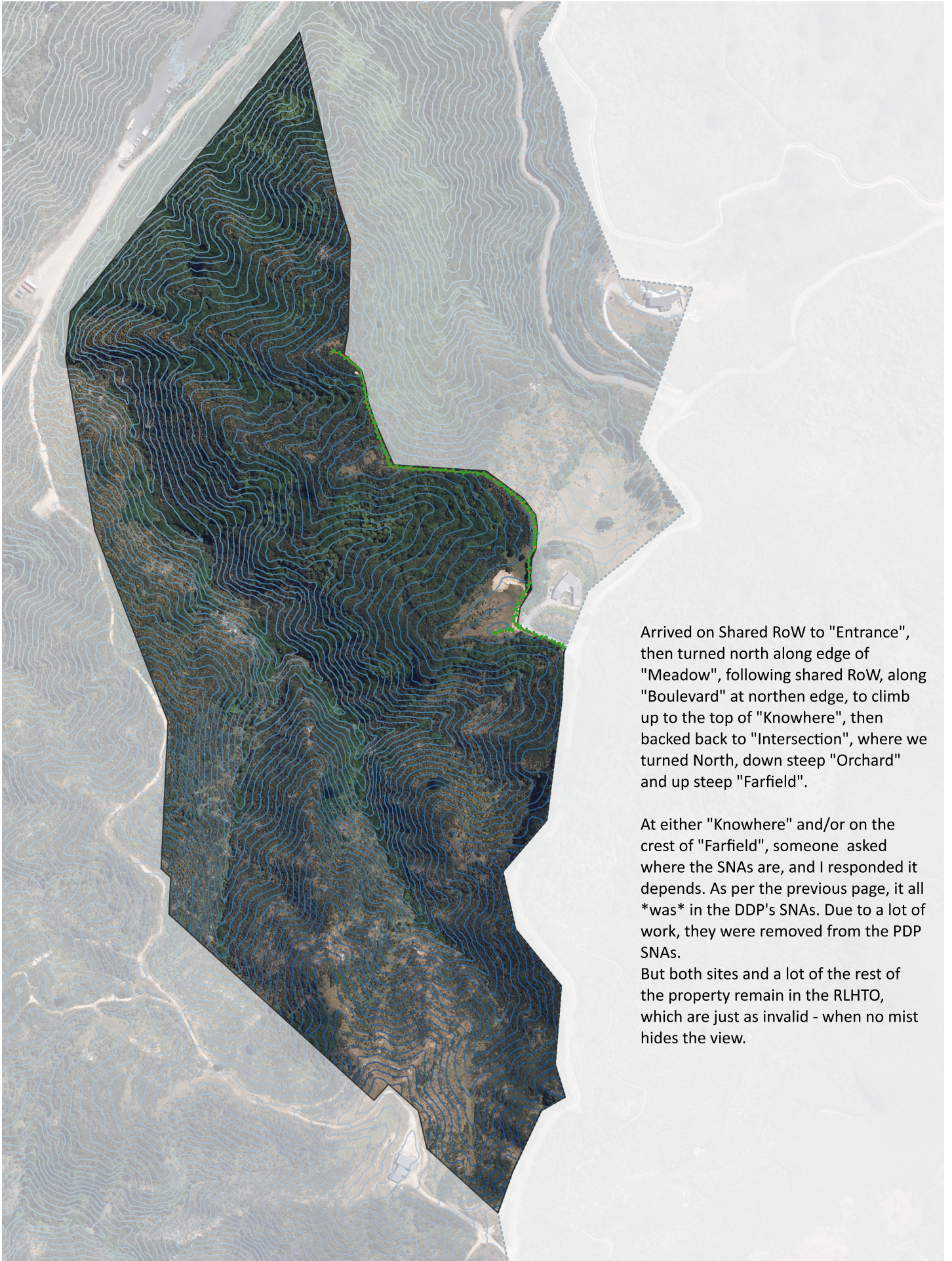


0 50 100 m



# Long Gully

06/11/2024 Commissioners Recon Route



Arrived on Shared RoW to "Entrance", then turned north along edge of "Meadow", following shared RoW, along "Boulevard" at northern edge, to climb up to the top of "Knowhere", then backed back to "Intersection", where we turned North, down steep "Orchard" and up steep "Farfield".

At either "Knowhere" and/or on the crest of "Farfield", someone asked where the SNAs are, and I responded it depends. As per the previous page, it all *\*was\** in the DDP's SNAs. Due to a lot of work, they were removed from the PDP SNAs.

But both sites and a lot of the rest of the property remain in the RLHTO, which are just as invalid - when no mist hides the view.