

# Hearing Stream 1 – Strategic Direction

Visuals of Matt Heale  
on behalf of Kāinga Ora – Homes and Communities

23 February 2023

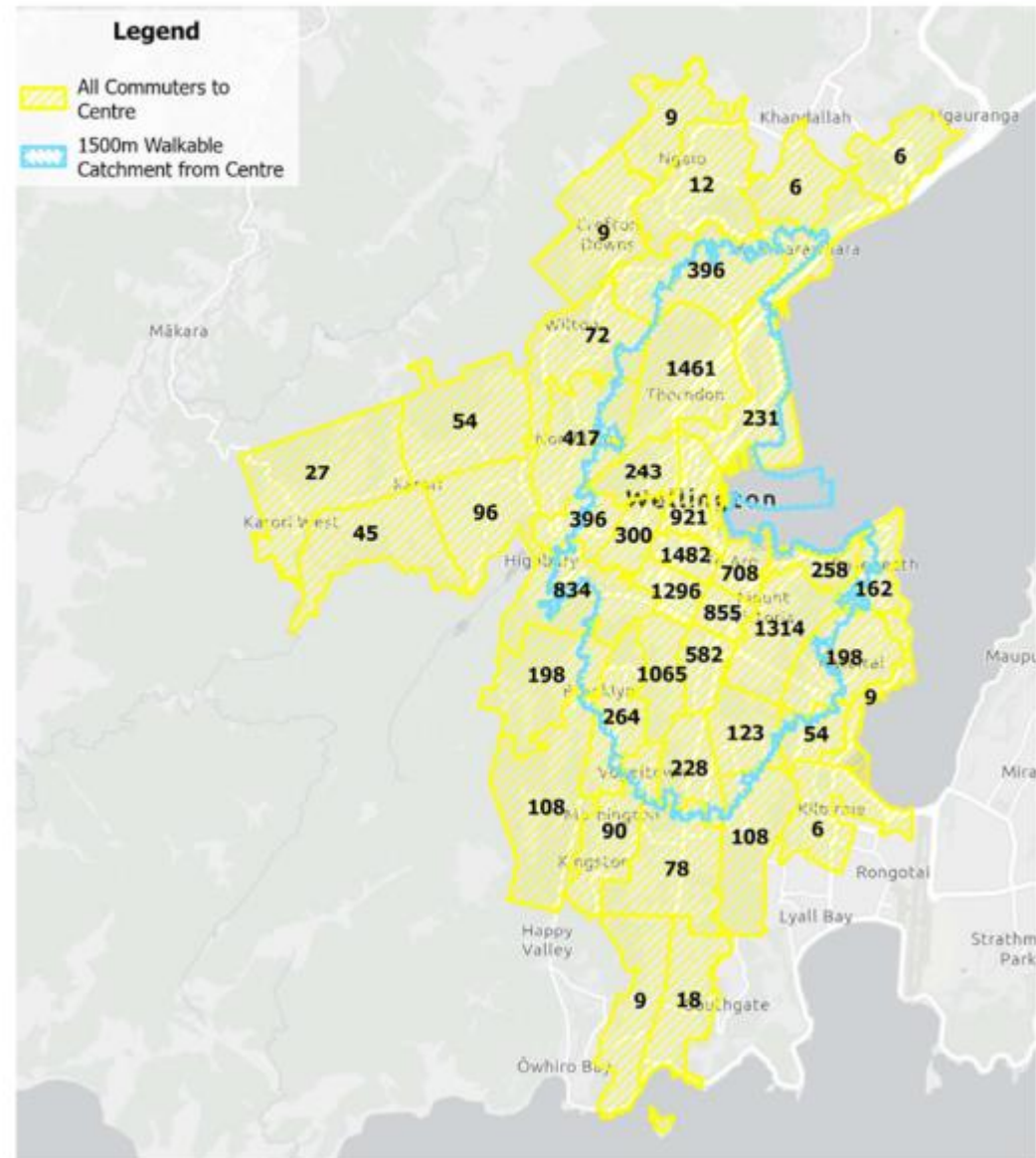


**Table 2: Key features and differences between the Town Centre and Local Centre zones**

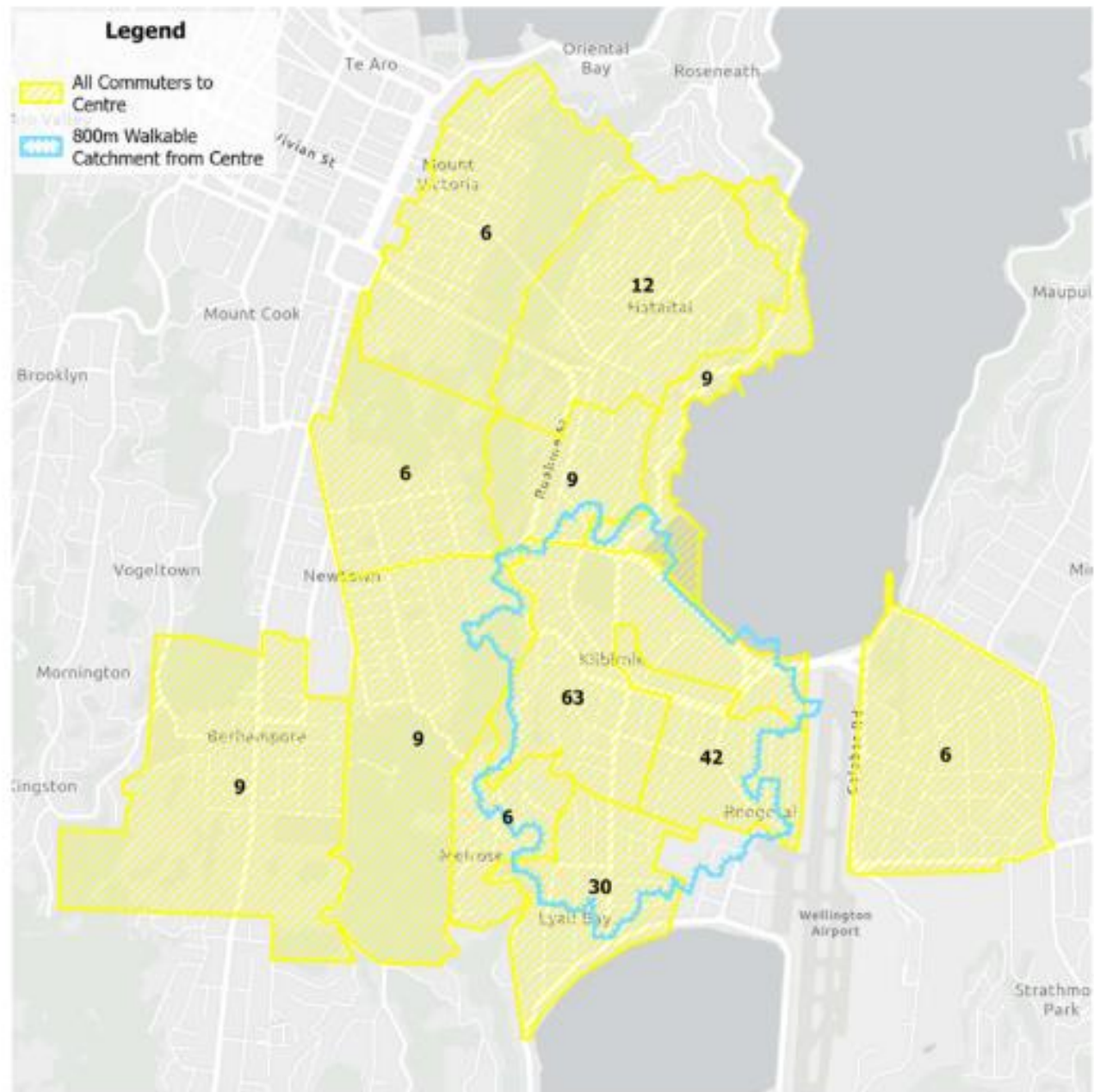
|                    | Town Centre   | Local Centre  |
|--------------------|---|---|
| Enabled activities | <ul style="list-style-type: none"> <li>• A range of commercial, community, recreational, residential and entertainment activities.</li> <li>• Entertainment activities</li> <li>• Can include tourist, cultural and civic services, large scale commercial activities.</li> </ul> | <ul style="list-style-type: none"> <li>• A range of commercial and community activities</li> <li>• Can include local retail, small scale commercial services, offices, food and beverage, appropriate scaled supermarkets.</li> </ul> |
| Service function   | <ul style="list-style-type: none"> <li>• Immediate and neighbouring suburbs</li> <li>• To meet the community's social and economic needs</li> </ul>   | <ul style="list-style-type: none"> <li>• Surrounding residential catchment</li> <li>• To meet more localised needs.</li> </ul>  |
| Transportation     | <ul style="list-style-type: none"> <li>• Main arterial access</li> <li>• Good Rapid Transit / Public Transport connections</li> <li>• Active Transport modes provided for.</li> </ul>   | <ul style="list-style-type: none"> <li>• Local roading access</li> <li>• Public Transport access</li> </ul>   |
| Density support    | <ul style="list-style-type: none"> <li>• High Density Residential</li> </ul>  | <ul style="list-style-type: none"> <li>• Medium Density Residential</li> </ul>  |

## Appendix 2– Journey to Work (Walking)

### City Centre



## Kilbirnie – Metropolitan Centre

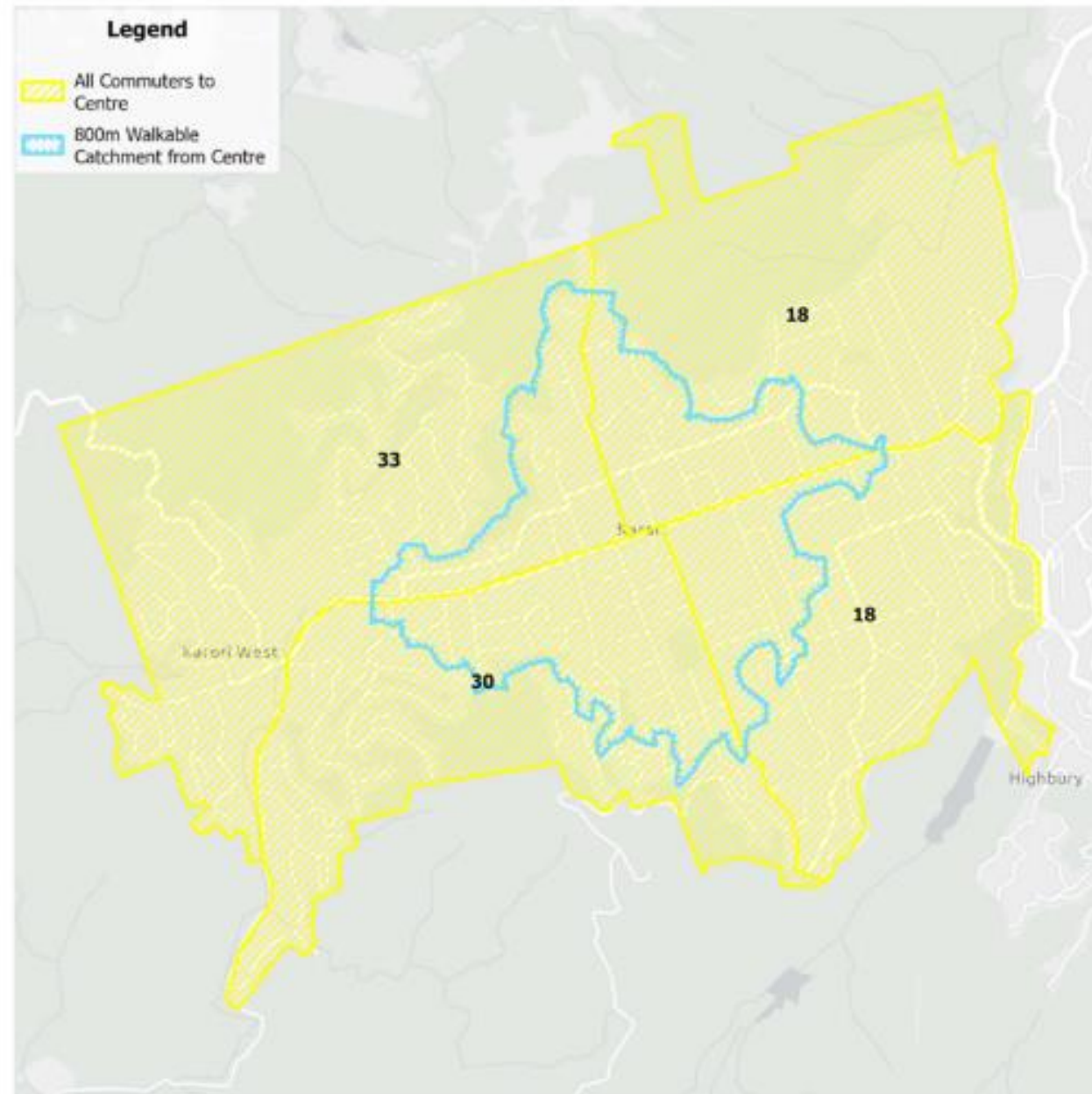




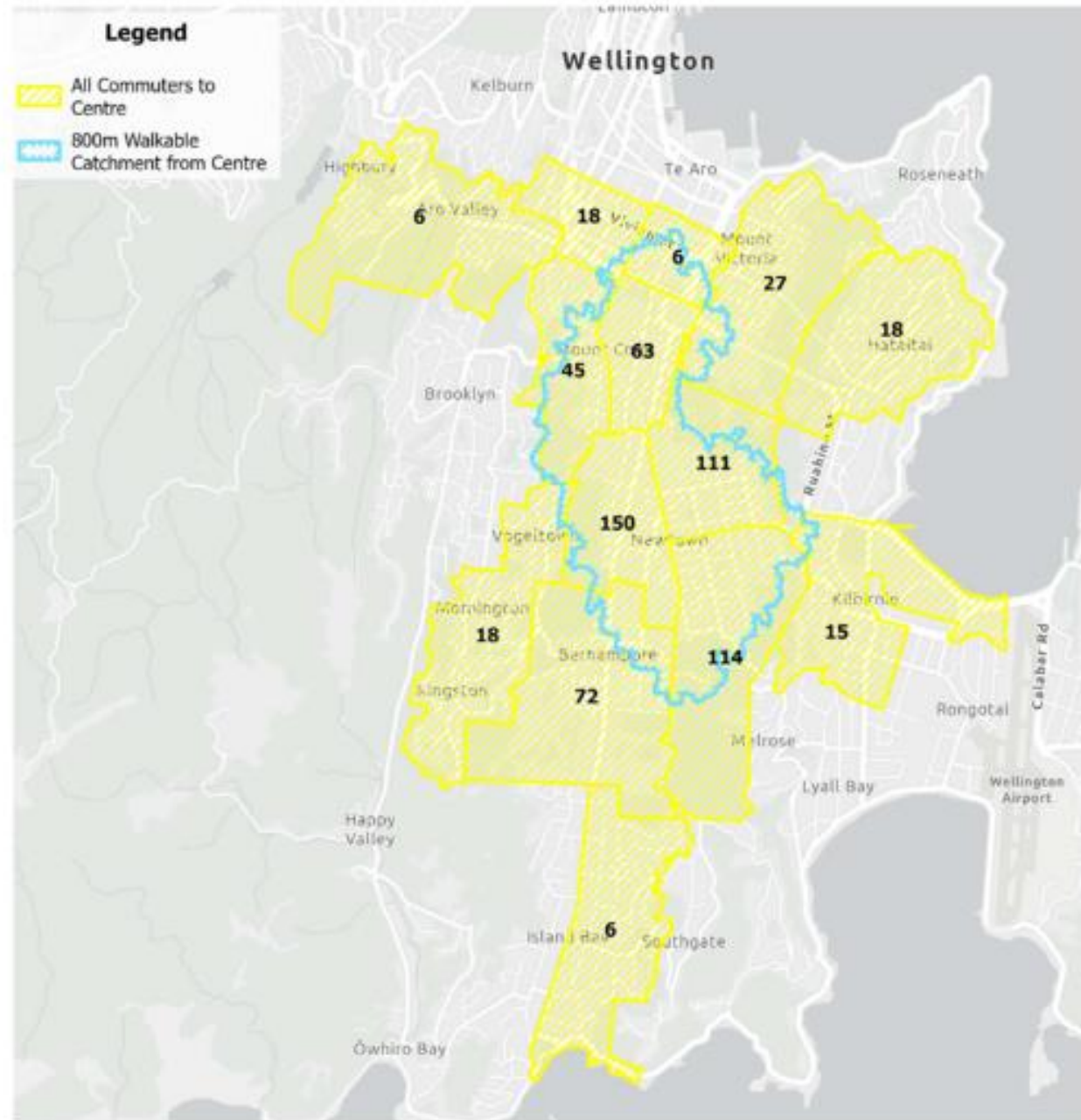
# Miramar – Town Centre



## Karori – Local Centre

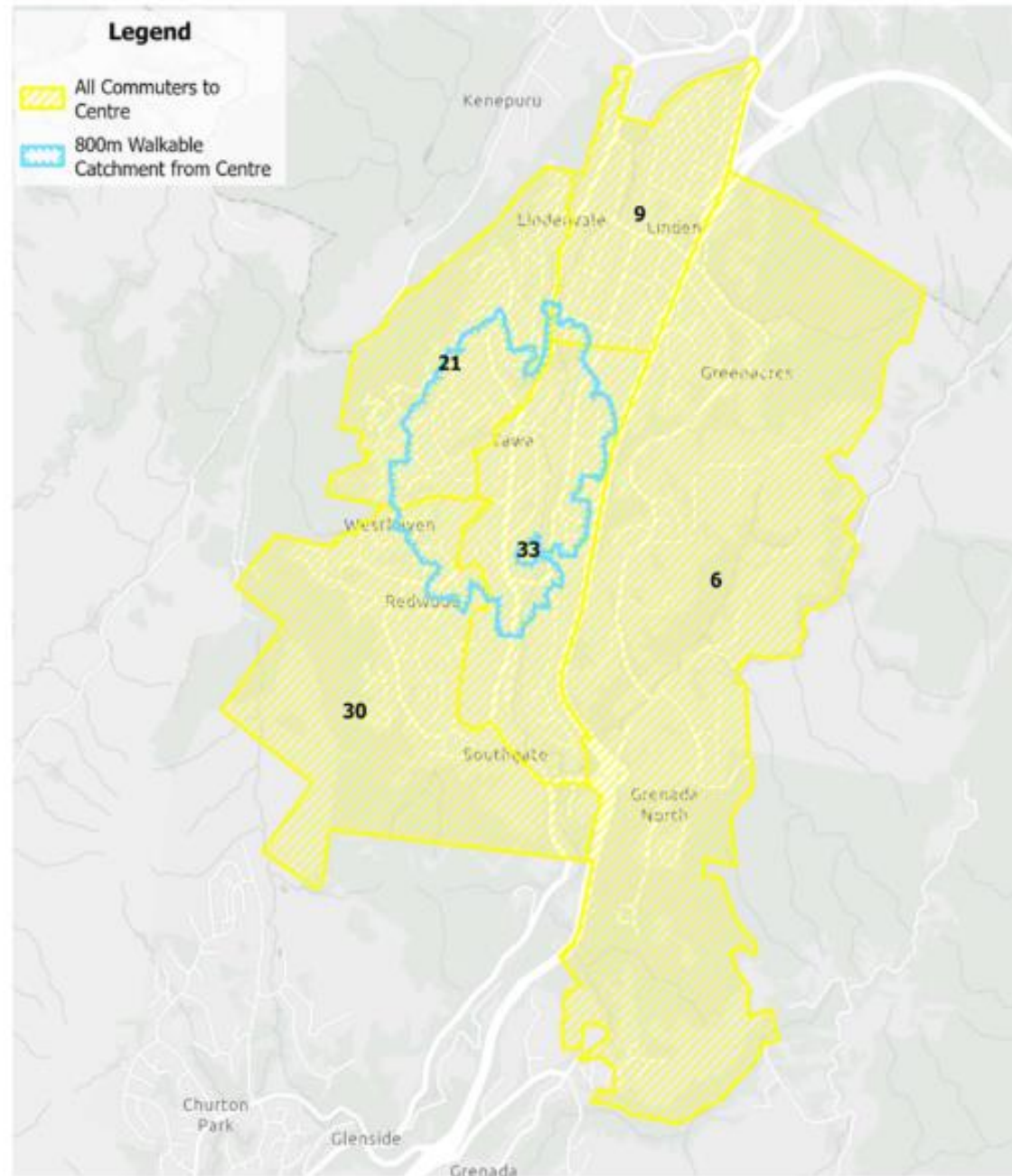


# Newtown – Town Centre

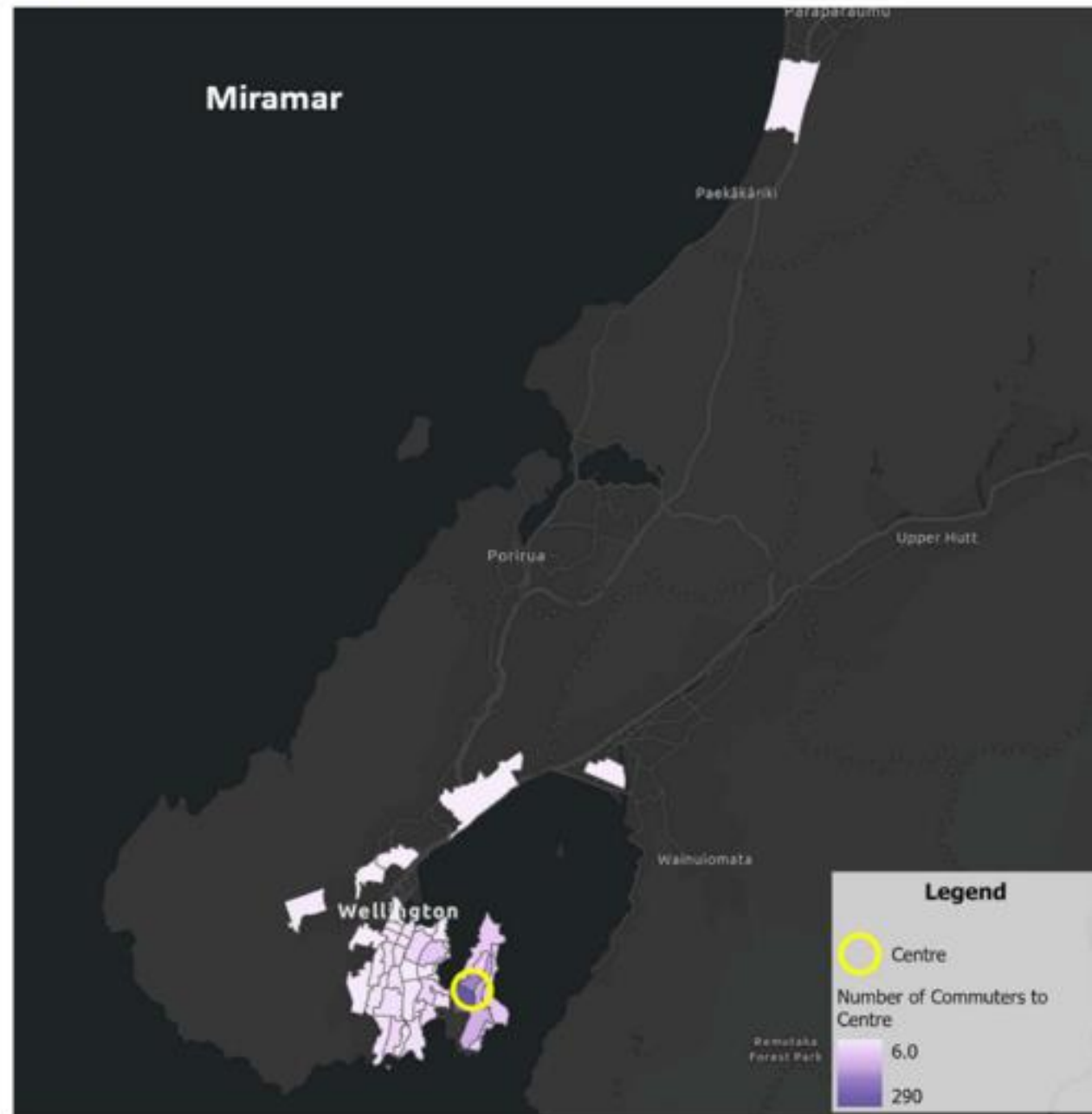




## Tawa – Town Centre



## Appendix 4 – Journey To Work (all Modes)



# Newtown

