

Colonial Knob

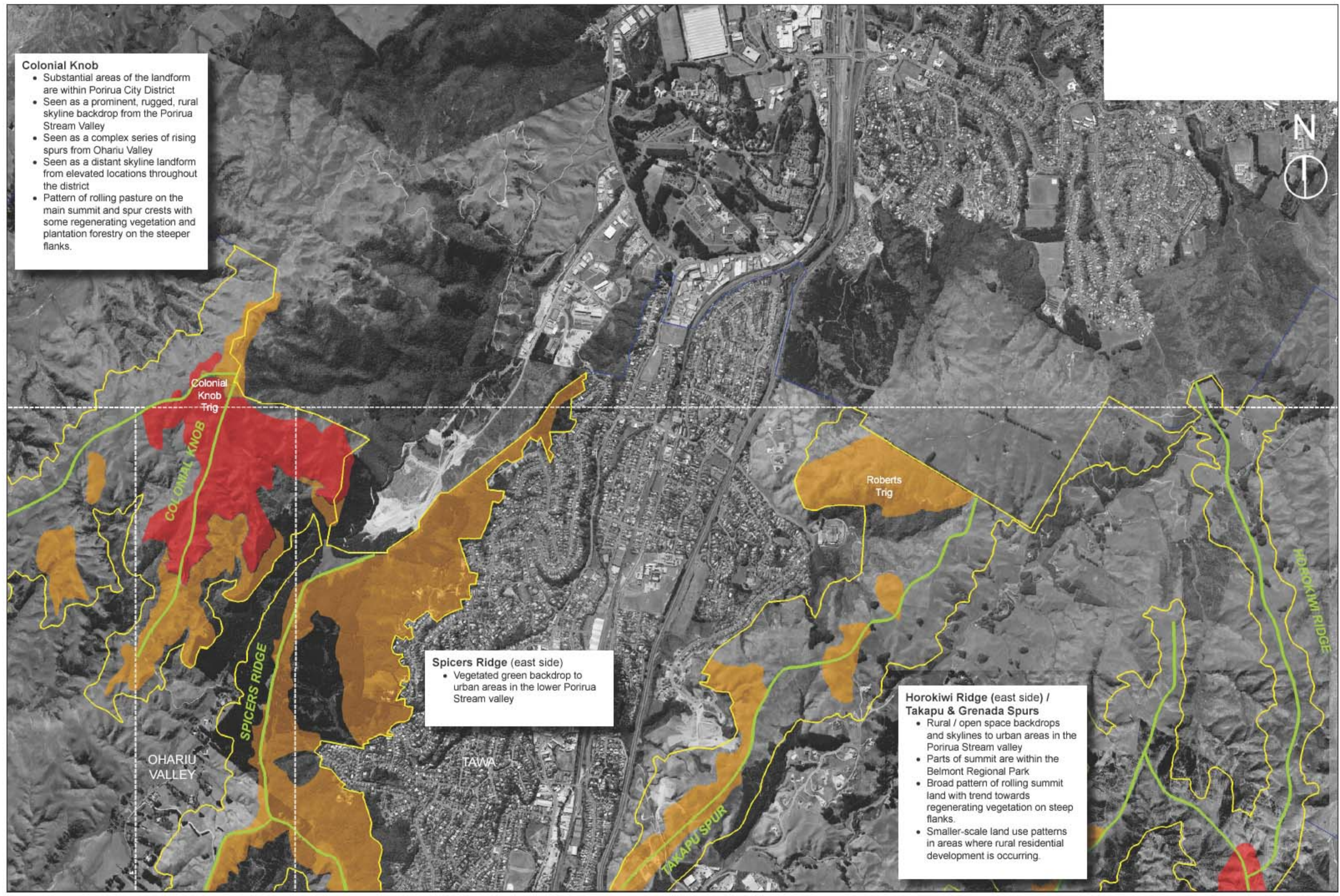
- Substantial areas of the landform are within Porirua City District
- Seen as a prominent, rugged, rural skyline backdrop from the Porirua Stream Valley
- Seen as a complex series of rising spurs from Ohariu Valley
- Seen as a distant skyline landform from elevated locations throughout the district
- Pattern of rolling pasture on the main summit and spur crests with some regenerating vegetation and plantation forestry on the steeper flanks.

Spicers Ridge (east side)

- Vegetated green backdrop to urban areas in the lower Porirua Stream valley

Horokiwi Ridge (east side) / Takapu & Grenada Spurs

- Rural / open space backdrops and skylines to urban areas in the Porirua Stream valley
- Parts of summit are within the Belmont Regional Park
- Broad pattern of rolling summit land with trend towards regenerating vegetation on steep flanks.
- Smaller-scale land use patterns in areas where rural residential development is occurring.



WELLINGTON CITY COUNCIL RIDGELINES AND HILLTOPS