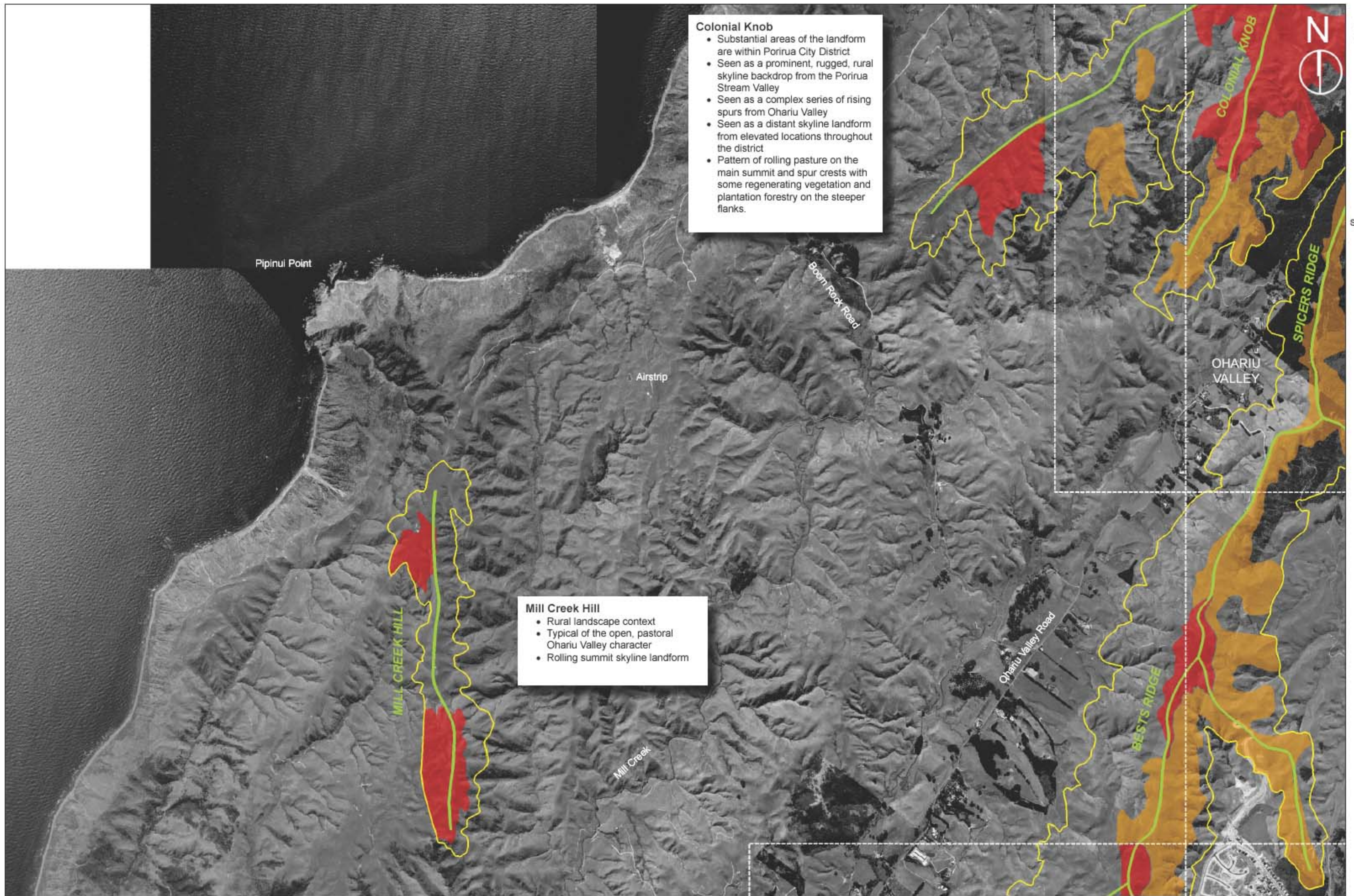




Scale 1:20000



Colonial Knob

- Substantial areas of the landform are within Porirua City District
- Seen as a prominent, rugged, rural skyline backdrop from the Porirua Stream Valley
- Seen as a complex series of rising spurs from Ohariu Valley
- Seen as a distant skyline landform from elevated locations throughout the district
- Pattern of rolling pasture on the main summit and spur crests with some regenerating vegetation and plantation forestry on the steeper flanks.

Mill Creek Hill

- Rural landscape context
- Typical of the open, pastoral Ohariu Valley character
- Rolling summit skyline landform



WELLINGTON CITY COUNCIL RIDGELINES AND HILLTOPS