



Wellington City Council

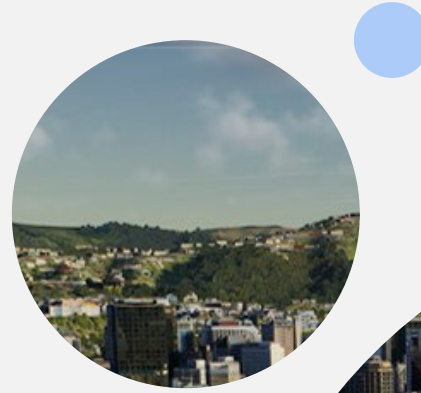
# District Plan Work Programme

10 September 2024

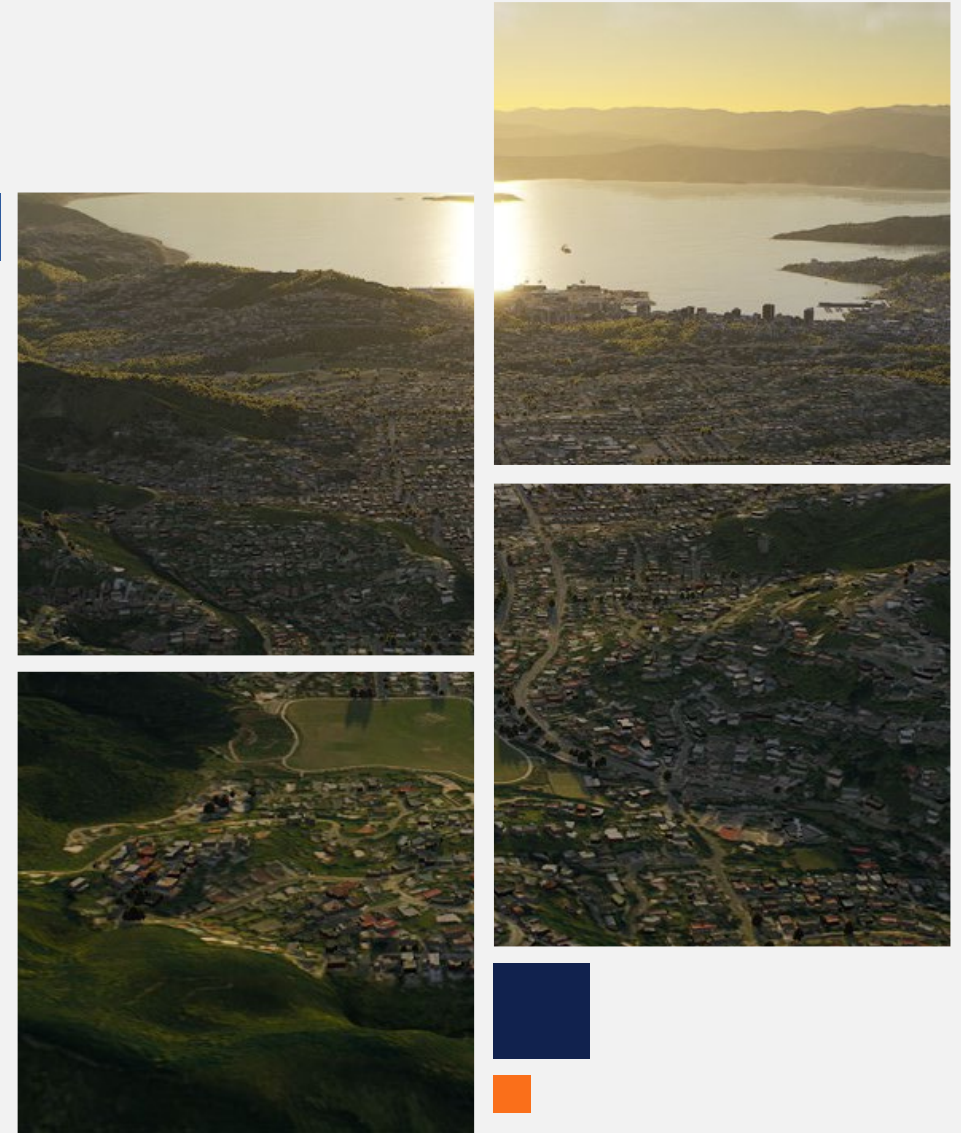
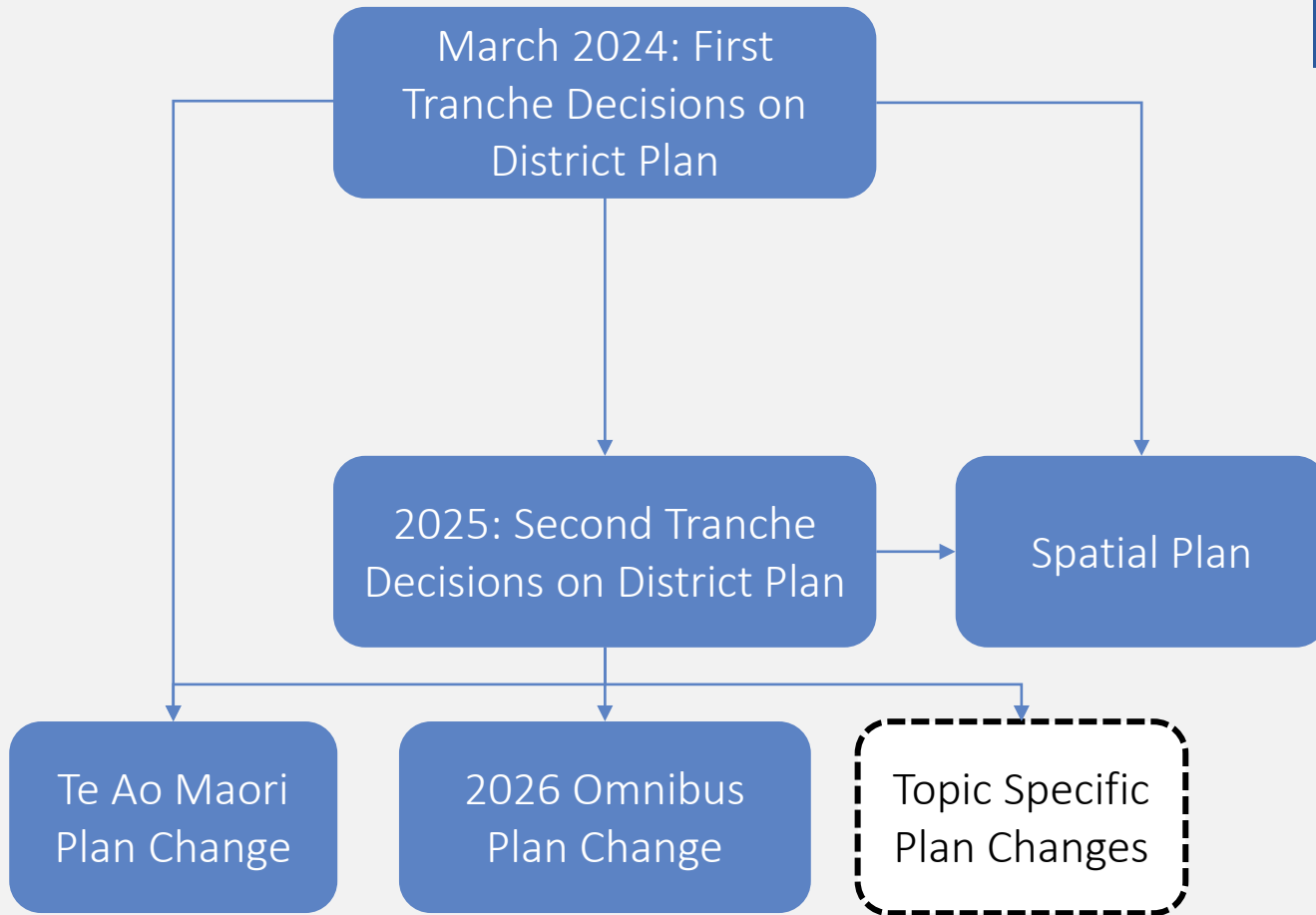
Sean Audain

# Agenda

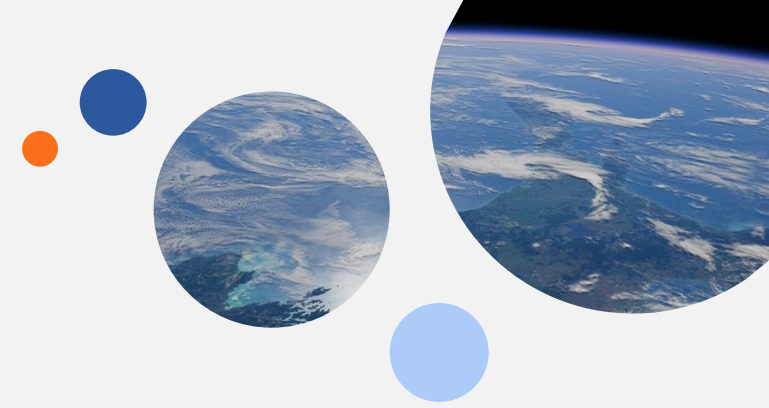
- Process
- Recommendations
- Questions



# Process



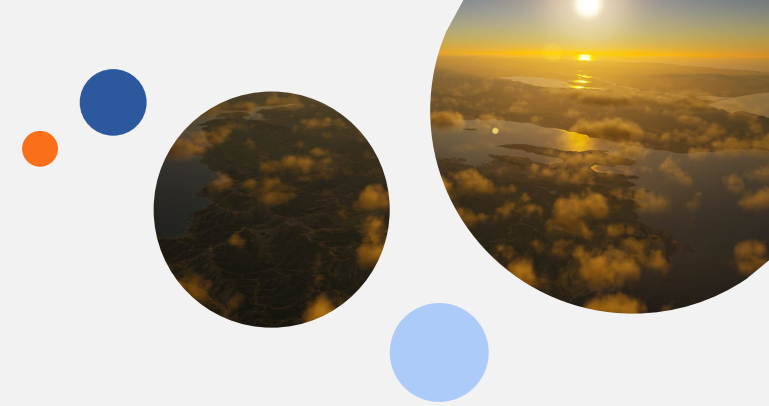
# General Recommendations



That the Kōrau Tūāpapa | Environment and Infrastructure Committee:

1. **Receive** the information.
2. **Note** the remainder of the District Plan progressing under the Part One Schedule One provisions of the Resource Management Act continues through hearings processes until mid November before being reported to the Council in mid 2025.
3. **Note** that complex topic-based issues or chapter review issues will need to be addressed through separate plan change processes.

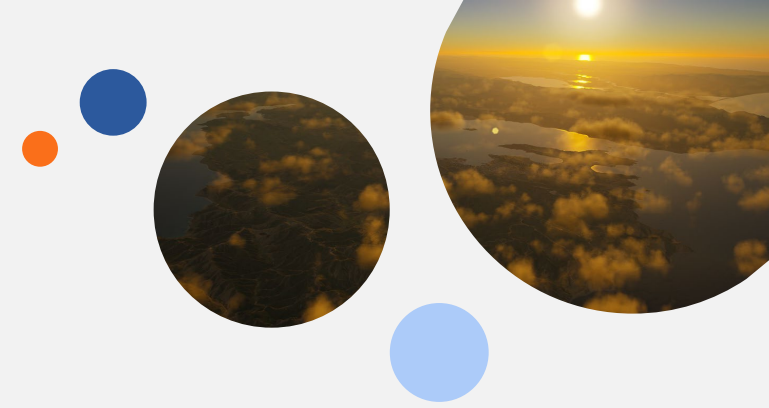
# Omnibus Plan Change



That the Kōrau Tūāpapa | Environment and Infrastructure Committee:

4. **Note** that the content for inclusion in the Omnibus will be clarified once decisions on Tranche 2 of the PDP are made in mid-2025.
5. **Note** that the scope of content for inclusion in the Omnibus Plan change will address discrete, technical changes that cannot be resolved through either clause 16 or 20A.

# Omnibus Plan Change



Out of Scope Matters:

To include these matters in an Omnibus Plan Change Councillors will need to make an amendment

The scope of an Omnibus Plan Change will return to the Council in 2025/2026 once the second tranche decisions are made.

After the second tranche decisions are taken thematic plan changes can also be considered by the Council.

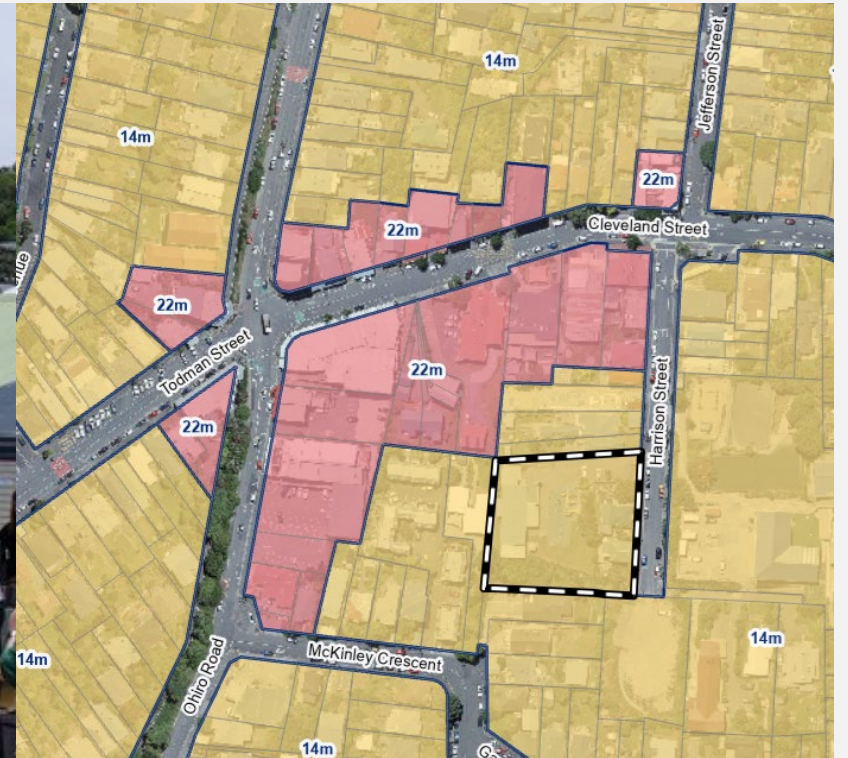
# Rezoning of Brooklyn Community Centre land

That the Kōrau Tūāpapa | Environment and Infrastructure Committee:

6. **Directs** officers to include the rezoning of the Brooklyn Community Centre from Medium Density Residential Zone to Open Space Zone as part of the upcoming Omnibus Plan Change.

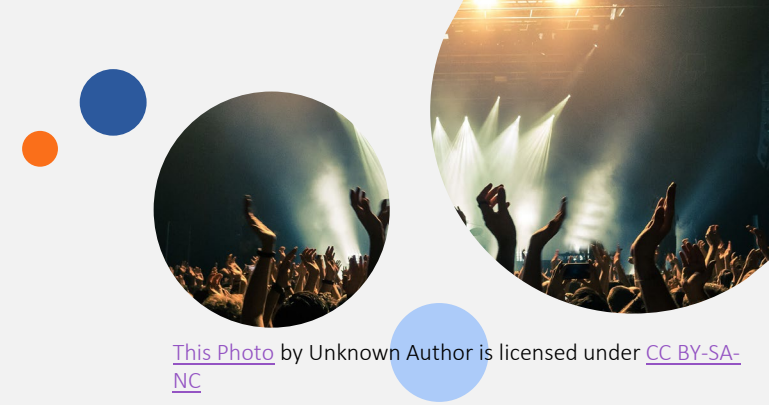


# Rezoning of Brooklyn Community Centre land





# Noise From Music Venues



[This Photo](#) by Unknown Author is licensed under [CC BY-SA-NC](#)

That the Kōrau Tūāpapa | Environment and Infrastructure Committee:

7. **Note** there are limited opportunities to resolve reverse-sensitivity risks for music venues.
8. **Directs** officers to consider any clarification or minor alterations to the District Plan to enable music venues to operate, while avoiding unreasonable noise exposure to city centre residents within the Omnibus Plan Change
9. **Directs** officers to investigate non-regulatory methods to manage music venue noise and avoid unreasonable exposure to noise from city centre residents.

# Noise from broadcasted calls to prayer

That the Kōrau Tūāpapa | Environment and Infrastructure Committee:

10. **Note** that the Kilbirnie Mosque has requested to broadcast calls to prayer three times per year and this is permitted in the 2024 District Plan as a temporary activity.

The times are:

- On the Anniversary of the Christchurch Attacks (March 15th)
- Once during the Festival of Eid al-Adha (varies as is calculated through the lunar calendar)
- Once during the Festival of Eid al-Fitr (varies as is calculated through the lunar calendar)



# Te Ao Māori plan change



That the Kōrau Tūāpapa | Environment and Infrastructure Committee:

11. **Note** that the preparation of this plan change has commenced.
12. **Directs** that officers report back to the Kōrau Tūāpapa | Environment and Infrastructure Committee on the full scope and process for the Te Ao Māori Plan Change in early 2025.

# Route Protection for Mass Rapid Transit



That the Kōrau Tūāpapa | Environment and Infrastructure Committee:

13. **Note** officers' advice that a notice of requirement for a full designation to protect a future mass rapid transit route, stations and depot from Wellington Railway Station to Island Bay is not presently feasible.

# Route Protection for Mass Rapid Transit

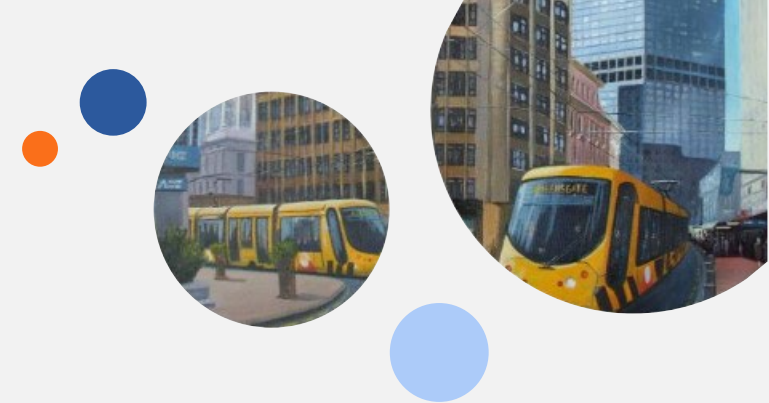


That the Kōrau Tūāpapa | Environment and Infrastructure Committee:

14. **Direct** that an investigation of ways to protect space for future mass rapid transit construction from the Basin Reserve to Newtown School be included in the scope of a Wellington City Transport Plan, including:

- a. A recommendation whether or not to reinstate a notice of requirement to widen parts of Adelaide Road and Riddiford Street between Rugby Street (Basin Reserve) and Mein Street, similar to the previous 1996 District Plan designation #75, or a similar notice of requirement to provide road space for a future mass rapid transit route and stations in this area
- b. Overall scope and timeframes of a potential designation
- c. The public works for which designated land would be used, as well as its function to preserve access for mass rapid transit in the long-term
- d. Indicative budgets to prepare and process the notice of requirement, and for long-term property acquisition and medium-term public works
- e. The process for consultation with landowners, affected parties, mana whenua partners and the community

# Route Protection for Mass Rapid Transit



# Route Protection for Mass Rapid Transit

A notice of requirement application, and when it becomes a designation, would stop the property owners from doing any development that would prevent or hinder a project (future MRT, or related public work) being built.

They would need permission from the Council first. Property owners under the designation can ask the Council to buy their land. If not agreed voluntarily, they can apply to the Environment Court for the Council to buy or lease all or part of the land.

Designations are considered in order – with the oldest designation having precedence when they overlap.



# Route Protection for Mass Rapid Transit



That the Kōrau Tūāpapa | Environment and Infrastructure Committee:

15. **Note** that any notice of requirement within the John Street Intersection Heritage Area would require a Council plan and conditions to ensure that changes to buildings within the Heritage Area retain their identified heritage values.

16. **Instructs** Officers to include support of a designation process that allows for route protection separate from infrastructure construction in the drafts of submissions made as part of the upcoming Phase Three of Resource Management Reform.



# Spatial Plan Update



That the Kōrau Tūāpapa | Environment and Infrastructure Committee:

17. **Note** the passage of the 2024 District Plan since the approval of the 2021 Spatial Plan 18. Approve the Strategic Planning Business Unit to progress work on a Spatial Plan Update focussed on understanding and co-ordinating infrastructure and water sensitive design requirements for growth for the next 30 years.

19. **Programme** a workshop on the Spatial Plan Update to:

- a. Provide background on the 2021 Spatial Plan, key changes that have occurred since this was approved, and the need for an update.
- b. Report back on progress on the Action Plan for the 2021 Spatial Plan.
- c. Signal direction of likely changes to the Spatial Plan as part of its update.

# Questions

