

**ORDINARY MEETING  
OF  
WELLINGTON CITY COUNCIL  
AGENDA**

**Time:** 9:30am  
**Date:** Wednesday, 26 May 2021  
**Venue:** Ngake (16.09)  
Level 16, Tahiwī  
113 The Terrace  
Wellington

---

**MEMBERSHIP**

Mayor Foster (Chair)  
Deputy Mayor Free (Deputy Chair)  
Councillor Calvert  
Councillor Condie  
Councillor Day  
Councillor Fitzsimons  
Councillor Foon  
Councillor Matthews  
Councillor O'Neill  
Councillor Pannett  
Councillor Paul  
Councillor Rush  
Councillor Sparrow  
Councillor Woolf  
Councillor Young

**Have your say!**

*You can make a short presentation to the Councillors at this meeting. Please let us know by noon the working day before the meeting. You can do this either by phoning 04-803-8334, emailing [public.participation@wcc.govt.nz](mailto:public.participation@wcc.govt.nz) or writing to Democracy Services, Wellington City Council, PO Box 2199, Wellington, giving your name, phone number, and the issue you would like to talk about. All Council and committee meetings are livestreamed on our YouTube page. This includes any public participation at the meeting.*

---



---

## **TABLE OF CONTENTS**

### **26 MAY 2021**

---

<b>Business</b>	<b>Page No.</b>
<b>1. Meeting Conduct</b>	<b>5</b>
<b>1.1 Karakia</b>	<b>5</b>
<b>1.2 Apologies</b>	<b>5</b>
<b>1.3 Announcements by the Mayor</b>	<b>5</b>
<b>1.4 Conflict of Interest Declarations</b>	<b>5</b>
<b>1.5 Confirmation of Minutes</b>	<b>5</b>
<b>1.6 Items not on the Agenda</b>	<b>6</b>
<b>1.7 Public Participation</b>	<b>6</b>
<b>2. General Business</b>	
<b>Nil</b>	
<b>3. Committee Reports</b>	<b>7</b>
<b>3.1 Report of the Regulatory Processes Committee Meeting         of 18 May 2021</b>	<b>7</b>
<b>4. Public Excluded</b>	<b>31</b>
<b>4.1 Appointments to Council Controlled Organisations</b>	<b>33</b>





---

## 1. Meeting Conduct

---

### 1.1 Karakia

The Chairperson will open the meeting with a karakia.

<b>Whakataka te hau ki te uru,</b>	Cease oh winds of the west
<b>Whakataka te hau ki te tonga.</b>	and of the south
<b>Kia mākinakina ki uta,</b>	Let the bracing breezes flow,
<b>Kia mātaratara ki tai.</b>	over the land and the sea.
<b>E hī ake ana te atākura.</b>	Let the red-tipped dawn come
<b>He tio, he huka, he hauhū.</b>	with a sharpened edge, a touch of frost,
<b>Tihei Mauri Ora!</b>	a promise of a glorious day

At the appropriate time, the following karakia will be read to close the meeting.

<b>Unuhia, unuhia, unuhia ki te uru tapu nui</b>	Draw on, draw on
<b>Kia wātea, kia māmā, te ngākau, te tinana,</b>	Draw on the supreme sacredness
<b>te wairua</b>	To clear, to free the heart, the body
<b>I te ara takatū</b>	and the spirit of mankind
<b>Koia rā e Rongo, whakairia ake ki runga</b>	Oh Rongo, above (symbol of peace)
<b>Kia wātea, kia wātea</b>	Let this all be done in unity
<b>Āe rā, kua wātea!</b>	

### 1.2 Apologies

The Chairperson invites notice from members of:

1. Leave of absence for future meetings of the Wellington City Council; or
2. Apologies, including apologies for lateness and early departure from the meeting, where leave of absence has not previously been granted.

### 1.3 Announcements by the Mayor

### 1.4 Conflict of Interest Declarations

Members are reminded of the need to be vigilant to stand aside from decision making when a conflict arises between their role as a member and any private or other external interest they might have.

### 1.5 Confirmation of Minutes

The minutes of the meeting held on 13 May 2021 will be put to the Council for confirmation.

## **1. 6 Items not on the Agenda**

The Chairperson will give notice of items not on the agenda as follows:

### ***Matters Requiring Urgent Attention as Determined by Resolution of the Wellington City Council***

The Chairperson shall state to the meeting.

1. The reason why the item is not on the agenda; and
2. The reason why discussion of the item cannot be delayed until a subsequent meeting.

The item may be allowed onto the agenda by resolution of the Wellington City Council.

### ***Minor Matters relating to the General Business of the Wellington City Council***

The Chairperson shall state to the meeting that the item will be discussed, but no resolution, decision, or recommendation may be made in respect of the item except to refer it to a subsequent meeting of the Wellington City Council for further discussion.

## **1. 7 Public Participation**

A maximum of 60 minutes is set aside for public participation at the commencement of any meeting of the Council or committee that is open to the public. Under Standing Order 31.2 a written, oral or electronic application to address the meeting setting forth the subject, is required to be lodged with the Chief Executive by 12.00 noon of the working day prior to the meeting concerned, and subsequently approved by the Chairperson.

---

### **3. Committee Reports**

---

---

## **REPORT OF THE REGULATORY PROCESSES COMMITTEE MEETING OF 18 MAY 2021**

---

**Members:** Mayor Foster (absent – apologies accepted), Deputy Mayor Free, Councillor Condie, Councillor Matthews, Councillor O'Neill, Councillor Sparrow (Chair), Councillor Woolf (absent – apologies accepted).

**The Regulatory Processes Committee recommends:**

**PARK, SPORT AND RECREATION TRAFFIC RESOLUTIONS**

**Recommendation/s**



That the Council:

1. Approve the following amendment to the Traffic Restrictions, pursuant to the provisions of the Wellington City Council Consolidated Bylaw 2008:
  - a. TR62 -21 Wellington Botanic Garden, Anderson Park and Bolton Street Memorial Park, Kelburn – Metered parking restriction

Website link to the Regulatory Processes Committee meeting agenda and minutes:

<https://wellington.govt.nz/your-council/meetings/committees/regulatory-processes/2021/05/18>

**Attachments**

Attachment 1. TR62-21 Wellington Botanic Garden Anderson Park and Bolton Street Memorial Park Kelburn Metered parking restriction  

Page 8

## We are proposing a change in your area

Absolutely Positively  
Wellington City Council  
Me Heke Ki Pōneke

Kia ora,

This leaflet is to let you know about a change we are proposing to make in your neighbourhood.

### Proposal:

<b>Reference</b>	TR62 -21 Wellington Botanic Garden, Anderson Park and Bolton Street Memorial Park, Kelburn – Metered parking restriction
<b>What we'd like to do</b>	<ul style="list-style-type: none"> <li>Designate 47 metered parking restrictions on the existing P120 parking spaces and the three existing mobility parking spaces in the Wellington Botanic Gardens. Metered parking restrictions will be P120, Monday to Thursday 8:00am - 6:00pm and Friday 8:00am - 8:00pm and have a fee of \$2.50 per hour weekdays.</li> </ul>
<b>Why we are proposing the change</b>	<ul style="list-style-type: none"> <li>Car parks at Wellington Botanic Garden, Anderson Park and Bolton Street Memorial Park are to cater for users of these facilities, not for general parking.</li> <li>We have monitored through surveys, observations, and complaints that non-facility users are taking up parking spaces of our customers.</li> <li>We are proposing parking restrictions at sport and recreation facilities to ensure all legitimate users can enjoy these park facilities.</li> </ul>
<b>Location – where we propose to make the change</b>	Wellington Botanic Garden, Anderson Park and Bolton Street Memorial Park, Kelburn
<b>Impact</b>	<ul style="list-style-type: none"> <li>Improves safety and accessibility for users of the park facilities at Wellington Botanic Garden, Anderson Park and Bolton Street Memorial Park.</li> <li>Net parking impact – conversion of 47 time restricted parking spaces and three mobility spaces to include a metered parking restriction between Monday to Thursday 8:00am – 6:00pm and Friday 8:00am- 8:00pm.</li> <li>Pedestrian impact – positive, will improve accessibility to local amenities.</li> </ul>
<b>How this relates to the parking policy</b>	<ul style="list-style-type: none"> <li>Prioritising parking for legitimate users of the facilities at Wellington Botanic Garden, Anderson Park and Bolton Street Memorial Park.</li> </ul>
<b>Additional Information</b>	<ul style="list-style-type: none"> <li>To view the legal description for this Traffic Resolution, an electronic copy of the report will be available on the Council's website from 9.00am Thursday 1 April 2021 at <a href="http://www.wellington.govt.nz/haveyoursay">www.wellington.govt.nz/haveyoursay</a> or you can call (04) 499 4444 and we will send one out to you.</li> </ul>
<b>Feedback</b>	<ul style="list-style-type: none"> <li>If you would like to provide us with specific feedback, you can do so by filling out an online submission form, downloading a printable submission form on <a href="http://www.wellington.govt.nz/haveyoursay">www.wellington.govt.nz/haveyoursay</a> or emailing us at <a href="mailto:tfeedback@wcc.govt.nz">tfeedback@wcc.govt.nz</a>.</li> </ul> <p>Please note if you are giving feedback the consultation period opens 9.00am Thursday 1 April 2021 and finishes 5.00pm Friday 16 April 2021.</p>

**We are proposing a change in your area**

**Absolutely Positively**  
**Wellington City Council**  
Me Heke Ki Pōneke

	<ul style="list-style-type: none"><li>• <b>What we do with your personal information:</b> All submissions (including name, but not contact details) are provided in their entirety to elected members and made available to the public at our office and on our website. Personal information (including contact details) will also be used for the administration of the consultation process including informing you of the outcome of the consultation. All information collected will be held by Wellington City Council, 113 The Terrace, Wellington, with submitters having the right to access and correct personal information.</li></ul>
<b>Next Steps</b>	<ol style="list-style-type: none"><li>1. Feedback collated by Monday 19 April 2021.</li><li>2. The proposal will go to the Regulatory Processes Committee on Tuesday 18 May 2021.</li><li>3. If approved, the proposal will be installed within the following 3 months.</li></ol>

**We are proposing a change in your area** Absolutely Positively Wellington City Council  
Me Heke Ki Pōneke

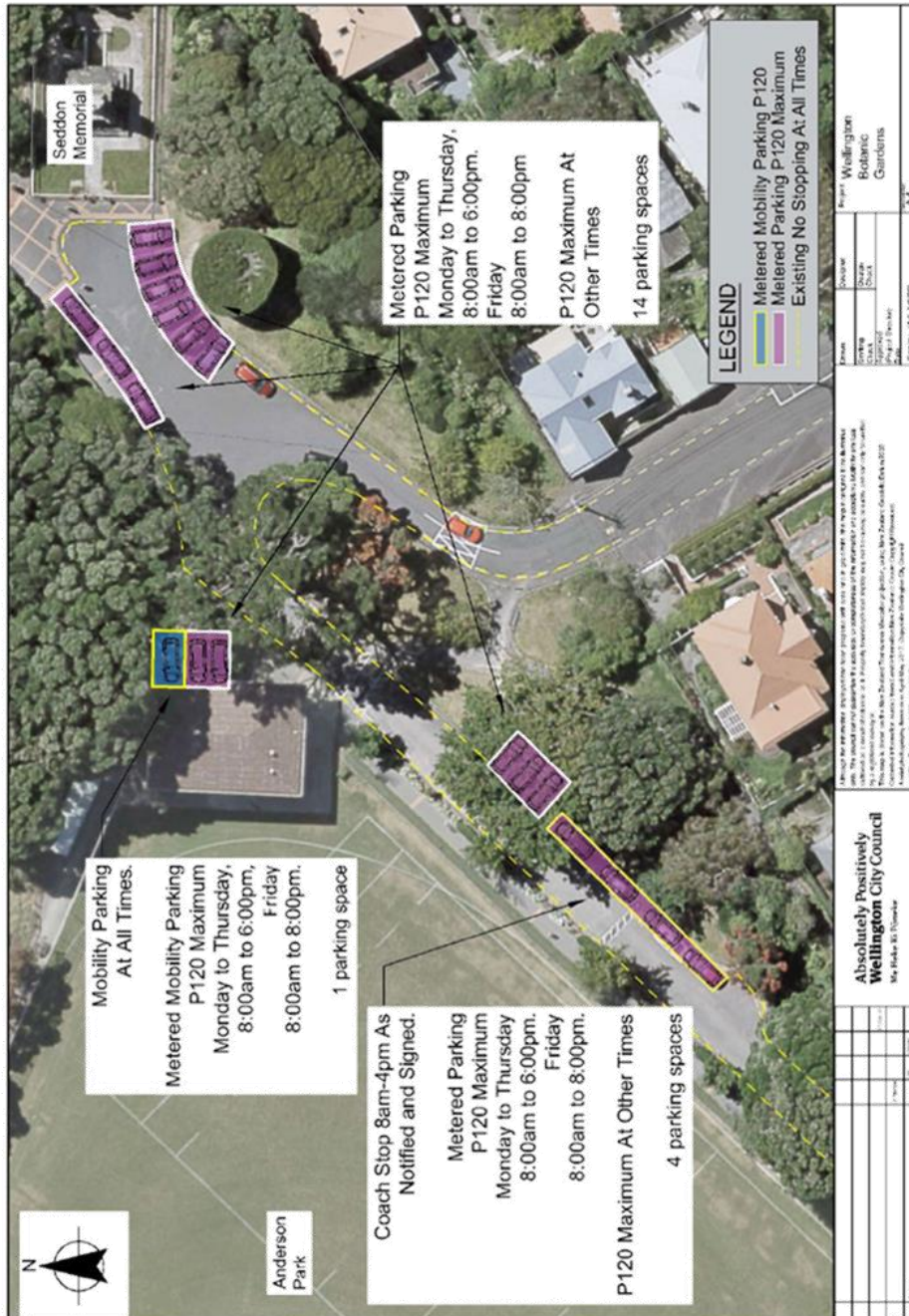
**Traffic Resolution Plan: TR62-21 Wellington Botanic Garden, Anderson Park and Bolton Street Memorial Park, Kelburn – Metered parking restriction**



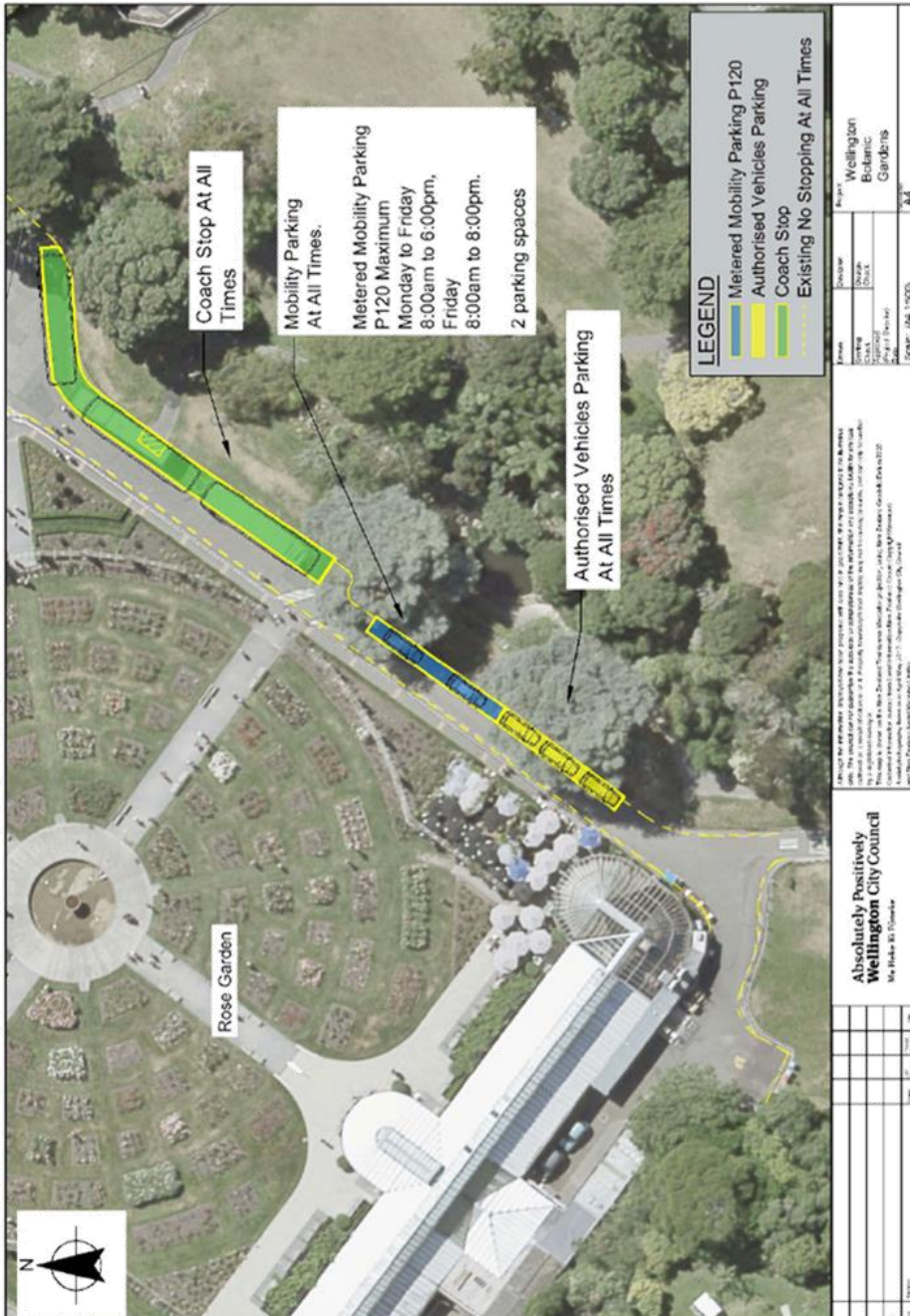


**We are proposing a change in your area**

**Absolutely Positively Wellington City Council**  
Me Heke Ki Pōneke



**We are proposing a change in your area** **Absolutely Positively  
Wellington City Council**  
Me Heke Ki Pōneke





**We are proposing a change in your area**

**Absolutely Positively**  
**Wellington City Council**  
Me Heke Ki Pōneke

**Legal Description:**

*Delete from Schedule A (Time Limited) of the Traffic Restrictions Schedule*

<b>Column One</b>	<b>Column Two</b>	<b>Column Three</b>
<b>Glenmore Street (Access Way and Car Park Near Lady Norwood Rose Garden)</b>	P120, At All Times	<i>North side, commencing 151.4 metres northeast from its intersection with Glenmore Street and Kilmister Avenue (Grid coordinates X= 1,748,031.1176 m, Y= 5,428,621.6652 m) and extending in an easterly direction following the northern kerbline for 36.0 metres (6 parallel parking spaces)</i>
<b>Glenmore Street (Access Way and Car Park Near Lady Norwood Rose Garden)</b>	P120, At All Times	<i>North side, commencing 192.4 metres northeast from its intersection with Glenmore Street and Kilmister Avenue (Grid coordinates X= 1,748,031.1176 m, Y= 5,428,621.6652 m) and extending in an easterly direction following the northern kerbline for 6.6 metres (1 parallel parking space)</i>
<b>Glenmore Street (Access Way and Car Park Near Lady Norwood Rose Garden)</b>	P120, At All Times	<i>North side, commencing 199.0 metres northeast from its intersection with Glenmore Street and Kilmister Avenue (Grid coordinates X= 1,748,031.1176 m, Y= 5,428,621.6652 m) and extending in an easterly direction following the northern kerbline for 66.2 metres (23 angled parking spaces)</i>
<b>Kinross Street (Access Way and Car Park Near Anderson Park and Lady Norwood Rose Garden)</b>	P120, At All Times	<i>East side, commencing 43.0 metres north of the northern public road boundary end of Kinross Street (Grid coordinates X= 1,748,340.9383 m, Y= 5,428,647.7696 m) and extending in a northerly direction following the eastern kerbline for 15.4 metres (6 angled parking spaces)</i>

**We are proposing a change in your area**

**Absolutely Positively**  
**Wellington City Council**  
Me Heke Ki Pōneke

<b>Kinross Street (Access Way and Car Park Near Anderson Park and Lady Norwood Rose Garden)</b>	<i>P120, At All Times</i>	<i>West side, commencing 67.1 metres north of the northern public road boundary of Kinross Street (Grid coordinates X= 1,748,340.9383 m, Y= 5,428,647.7696 m) and extending in a south-westerly direction following the western kerbline for 16.5 metres (3 parallel parking spaces)</i>
<b>Kinross Street (Access Way and Car Park Near Anderson Park and Lady Norwood Rose Garden)</b>	<i>P120, At All Times</i>	<i>East side, commencing 41.0 metres north and then 34.4 metres southwest of the northern public road boundary end of Kinross Street (Grid coordinates X= 1,748,336.9684 m, Y= 5,428,645.2548 m) and extending in a south-westerly direction following the eastern kerbline for 6.8 metres (3 angled parking spaces)</i>
<b>Kinross Street (Access Way and Car Park Near Anderson Park and Lady Norwood Rose Garden)</b>	<i>P120, At All Times</i>	<i>West side, commencing 106.1 metres of the northern public road boundary end of Kinross Street (Grid coordinates X= 1,748,340.9383 m, Y= 5,428,647.7696 m) and extending in a southerly direction following the eastern building wall for 5.0 metres (2 angled parking spaces)</i>

*Delete from Schedule B (Class Restricted) of the Traffic Restrictions Schedule*

<b>Column One</b>	<b>Column Two</b>	<b>Column Three</b>
<b>Kinross Street (Access Way and Car Park Near Anderson Park and Lady Norwood Rose Garden)</b>	<i>No stopping except for vehicles displaying an operation mobility card at all times.</i>	<i>West side, commencing 103.6 metres of the northern public road boundary end of Kinross Street (Grid coordinates X= 1,748,340.9383 m, Y= 5,428,647.7696 m) and extending in a southerly direction following the eastern building wall for 2.5 metres (1 angled parking space)</i>

**We are proposing a change in your area**

**Absolutely Positively**  
**Wellington City Council**  
Me Heke Ki Pōneke

<b>Kinross Street (Access Way and Car Park Near Anderson Park and Lady Norwood Rose Garden)</b>	<i>No stopping except for vehicles displaying an operation mobility card at all times.</i>	<i>East side, commencing 41.0 metres north and then 178.8 metres southwest of the northern public road boundary of Kinross Street (Grid coordinates X= 1,748,336.9684 m, Y= 5,428,645.2548 m) and extending in a south-westerly direction following the eastern kerbline for 15.0 metres</i>
<b>Kinross Street (Access Way and Car Park Near Anderson Park and Lady Norwood Rose Garden)</b>	<i>No stopping except for authorised vehicles only, at all times.</i>	<i>East side, commencing 41.0 metres north and then 193.8 metres southwest of the northern public road boundary end of Kinross Street (Grid coordinates X= 1,748,336.9684 m, Y= 5,428,645.2548 m) and extending in a south-westerly direction following the eastern kerbline for 15.2 metres</i>
<b>Kinross Street (Access Way and Car Park Near Anderson Park and Lady Norwood Rose Garden)</b>	<i>Coach Stop 8.00am – 4.00pm as notified and signposted, P120 at all other times for all vehicles</i>	<i>East side, commencing 41.0 metres north and then 41.2 metres southwest of the northern public road boundary end of Kinross Street (Grid coordinates X= 1,748,336.9684 m, Y= 5,428,645.2548 m) and extending in a south-westerly direction following the eastern kerbline for 26.5 metres</i>
<b>Kinross Street (Access Way and Car Park Near Anderson Park and Lady Norwood Rose Garden)</b>	<i>Bus Stop, At All Times</i>	<i>East side, commencing 41.0 metres north and then 122.9 metres southwest of the northern public road boundary end of Kinross Street (Grid coordinates X= 1,748,336.9684 m, Y= 5,428,645.2548 m) and extending in a south-westerly direction following the eastern kerbline for 48.5 metres</i>

**We are proposing a change in your area**

**Absolutely Positively**  
**Wellington City Council**  
Me Heke Ki Pōneke

*Add to Schedule F (Metered Parking) of the Traffic Restrictions Schedule*

<b>Column One</b>	<b>Column Two</b>	<b>Column Three</b>
<b>Botanic Gardens Centennial Driveway</b>	<i>Metered Parking, P120 Maximum, Monday to Thursday 8:00am – 6:00pm, Friday 8:00am-8:00pm</i>	<i>North side, commencing 151.4 metres northeast from its intersection with Glenmore Street and Kilmister Avenue (Grid coordinates X= 1,748,031.1176 m, Y= 5,428,621.6652 m) and extending in an easterly direction following the northern kerb line for 36.0 metres (6 parallel parking spaces)</i>
<b>Botanic Gardens Centennial Driveway</b>	<i>Metered Parking, P120 Maximum, Monday to Thursday 8:00am – 6:00pm, Friday 8:00am-8:00pm</i>	<i>North side, commencing 192.4 metres northeast from its intersection with Glenmore Street and Kilmister Avenue (Grid coordinates X= 1,748,031.1176 m, Y= 5,428,621.6652 m) and extending in an easterly direction following the northern kerb line for 6.6 metres (1 parallel parking space)</i>
<b>Botanic Gardens Centennial Driveway</b>	<i>Metered Parking, P120 Maximum, Monday to Thursday 8:00am – 6:00pm, Friday 8:00am-8:00pm</i>	<i>North side, commencing 199.0 metres northeast from its intersection with Glenmore Street and Kilmister Avenue (Grid coordinates X= 1,748,031.1176 m, Y= 5,428,621.6652 m) and extending in an easterly direction following the northern kerb line for 66.2 metres (23 angled parking spaces)</i>
<b>Botanic Gardens Centennial Driveway</b>	<i>Metered Parking, P120 Maximum, Monday to Thursday 8:00am – 6:00pm, Friday 8:00am-8:00pm</i>	<i>East side, commencing 43.0 metres north of the northern public road boundary end of Kinross Street (Grid coordinates X= 1,748,340.9383 m, Y= 5,428,647.7696 m) and extending in a northerly direction following the eastern kerb line for 15.4 metres (6 angled parking spaces)</i>

**We are proposing a change in your area**

**Absolutely Positively**  
**Wellington City Council**  
Me Heke Ki Pōneke

<b>Botanic Gardens Centennial Driveway</b>	<i>Metered Parking, P120 Maximum, Monday to Thursday 8:00am – 6:00pm, Friday 8:00am-8:00pm</i>	<i>West side, commencing 67.1 metres north of the northern public road boundary of Kinross Street (Grid coordinates X= 1,748,340.9383 m, Y= 5,428,647.7696 m) and extending in a south-westerly direction following the western kerb line for 16.5 metres (3 parallel parking spaces)</i>
<b>Botanic Gardens Centennial Driveway</b>	<i>Metered Parking, P120 Maximum, Monday to Thursday 8:00am – 6:00pm, Friday 8:00am-8:00pm</i>	<i>East side, commencing 41.0 metres north and then 34.4 metres southwest of the northern public road boundary end of Kinross Street (Grid coordinates X= 1,748,336.9684 m, Y= 5,428,645.2548 m) and extending in a south-westerly direction following the eastern kerb line for 6.8 metres (3 angled parking spaces)</i>
<b>Botanic Gardens Centennial Driveway</b>	<i>Metered Parking, P120 Maximum, Monday to Thursday 8:00am – 6:00pm, Friday 8:00am-8:00pm</i>	<i>West side, commencing 106.1 metres of the northern public road boundary end of Kinross Street (Grid coordinates X= 1,748,340.9383 m, Y= 5,428,647.7696 m) and extending in a southerly direction following the eastern building wall for 5.0 metres (2 angled parking spaces)</i>
<b>Botanic Gardens Centennial Driveway</b>	<i>Metered Parking, P120 Maximum, Monday to Thursday 8:00am – 6:00pm, Friday 8:00am-8:00pm</i>	<i>East side, commencing 41.0 metres north and then 41.2 metres southwest of the northern public road boundary end of Kinross Street (Grid coordinates X= 1,748,336.9684 m, Y= 5,428,645.2548 m) and extending in a south-westerly direction following the eastern kerb line for 26.5 metres (4 parallel parking space)</i>
<b>Botanic Gardens Centennial Driveway</b>	<i>Metered Mobility Parking, P120 Maximum, Monday to Thursday 8:00am –6:00pm, Friday 8:00am-8:00pm, Displaying an Operation Mobility Permit Only</i>	<i>East side, commencing 41.0 metres north and then 178.8 metres southwest of the northern public road boundary of Kinross Street (Grid coordinates X= 1,748,336.9684 m, Y= 5,428,645.2548 m) and extending in a south-westerly direction following the eastern kerb line for 15.0 metres</i>



**We are proposing a change in your area**

**Absolutely Positively**  
**Wellington City Council**  
Me Heke Ki Pōneke

<b>Botanic Gardens Centennial Driveway</b>	Metered Mobility Parking, P120 Maximum, Monday to Thursday 8:00am – 6:00pm, Friday 8:00am-8:00pm, Displaying an Operation Mobility Permit Only	West side, commencing 103.6 metres of the northern public road boundary end of Kinross Street (Grid coordinates X= 1,748,340.9383 m, Y= 5,428,647.7696 m) and extending in a southerly direction following the eastern building wall for 2.5 metres (1 angled parking space)
--	--	--

Add to Schedule A (Time Limited) of the Traffic Restrictions Schedule

Column One	Column Two	Column Three
<b>Botanic Gardens Centennial Driveway</b>	P120 Maximum, Saturday to Sunday At All Times, Monday to Thursday 12:00am – 8:00am 6:00pm – 12:00am, Friday 12:00am – 8:00am 8:00pm – 12:00am	North side, commencing 151.4 metres northeast from its intersection with Glenmore Street and Kilmister Avenue (Grid coordinates X= 1,748,031.1176 m, Y= 5,428,621.6652 m) and extending in an easterly direction following the northern kerb line for 36.0 metres (6 parallel parking spaces)
<b>Botanic Gardens Centennial Driveway</b>	P120 Maximum, Saturday to Sunday At All Times, Monday to Thursday 12:00am – 8:00am 6:00pm – 12:00am, Friday 12:00am – 8:00am 8:00pm – 12:00am	North side, commencing 192.4 metres northeast from its intersection with Glenmore Street and Kilmister Avenue (Grid coordinates X= 1,748,031.1176 m, Y= 5,428,621.6652 m) and extending in an easterly direction following the northern kerb line for 6.6 metres (1 parallel parking space)
<b>Botanic Gardens Centennial Driveway</b>	P120 Maximum, Saturday to Sunday At All Times, Monday to Thursday 12:00am – 8:00am 6:00pm – 12:00am, Friday 12:00am – 8:00am 8:00pm – 12:00am	North side, commencing 199.0 metres northeast from its intersection with Glenmore Street and Kilmister Avenue (Grid coordinates X= 1,748,031.1176 m, Y= 5,428,621.6652 m) and extending in an easterly direction following the northern kerb line for 66.2 metres (23 angled parking spaces)

**We are proposing a change in your area**

**Absolutely Positively**  
**Wellington City Council**  
Me Heke Ki Pōneke

<b>Botanic Gardens Centennial Driveway</b>	<i>P120 Maximum, Saturday to Sunday At All Times, Monday to Thursday 12:00am – 8:00am 6:00pm – 12:00am, Friday 12:00am – 8:00am 8:00pm – 12:00am</i>	<i>East side, commencing 43.0 metres north of the northern public road boundary end of Kinross Street (Grid coordinates X= 1,748,340.9383 m, Y= 5,428,647.7696 m) and extending in a northerly direction following the eastern kerb line for 15.4 metres (6 angled parking spaces)</i>
<b>Botanic Gardens Centennial Driveway</b>	<i>P120 Maximum, Saturday to Sunday At All Times, Monday to Thursday 12:00am – 8:00am 6:00pm – 12:00am, Friday 12:00am – 8:00am 8:00pm – 12:00am</i>	<i>West side, commencing 67.1 metres north of the northern public road boundary of Kinross Street (Grid coordinates X= 1,748,340.9383 m, Y= 5,428,647.7696 m) and extending in a south-westerly direction following the western kerb line for 16.5 metres (3 parallel parking spaces)</i>
<b>Botanic Gardens Centennial Driveway</b>	<i>P120 Maximum, Saturday to Sunday At All Times, Monday to Thursday 12:00am – 8:00am 6:00pm – 12:00am, Friday 12:00am – 8:00am 8:00pm – 12:00am</i>	<i>East side, commencing 41.0 metres north and then 34.4 metres southwest of the northern public road boundary end of Kinross Street (Grid coordinates X= 1,748,336.9684 m, Y= 5,428,645.2548 m) and extending in a south-westerly direction following the eastern kerb line for 6.8 metres (3 angled parking spaces)</i>
<b>Botanic Gardens Centennial Driveway</b>	<i>P120 Maximum, Saturday to Sunday At All Times, Monday to Thursday 12:00am – 8:00am 6:00pm – 12:00am, Friday 12:00am – 8:00am 8:00pm – 12:00am</i>	<i>West side, commencing 106.1 metres of the northern public road boundary end of Kinross Street (Grid coordinates X= 1,748,340.9383 m, Y= 5,428,647.7696 m) and extending in a southerly direction following the eastern building wall for 5.0 metres (2 angled parking spaces)</i>

**We are proposing a change in your area**

**Absolutely Positively**  
**Wellington City Council**  
Me Heke Ki Pōneke

<b>Botanic Gardens Centennial Driveway</b>	<i>P120 Maximum, Saturday to Sunday At All Times, Monday to Thursday 12:00am – 8:00am 6:00pm – 12:00am, Friday 12:00am – 8:00am 8:00pm – 12:00am</i>	<i>East side, commencing 41.0 metres north and then 41.2 metres southwest of the northern public road boundary end of Kinross Street (Grid coordinates X= 1,748,336.9684 m, Y= 5,428,645.2548 m) and extending in a south-westerly direction following the eastern kerb line for 26.5 metres (4 parallel parking space)</i>
--	--	---

*Add to Schedule B (Class Restricted) of the Traffic Restrictions Schedule*

<b>Column One</b>	<b>Column Two</b>	<b>Column Three</b>
<b>Botanic Gardens Centennial Driveway</b>	<i>Mobility Parking At All Times, Displaying an Operation Mobility Permit Only</i>	<i>West side, commencing 103.6 metres of the northern public road boundary end of Kinross Street (Grid coordinates X= 1,748,340.9383 m, Y= 5,428,647.7696 m) and extending in a southerly direction following the eastern building wall for 2.5 metres (1 angled parking space)</i>
<b>Botanic Gardens Centennial Driveway</b>	<i>Mobility Parking At All Times, Displaying an Operation Mobility Permit Only</i>	<i>East side, commencing 41.0 metres north and then 178.8 metres southwest of the northern public road boundary of Kinross Street (Grid coordinates X= 1,748,336.9684 m, Y= 5,428,645.2548 m) and extending in a south-westerly direction following the eastern kerb line for 15.0 metres</i>
<b>Botanic Gardens Centennial Driveway</b>	<i>Coach Stop 8.00am – 4.00pm as notified and signposted</i>	<i>East side, commencing 41.0 metres north and then 41.2 metres southwest of the northern public road boundary end of Kinross Street (Grid coordinates X= 1,748,336.9684 m, Y= 5,428,645.2548 m) and extending in a south-westerly direction following the eastern kerb line for 26.5 metres</i>



## We are proposing a change in your area

**Absolutely Positively  
Wellington City Council**  
Me Heke Ki Pōneke

<b>Botanic Gardens Centennial Driveway</b>	<i>Coach Stop, At All Times</i>	<i>East side, commencing 41.0 metres north and then 122.9 metres southwest of the northern public road boundary end of Kinross Street (Grid coordinates X= 1,748,336.9684 m, Y= 5,428,645.2548 m) and extending in a south-westerly direction following the eastern kerb line for 48.5 metres</i>
--	---------------------------------	---

**Prepared By:** Reuben Lovell-Smith (Transport Engineer Assistant)

**Approved By:** Amin Shahin (Team leader Transport Engineering)

**Date:** 3/05/2021

## FEEDBACK RECEIVED

**Absolutely Positively**  
**Wellington City Council**  
Me Heke Ki Pōneke

### Feedback Received:

**Name:** Brian Whetton  
**Suburb:** Ngaio  
**Agree:** Yes

I agree with what you are trying to achieve, but I am also wanting Wellingtonians and visitors to the gardens to have a stress-free visit. Therefore, I propose that visitors to the gardens pay \$2 or \$3 for a ticket to display on the dash of their vehicle that allows 3 hours parking from the time of issue. This should allow adequate time to view the gardens and exhibits and have a leisurely cuppa.

Best of luck

### Officer's response:

Thank you for your feedback regarding the Traffic Resolution for Wellington Botanic Garden, Anderson Park and Bolton Street Memorial Park, Kelburn.

On-Street parking is premium parking as it is highly visible and can provide easy access to nearby destinations. However, the intense competition for limited spaces means that finding a convenient parking space is not often possible.

We believe the proposed parking fees of \$2.50 per hour (fringe rate) on weekdays as well as the P120 time restriction will allow for the regular turnover of parking spaces, which is also in line with existing on-street time restrictions.

**Name:** Hilary Capon  
**Suburb:** Wellington  
**Agree:** Yes

### Officer's response:

Thank you for your feedback regarding the Traffic Resolution for Wellington Botanic Garden, Anderson Park and Bolton Street Memorial Park, Kelburn.

**Name:** Kirstin Vaa  
**Suburb:** Wellington  
**Agree:** No

### Officer's response:

Thank you for your feedback regarding the Traffic Resolution for Wellington Botanic Garden, Anderson Park and Bolton Street Memorial Park, Kelburn.

The purpose of the Traffic Resolution is to legalise the proposed parking restrictions to ensure Wellington City Council Parking Services are able to enforce illegal parking occurring as well as ensuring a regular turnover of vehicles.

## FEEDBACK RECEIVED

Absolutely Positively  
Wellington City Council  
Me Heke Ki Pōneke

**Name:** Charlotte Daniels  
**Suburb:** Wellington  
**Agree:** No

I wish to dispute the changes to parking around the university.  
I rely on this parking to go to regular Dr appointments and if parking for longer than 2 hrs was available then I'm afraid that I will not find a park to get to these appointments. I often drive as I drive for work (outside of uni) and fit my appointments in-between jobs.

These 2 hour spots are perfect for students who are doing exams, have lectures, or like I have Dr appointments. Uni life is expensive in Wellington and I don't want to be paying even more in transportation costs to get to my appointments. I do hope you reconsider as these parking spaces and their availability is crucial to students.

### Officer's response:

Thank you for your feedback regarding the Traffic Resolution for Wellington Botanic Garden, Anderson Park and Bolton Street Memorial Park, Kelburn.

On-Street parking is premium parking as it is highly visible and can provide easy access to nearby destinations. However, the intense competition for limited spaces means that finding a convenient parking space is not often possible. It is important to note, the car parks in these areas are there for the purposes of the Botanic Gardens and are not public car parks for businesses, residents or for University students.

We appreciate your concerns regarding the suitability of the current restrictions during the exam period, lectures, Doctor appointments and the financial implications for students. However, implementing metered parking is essential in providing a regular turnover of vehicles to ensure facility users are able to park at their convenience.

**Name:** Mazz Scannell  
**Suburb:** Kelburn  
**Agree:** No

I am a local resident of the area and have witnessed the parking behaviour in the specified areas in action for 30 years. I am against the proposal to implement metered parking and suggest that by using the tools that the council already has (parking wardens) the time limit would be better observed.

The proposed changes take no account of the type of person who uses the parking area for passive and recreational activity. Many who park in the diagonal parking spaces opposite the rose beds are infirm and/or elderly, they have little disposable income for parking charges and are inclined to use the spaces for short periods of time.

I know a woman who has multitude of physical ailments who drives and parks in the diagonal parks every morning to walk her small dog. The reason she chooses to park in the rose gardens is because it's the only flat ground where she can get in and out of her car.

The parking around the Begonia house is used by many elderly or infirm people. I recommend the council continues to offer free 2-hour parking spaces. This will allow many to have a quiet walk,

## FEEDBACK RECEIVED

Absolutely Positively  
Wellington City Council  
Me Heke Ki Pōneke

meet friends for coffee without penalty. Proactive management of the spaces and issuing of tickets will penalise those who take advantage of the parking area.

The metered parking spaces will also put more pressure on the surrounding streets and the resident's car parking spaces. Necessitating in more calls to the council requesting that parking wardens come and ticket the offenders.

### Officer's response:

Thank you for your feedback regarding the Traffic Resolution for Wellington Botanic Garden, Anderson Park and Bolton Street Memorial Park, Kelburn.

A Traffic Resolution was passed allowing time restricted enforcement and safety compliance in 2010 and 2018, respectively. Parking Officers have been enforcing within this area as required.

We acknowledge there are some drivers with mobility issues who do visit these areas, in 2018, additional mobility parking was created to ensure these spaces were in close proximity to Begonia.

It is important to note those who do hold mobility permits are allowed extra time on top of the P120 time restriction. The proposed change retains the current mobility parking in place, improving the accessibility for users of these facilities. The change also proposes a fringe rate parking fee of \$2.50 per hour in comparison to the current on-street parking fee of \$4.50 per hour, the parking fee will apply only during the weekday when parking is at a premium.

The P120 time restriction will remain in place during the weekend with Parking Services on-site to re-enforce the time restrictions.

**Name:** Elizabeth Fletcher  
**Suburb:** Wellington  
**Agree:** No

This does not actually address the parking issues around the Botanic Gardens and will actively disadvantage many who currently use the gardens. The problem with the parking is the taxis that park up around Anderson Park and freedom campers setting up camp for the night. The traffic wardens currently patrolling the area already pick up the commuter parking (or should do).

The parking scheme as set out will disadvantage the morning and afternoon walkers (including dog walkers). These people come in for 30-60 minutes to walk the gardens for exercise. Often, they come multiple times a week. I see the same faces on my frequent walks though the gardens. This scheme will make their frequent visits unaffordable.

It will also disadvantage the Picnic Cafe. Often the reason the car park is full on the weekends is because people are going to the Cafe.

The solution is not parking meters, but more frequent visits by the traffic wardens and heftier fines for those outstaying their welcome. Plus, the occasional evening sweep through the park to clear out the campervans

## FEEDBACK RECEIVED

Absolutely Positively  
Wellington City Council  
Me Heke Ki Pōneke

### Officer's response:

Thank you for your feedback regarding the Traffic Resolution for Wellington Botanic Garden, Anderson Park and Bolton Street Memorial Park, Kelburn.

Freedom Campers generally visit Anderson Park (as part of the Management Plan area), the Botanic Garden and Bolton Street Cemetery and are able to use the carparks provided, provided they are not exceeding the P120 time restriction or staying overnight.

The security guards who complete the lock up in these areas are asked to move Freedom Campers on if we are aware of them. We also discourage taxi drivers from parking in these areas however, their response is often that they 'are on their break' within the carparks.

Parking is available in the Coupon Parking Zones in Glenmore Street, Bolton Street and Salamanca Road where the first two hours are free.

Café customers are also visitors the Botanic Garden, and are entitled to park in accordance with the P120 restriction and the implementation of metered parking will further encourage user turnover and increased parking space availability

**Name:** Monica Franklin  
**Suburb:** Wellington  
**Agree:** No

The plan as shown is flawed, and again shows the limited knowledge of Council in this area. Paid parking with meters is such nonsense.

Many Wellingtonians value the ability to park in the Rose Gardens and enjoy conviviality one of the few places not requiring to pay to park.

The timing proposed is to park and pay until 8pm.

I have lived adjacent to this area for over 40 years and the majority of time there are plenty of parking spaces free of cars after 3pm so why this very late hour.

Another and important concern are that Anderson Park is not part of the Botanical Gardens, gifted to the children of Thorndon and environs. Pay parking is an imposition to parents who are supporting their children in the various sports and play that happen here, 100s of children at cricket practice over the summer months.....why stop folk engaging with children's sport for a few measly dollars. My own son 'lived' at Anderson Park and went onto represent both Wellington and NZ, Anderson Park must not fall to parking meters.

Turning to Tourist bus parking. Neither the road though the Rose Garden nor the egress into Kinross St and Bolton St have been made for heavy bus use. There is no reason bus cannot park on Glenmore St, discharge the passengers onto save footpaths and then either walk up the gentle slope path away or climb the steps. If unable to do either one would be inclined to feel these folks would be better placed using private vehicles.

As shown on the plan passengers alight into oncoming traffic. The Rose Gardens are foremost for the enjoyment of Wellington ratepayers who do not generally arrive by the bus load. Ridiculous



## FEEDBACK RECEIVED

**Absolutely Positively**  
**Wellington City Council**  
Me Heke Ki Pōneke

provision given to tourist bus private providers while locals are being asked to pay, what a preposterous idea.

One wonders, do the proposers even familiarise themselves with the area. There is mention of all-day parkers, I would like to see the research

To sum up this area DOES not need nor require parking meters

### Officer's response:

Thank you for your feedback regarding the Traffic Resolution for Wellington Botanic Garden, Anderson Park and Bolton Street Memorial Park, Kelburn.

We appreciate the point you raised regarding free parking spaces after 3pm however, the hours of operation stated on the Traffic Resolution is in line with current on-street hours of operation.

The proposed hours for metered parking takes into account the activities held at Anderson Park over the weekend and time restriction enforcement will remain the same.

In regard to tourist bus parking, we are aware of this anomaly and as tourism throughout the country resumes, we are having on-going discussions with tour operators to set a fee for buses using the Botanic Garden.

There are no records and at present, PSR staff have informally monitored the car parking spaces in these areas and referring long stay parkers to Parking Services to respond. Persistent long-term parkers is noticed by staff and to date we have removed two vehicles in the last year after repeated warnings.

**Name:** Angus Wilson  
**Suburb:** Hataitai  
**Agree:** No

### Officer's response:

Thank you for your feedback regarding the Traffic Resolution for Wellington Botanic Garden, Anderson Park and Bolton Street Memorial Park, Kelburn.

The purpose of the Traffic Resolution is to legalise the proposed parking restrictions to ensure Wellington City Council Parking Services are able to enforce illegal parking occurring as well as ensuring a regular turnover of vehicles.

**Name:** Mazz Scannell on behalf of Friends of the Wellington Botanic gardens  
**Suburb:** Kelburn  
**Agree:** No

On behalf of the Friends of Wellington Botanic gardens I would like to register our surprise that the council is considering metered carparking for the rose gardens and its immediate surroundings.

## FEEDBACK RECEIVED

Absolutely Positively  
Wellington City Council  
Me Heke Ki Pōneke

The proposed changes take no account of the type of person who uses the parking area for passive and recreational activity. Many who park in the diagonal parking spaces opposite the rose beds are infirm and/or elderly, they have little disposable income for parking charges and are inclined to use the spaces for short periods of time.

Currently the maximum time for parking in these spaces is 120 minutes. The Friends suggest that by using the tools that the council already has (parking wardens and ticketing) the two-hour time limit would be better observed.

### Officer's response:

Thank you for your feedback regarding the Traffic Resolution for Wellington Botanic Garden, Anderson Park and Bolton Street Memorial Park, Kelburn.

A Traffic Resolution was passed allowing time restricted enforcement and safety compliance in 2018. Parking Officers have been enforcing within this area as required.

The proposed change retains the current mobility parking in place, improving the accessibility for users of these facilities. The change also proposes a fringe rate parking fee of \$2.50 per hour in comparison to the current on-street parking fee of \$4.50 per hour, the parking fee will apply only during the weekday when parking is at a premium.

The P120 time restriction will remain in place during the weekend with Parking Services on-site to re-enforce the time restrictions.

**Name:** Catriona McBean on behalf of dsport  
**Suburb:** Wellington  
**Agree:** No

Metered parking for accessible spaces is timed the same as non-designated spaces. Those requiring the use of accessible spaces do so through necessity and due to physical limitations. Placing the same time limitation on the accessible spaces does not recognise or acknowledge the differing needs of those users and can best be described as ableist. It assumes people requiring access to these carparks are as able as those who do not, which obviously is not the case.

We would encourage extending the time for the accessible spaces to recognise and acknowledge the additional time it takes for those users to walk/wheel to/from the car park to the venue and their use of the venue which may take longer (eg, changing/toileting).

### Officer's response:

Thank you for your feedback regarding the Traffic Resolution for Wellington Botanic Garden, Anderson Park and Bolton Street Memorial Park, Kelburn.

We appreciate your concerns however; Council has recently conducted surveys which show that parking at these facilities is at 85% capacity. The P120 time restriction is in line with existing on-street time restrictions as well as with the recently adopted Parking Policy.

## FEEDBACK RECEIVED

Absolutely Positively  
Wellington City Council  
Me Heke Ki Pōneke

Currently, those who do display mobility permits allows the user to park in a Council-owned parking space for longer than the time restriction. The extra hour gives mobility users additional time to safely enter and exit their vehicle and excess time to travel to their next destination. This rule will remain in place.

With a permit, mobility users can park for:

- 1 hour over any time restriction of 30 minutes or longer
- 1 hour over the time you've paid for

We thank you for your suggestion to extend time restrictions. We will take this feedback on-board when considering any future changes.

**Name:** Elizabeth Whyte  
**Suburb:** Kelburn  
**Agree:** No

I have lived in Kinross Street for 50 years, so I am familiar with the area and ever-increasing traffic and parking problems.

I wish to object to the proposed changes in the Traffic Resolution Plan TR62-21.

If the existing parks restricted to P120 were properly monitored the non-facility users would be ticketed and discouraged to take up parks of those using the Park facilities.

Metered parks will still require monitoring so the main advantage would be the revenue collected.

I also wish to have confirmed that the Coach Stop (8am -4pm, As notified and signed) near the Cricket Pavilion will not be changed to a permanent Coach Stop.

I have spoken to Joel de Boer who assures me that this Coach Park is not being changed.

The existing Coach stops are adequate.

There are very few tourists visiting Wellington and no cruise ships so there are far less coaches entering the Park.

If the car parks near the Cricket pavilion are made a Coach park the passengers, then alight into the path of the passing traffic.

There was insufficient notification of these proposed changes.

I only knew about the resolution as I was notified by Nicola Young.

The Lady Norwood Rose garden is a beautiful oasis in the city.

It was established by the Norwood family as a place of peaceful solace for the people of Wellington. Metered car parks will not enhance this area.

Please take time to familiarise yourselves with the area before making your decision and let Wellingtonians enjoy their garden.



## FEEDBACK RECEIVED

**Absolutely Positively**  
**Wellington City Council**  
Me Heke Ki Pōneke

**Officer's response:**

Thank you for your feedback regarding the Traffic Resolution for Wellington Botanic Garden, Anderson Park and Bolton Street Memorial Park, Kelburn.

A Traffic Resolution was passed allowing time restricted enforcement and safety compliance in 2010 and 2018, respectively. Parking Officers have been enforcing within this area as required.

In relation to the Coach Stop located nearby the Cricket Pavilion, there are currently no plans to convert this to a permanent Coach Stop however, this suggestion could be raised with our Transport team.

We thank you for your suggestions, we will ensure to take these along to any further discussions that do take place.



## **4. Public Excluded**

### **Recommendation**

That the Council:

1. Pursuant to the provisions of the Local Government Official Information and Meetings Act 1987, exclude the public from the following part of the proceedings of this meeting namely:

General subject of the matter to be considered	Reasons for passing this resolution in relation to each matter	Ground(s) under section 48(1) for the passing of this resolution
4.1 Appointments to Council Controlled Organisations	7(2)(a) The withholding of the information is necessary to protect the privacy of natural persons, including that of a deceased person.	s48(1)(a) That the public conduct of this item would be likely to result in the disclosure of information for which good reason for withholding would exist under Section 7.

---

