

## Councillor Questions and Answers

### Pūroro Waihanga | Infrastructure Committee meeting of 14 October 2021

The following questions were received from Councillors regarding items on the agenda of the Pūroro Waihanga | Infrastructure Committee meeting of 14 October 2021.

#### Item 2.1 Petition - Bus Shelter Installation

**Have any officers or councillors previously been involved in providing advice to the petitioner?**

*WCC officers have not provided any advice to the petitioner directly, but staff from Greater Wellington Regional Council indicated they were going to speak to the customer.*

#### Item 3.1 Storm Event 17-18 July 2021

**When flooding is forecast, could the Council pump pipes to reduce the impact? What are the issues with this approach?**

*The stormwater system is not served by pumps (with one exception). The system comprises a series of gravity pipes, open channels and overland flow paths that provide a range of levels of service, conveying water in pipes and open channels for rain events between 1-in-5 year and 1-in-10 years. Beyond the level of service provided by pipes and open channels, the system is designed to then rely on the intended overland flow path for those higher intensity rain events. When a city starts to design a network that is reliant on pumped stormwater solutions, energy and carbon is increased and so to is the reliance on electricity continuity. By way of example, the one stormwater pump station in existence would draw more power than our mobile generators could provide.*

**Where were the surcharging manholes in this event?**

*We do not have a discrete database of locations; however there are jobs with specific locations that have informed both the immediate response and the Capital programme where the lid design requires change.*

**What are the safety concerns with surcharging manholes referred to in para 29?**

*The force of water can either dislodge or unset the lids on manholes in footways or the road – posing a physical hazard to pedestrians and road users.*

**What is the fix?**

*As outlined in the report, WWL plans to replace the gravity set manhole covers with ones that are fixed by a hinge. The hinge allows the water to surcharge and ensures the lid re-seats in the correct position.*

**Where are these manholes in the WW minor capital works programme?**

*\$50k has been earmarked in the capital programme 'Surging Manholes – Stormwater'*

**What about the impact on staff outside of the call centre?**

*Roading staff, contractors, WWL staff and BCC staff were all required to work extended hours for a short period. As outlined in the report, the event had a long tail, and many of the issues remain unresolved, especially around houses damaged due to flooding and slips.*

**How many hours did Council officers work in a row during the storm?**

*We have not kept records to that level of specificity. The safety of staff is not compromised in responding to such events. Rest breaks were built into the roster system to mitigate the secondary risks associated with fatigue. For longer chronic fatigue risks, stand-down days are added to the roster to ensure a proper break is taken.*

**What is the plan to address the impact on staff in the call centre from the spike in calls?**

*Officers are working through options with WWL as there are other Councils with similar issues in the region. The main thrust of the options is to get customer contact closer to where decisions are made and use an external contact centre for managing surge capacity.*

**What are the key lessons from this event? How will these be implemented?**

*Future messages around overland flow paths and roles and responsibilities can be more strongly communicated, along with response messaging around how to drive vehicles and behave safely around surface flooding, and also asking residents to avoid using infrastructure during intense events.*

*Climate change will increase the frequency and severity of flooding and slips. In order to mitigate flood risks in future, choices will need to be made. While some of these will no doubt involve the upgrading of infrastructure, for some areas this may not be possible or practicable. Wellingtonians are going to have to learn to live with more water, and to plan our city accordingly.*

*In some areas infrastructure will not be able to 'solve' the problem. Development in the lowest lying areas, adjacent to streams or in former lakes will increasingly be at risk.*

*More slips and floods will be part of Wellington's future. We will need to adapt our infrastructure and our expectations as this occurs with increasing frequency in the coming decades. The draft District Plan incorporates a Natural Hazards Chapter, including flood risk layers. When adopted this could help adapt the city to the new normal way of living with more water through specifying how development should occur and better stormwater management.*

*In turn this highlights the need for any future Water Services Entity under the Government's proposed reforms to be cognisant of the local planning needs of Councils and communities. Should reform proceed, a future model is likely to require greater clarity around the various roles, responsibilities, and interfaces around stormwater management.*

**Can we get some advice about the flooding in Ngaio and about any options to improve the outcomes for future weather events?**

*Flood risk analysis on Ngaio was completed in the last 12 months. The Council's Spatial Plan is the key to understanding what needs to be improved in the stormwater network to accommodate the potential increases in density. In this Long-term Plan, funding has been set aside for Wellington Water to move from the pre-feasibility constraints analysis to more detailed advice, to be tabled as part of the 2024 Long-term Plan considerations.*

**The report NIWA did to GWRC of December 2019 stated there had been no changes to rainfall trends in the GW region (Kelburn's outlier upward trend was cautioned to be viewed with scepticism, especially as the airport's trend was downward). Is this still the position of NIWA?**

*Niwa recorded this winter as the second consecutive warmest winter on record.*

*Niwa's Winter 2021 report included that above normal rainfall (120-149% of normal) was observed in parts of Northland, southern Manawatū-Whanganui, Kāpiti Coast, Wellington City, and large swathes of the upper and western South Island. Pockets of well above normal rainfall (>149% of normal) were observed in Nelson and Marlborough. Winter rainfall was below normal (50-79% of normal) in western Northland, southern Auckland, parts of Gisborne District and Hawke's Bay, and southern Canterbury. An isolated area of well below normal rainfall (<50% of normal) was observed near Wairoa. Near normal rainfall (80-119% of normal) was observed elsewhere.*

**The paper mentions the storm's impact on Miramar was assessed as a 1 in 60 year event. How is this measured (I am aware that the closest long term rain gauge is at the airport so was this the measuring device used?).**

*Often the assessment is made as a compared experience (flood water levels in a community, street, or stream) against the predicted Flood Risk Analysis on the GIS layers, assessed over the period of heavy rainfall. Whilst not an exact science in every case, the observed flood levels in parts of Miramar's lower areas was consistent with the 1-in-60-year description (see below image).*



**NIWA have done some projections showing we can expect ~15% more rain, depending on what part of the Greater Wellington area. Are Wellington Water adopting these projections when planning for capacity upgrades when completing renewals?**

*Wellington Water's peer reviewed Flood Risk Analysis is based on a 1-in-100-year event + 20% Climate Change Intensity and the tail effect of Sea Level Rise on the lower reaches of the stormwater network. These are used; however, the overall network capacity is a combination of capacity in pipes, open channels, and overland flow paths. This flood risk analysis is also available on-line for no charge and on all Land Information Memoranda (LIMs) when purchasing a property.*

**Is it possible to pair Wellington's projected rainfall with that of another city that is currently experiencing the level of projected rainfall to assess what lessons may be learned? For example, Westport's rainfall is significantly higher than Wellington's but it is a thriving township. Do they have different drainage standards?**

*The drainage standards used are the Regional Standard for Water Services (Three Waters) which is updated every one to two years. The standard is widely consulted at each iteration with the Councils and developers so that the standards for the future are well known. The challenge in much of the city is that there wasn't a historic standard that provided the higher levels of service our newer subdivisions enjoy. The Regional Standard is not retrospective, and the areas targeted for increased density in line with the Spatial Plan are the areas where attention is needed first.*

*Officers consider that comparisons with other cities are problematic. The infrastructure performance and rainfall in each City is different, Westport for example is very different from Wellington.*

<https://www.newsroom.co.nz/planned-retreat-from-flood-prone-westport>

### **How did this weather event compare against other extreme events – for example the 1976 Stoke's Valley floods?**

*The 1976 floods caused widespread flooding and landslides, including a fatality. There was 350mm of rain fall in 24 hours. Extreme weather events have always happened, climate change and a warming earth makes them more likely to happen.*

*The July 17<sup>th</sup> weather event was more comparable with the Wellington City Floods of 2013, followed by the Tawa Floods of 2015. The latter of which was the driver behind the significant additional investment of \$18.5m from the 2021 Long-term Plan in improving flood risk resilience in Tawa. There were advance warnings and the likes of stormwater sumps and culverts were inspected in advance so that we were as well placed as possible.*

### **Para 16 – What is the legal origin of the principle that geographically lower landowners must accept the natural flow of water from a higher landowner? Is this from the RMA, Council policy or elsewhere?**

*The landowner relationships and responsibilities, including the Regional and Local Authority roles in management of Streams and Open Channels are set out in the regional Waterways agreement of 1977, updated with clarifications in 1980. The 1977 agreement establishes the natural relationships between adjacent land parcels, with the Resource Management Act, Regional Council Natural Resources Plan and The Regional Standard For Water Services setting out responsibilities for discharges to land or network.*

*In particular, a new subdivision that is subject to a Resource Consent must 'avoid, remedy, or mitigate any adverse effects of activities on the environment' Therefore there is a requirement to ensure the development does not cause flooding to others. For a person contemplating a build of a new house, they will require a building consent which is reviewed against the Regional Standard for Water Services and is required to be hydraulically neutral. In practical terms this means a property is hydraulically neutral when the peak stormwater discharge flow rate from the proposed site will be the same, or less than, what it was prior to development. A hydraulically neutral development will not cause additional stress to the stormwater network and will not increase flooding.*

*Many of the Standards applied today did not exist when houses were developed years ago and the network was not designed to provide the higher level of service assigned to the Regional Standard for Water Services. This is where the catchment flood risk analysis and subsequent investment advice is under development by Wellington Water to meet the future needs of Wellington's Spatial Plan.*

**Information provided by Tawa School indicated that the new stormwater infrastructure performed well, but raised concerns about the role of school staff in keeping it clear. Why are school staff responsible for this task? What are the health and safety risks of having school staff perform this maintenance?**

*Wellington Water and their Alliance Contract are responsible for ensuring that storm water 'inlets' that convey stormwater into the piped network are maintained and cleared. If the school observes debris accumulating in the 'inlet' to the new infrastructure between cleaning cycles the best course of action is to contact the WCC Contact Centre to log a job for this to be done. There is no expectation on the school to undertake this task.*

**What are the health and safety risks associated with Council staff responding to storm events? How are these risks managed?**

*The risks are varied by department. The variety of responses extends through the WCC Tree Teams, Roading Engineers, contractors for road sumps and flooding to Wellington Water teams responding to network issues. Then there are the wider range of community responses to vulnerable communities and Council Housing tenants who have different risk profiles. Each team will have qualified and skilled responders who at a minimum work in teams. The Council's safety culture continues to provide the principled 'backbone' to those risk assessments that supports staff and contractors to manage the risks at hand without undue exposure of their own safety and well-being. Teams, conducting dynamic risk assessments as an overlay to their existing safe operating procedures to reflect the changes in circumstance, in some cases, recognising that a different approach with mechanical aids will be required. In many cases collaboration is needed between teams that are responding to floods / fallen trees / slips or fallen building materials. The Utilities networks, Electricity, Telcos, Water, the Ports etc are also well connected so that responders can synchronise their approach and keep staff safe.*

*Stress is also recognised as a hazard, and the Council has an extensive programme in place for mental wellbeing.*

**What are the health and safety risks associated with members of the public clearing drains during a storm event? What are Council's legal obligations regarding these health and safety risks?**

*Members of the public are only ever asked to assist with road sump top clearance. Road Sumps (the grills at the sides of the road often referenced as drains) can very easily become blocked by leaves on the top of the grill. The Council only invites those who would be keen to assist in clearing those sump tops with a broom or stick to do so, and only where it is safe, especially from traffic. The body of the sump (beneath the grill) is for specialised equipment and it is important that any messages Council conveys are clear that the public's participation must only be limited to the sump tops, and only when it is safe to do so.*

### Item 3.2 Residual Waste Disposal Options

**Please outline the existing conditions of the resource consent?**

*There is a suite of resource consents with many conditions. These are attached*

**Can the Council proactively seek to commit to conditions on the consent for example, around waste minimisation, community engagement?**

*If a condition is within the scope of the RMA, then it can be included in the consent. Note the current requirement to review landfilling of sludge for example. However, the Council would need to be cautious not to include waste min conditions that are uncertain - organic waste diversion for example will be subject to additional funding and other decision-making criteria.*

**Please outline the existing community engagement forums surrounding the landfill and the history of these, how these operate including how people are selected for them and compensated for input expertise?**

*While officers maintain relationships with a number of community and residents' group, the main forum is the Community Liaison Group (CLG). Maintenance of this group is a condition of consent. Standing invitations exist for representatives from Veolia, Wellington Water Limited, the BRA, OBRA, FOOS. Members are not remunerated. The terms of reference are attached.*

**Given some of these technologies are very expensive and deal with different waste, are there any discussions about investing in them across the region?**

*Not seriously. In truth, the three landfills in Wellington are all owned by Councils and are commercially successful. There is no commercial imperative to seriously look at other options.*

**Why is the original stage 4 design for landfill extension no longer being considered? Is it no longer a reasonably practicable option? What is officer advice as to whether this design is consentable? What improvements to the design are possible to minimise the effects of that design on Zealandia and the biodiversity halo that extends beyond the fence?**

*Officers received strong opposition about the Stage 4 design from almost all key stakeholders in 2019/2020, including Zealandia and the local community, and officers felt it would not receive any level of support through a consultation.*

*Whilst the design is probably still possible, the delay in decisions around residual waste disposal based on initial legal advice has meant that this option is now unlikely to be ready for 2026. It also carries a much higher cost – in 2020, this was estimated to be \$90m and this cost is likely to have increased over the last 18 months. It carries a high risk of appeals and ending up in the Environment Court, with no guarantee that a consent will be granted at the end. Officers feel that the piggyback option is less intrusive in terms of environmental impacts and quicker to construct, as well as a smaller footprint and shorter landfilling life.*

*In terms of being able to mitigate the impact on the Zealandia biodiversity halo, there are few options to minimise the impacts of this, other than pest control, during the life of the landfill – noting stage 4 is anticipated to have filling space of 25-30 years. The design would be required to strip regenerated native bush to within 500m of the Zealandia boundary.*

**What is the planned process for consulting with the public on these different options for residual waste? If the stage 4 design remains a reasonably practical option, how could we consult with the public about their views regarding the two different landfill extension design options?**

*Officers can include the Stage 4 option as part of a consultation, making this essentially a 6th option. Further advice will be forthcoming on the consultation process around this.*

**Waste minimisation assumptions**

**Did any of these options do any modeling taking our waste minimisation plans into account ie Sludge removal, Priority of Organic s removal, Commitment to reduce 1/3 by 2026?**

*Sensitivity analysis on this was done as part of Beca's analysis – this is under section 10 (p38) of the Beca report. Only Waste to Energy is eliminated in different waste volume scenarios. However, the 5 options that are shortlisted do not take into account this analysis – the assumption is that waste volumes will be the same.*

### **Waste to Energy Option**

#### **Where would we consider putting this?**

*Initial considerations of all options (excluding the export option) are that they would be based within the existing site at Carey's Gully.*

### **Capital for Infrastructure**

#### **How will we pay for the landfill extension or any of these options?**

*There is capital funding allocated in the LTP for the landfill extension; funding has not been allocated for any of the other options. We have assumed that disposal/gate fees will be used to cover depreciation and operating costs*

#### **Has there been any modeling on how long this will take to pay back?**

*Payback analysis has not been undertaken.*

#### **le What will be the scenarios if we want to close the landfill earlier and we still need to pay back the \$**

*The disposal fee will be based on the amortisation of capital costs over the life of the landfill. If the landfill is closed earlier, then it is possible that there will be stranded costs. However, dependent on other market forces i.e. competitiveness of other landfill disposal fees in the region, there is potential to consider re-couping costs earlier with higher gate rates.*

#### **Will the need to repay the landfill borrowing keep driving us to keep landfilling?**

*Ultimately this will be a decision for Council – whether to keep operating the landfill to recover costs (and potentially make operating surpluses) - or to forego revenue.*

#### **Another Option- A nuanced option - dramatically slowing down filling up the existing landfill/invest in infrastructure to reduce organics and resource recovery?**

*Originally the sludge project was timed to be ready years 23/24.*

#### **Was there any work done on a nuanced version, that looks at slowing or extending the life of the existing landfill, actioning a waste minimisation strategy that includes capital investment of Organic removal and resource recovery network?**

#### **Is it planned to look at this?**

*Officers have already reviewed the current landfill and consider that the available airspace has been optimised. Regardless of waste minimisation strategies or approached, the consent for the landfill expires in 2026.*

#### **Was any work done on a model that showed a model on how we can extend the life of the existing landfill as Kaikoura had to do- le by compressing waste down to 20 % volume?**

*As above, the consent expires in 2026. At current waste volumes, the utilisation of remaining capacity and the consent expiry align. Our immediate and overriding planning consideration is the need to dispose of sludge.*

**Has there been any work done a strategy to high volume things we can stop putting into the landfill immediately like beds/ mattresses - that take up a lot of volume? Polystyrene?**

*Waste diversion requires an alternate use if landfilling is to be avoided. All recycling needs a sustainable end market.*

*We generally do not accept large volumes of polystyrene. There are some outlets for polystyrene but it is very difficult to collect, transport and handle, and thereby expensive to divert from landfill.*

*Mattresses – could potentially be addressed in the roadmap, but this is more of product stewardship/central government initiative. In NZ, there is no mattress recycling facility.*

**What tools do we have to enforce something like this if we wanted to do that?**

*As there is currently no option for recycling available in NZ, it would be difficult to regulate and enforce. Suggest this be advocated for at a central government level.*

**Has there been any work looking into different systems for the tip face disposal? Ie a conveyor belt Like Perth has so we can decrease this waste to landfill and increase diversion?**

*The materials recycling facility option is essentially what is being described here.*

**Sludge**

**the original dates were 23/24 and now we are saying 2026.**

**What is the reason for the new date?**

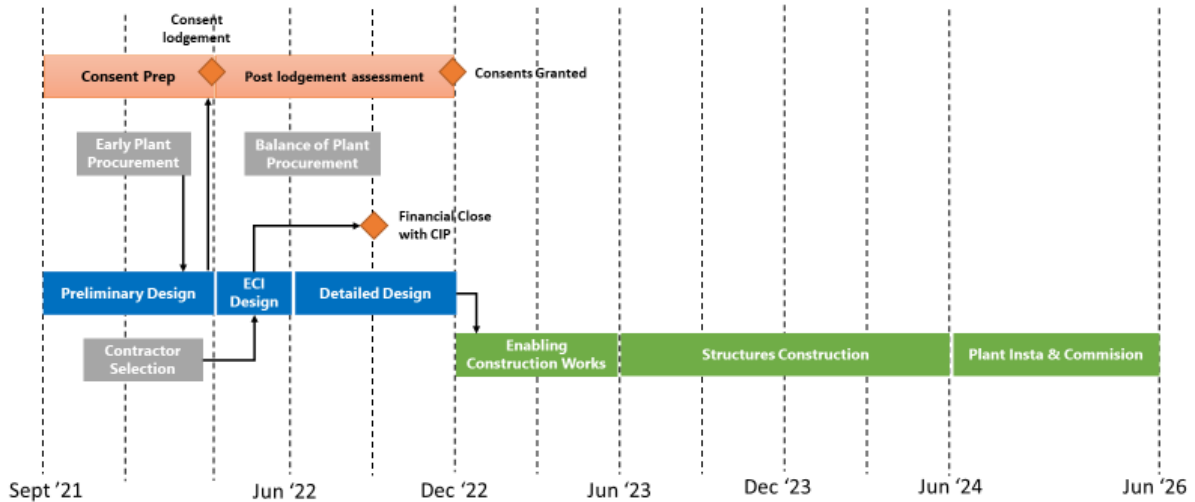
**What is the anticipated timing of the new sludge plant?**

**We did ask for a timeline on this - is there one we can see, please?**

**Is there any way we can speed the sludge project up?**

*This is the project team's high level plan. It oriented around the expiring of the landfill consents. It is conservative. Given the complex nature of financing, consenting, procurement and construction, officers consider that a conservative approach is prudent.*





### How much do resource consents cost?

*At a very high level guess, we expect this to be \$1m – this would include application costs, legal costs, technical expertise, Environment Court costs, but does NOT include construction costs. The largest cost of a consent is usually the conditions that are set to mitigate/offset environmental impacts.*

### what is the timeline and process to get resource consent?

*We would hope to be gaining a resource consent by 2023; this will allow us time for construction. However, this is unknown and will depend on appeals and/or Environment Court proceedings*

### Do we need to do a detailed design of the landfill extension first to get Resource consent for it?

Yes

### Could we get an extension on our existing landfill consent if we were going for a slowing it down model?

*No. GWRC have indicated that we would require a full consent application for utilising any remaining space in the existing footprint. Given that the consent expiry and filling capacity aligns in timeframes, officers see no value in applying for a consent for the existing footprint. If additional waste minimisation initiatives were implemented (assuming that sludge has been removed), possibly giving us 2 years capacity beyond 2026, we have been advised that full consent application would still be required – i.e same cost to consent regardless of the number of years.*

### Composting/ Resource Recovery space / and Tip Shop

- **what thought has been given to commitment on how we would run these operations if we look at the Piggyback landfill option?**

*We are waiting on decision on residual waste before considering this.*

- **What consideration is given to the speed of filling up the landfill if we don't have these services in operation**

*Officers hope that we would still be able to deliver these services, but likely at a different location.*

- **has any thought been given to a lesser extension enabling these services to still be on-site?**

*No. It is likely that the piggy-back option would still require the same base footprint, from an engineering perspective. The reduction of size/capacity would likely be in height.*

- **Has any thought been given to the quarry site for some of these services?**

*The quarry site is very constrained for space already, so we have not considered this site.*

#### **Carbon Emissions reduction from each option- just making sure this will come back in the February report?**

*This should be available shortly – we're just finalising the report with the consultants. At a high level, across all 5 options there is very little difference in carbon impacts. The ability to make any meaningful carbon reduction comes from reducing waste at the front end.*

#### **How do all these options- measure against the Four well beings?**

*Unknown. We have not considered this at this stage.*

### [Item 3.3 Strategic Waste Review Update | He Ara, He Para Iti / A Pathway, Minimal Waste](#)

#### **What is the latest with the organic waste collection trial?**

*The trial was expected to conclude in October, but recent COVID alert level changes have delayed the final kerbside audit of the participants. This is currently scheduled for early November and we will run the trial for a couple of weeks post audit before concluding. Results will then be analysed and a report back to Council is likely to be delivered in early-mid 2022. Note, we are currently trying to recruit for the Project Lead, due to a staff departure in August 2021; this may delay the results being available.*

#### **What incentives can the Council impose on construction and demolition waste through consenting or other legal powers? How would diversion rates work?**

*As Central Government progress regulations within the Building for Climate Change space, it will support the viability of diversion facilities. Central Government is also introducing the waste levy to C&D landfills which should provide some incentives to develop diversion activities and facilities.*

*Note that a large amount of this material does not come to Southern Landfill, and therefore we are not able to significantly influence the space at this time. The Roadmap recognises the need to assess options to further recover C&D debris and make material available for reuse.*

*Council currently does not set the regulatory framework for C&D material reuse and we don't have any powers to influence the C&D industry. We have C&D waste plan requirements for high value*

*building projects, through the Waste Bylaw, but this is predominantly for data gathering purposes, and we can only encourage diversion, not require it. Central Government therefore needs to regulate before we can be effective in this space.*

**Could the contribution and expertise of EnviroSchools be it in this report?**

*The important contribution of EnviroSchools comes under 'behaviour change'. The Council funds EnviroSchools.*

**Are the outcomes of the organic food waste trial feeding into this process? Can we move to a "doing" phase of this work more quickly?**

*Organic waste is referenced in the report. Organic waste is likely to cost at least \$5m-\$10m per annum. This is not in the current LTP but will be considered as part of the kerbside services review, although not necessarily for immediate implementation. We cannot make any step changes in this area until we no longer have sludge... unless we want to import other waste/dirt to mix with remaining waste.*

*There are a number of things that need to be considered as we work through the results of the trial, including, but not exclusively:*

- *Quantify the potential diversion impact from each method*
- *Quantify participation and (where relevant) set out rates for each method*
- *Provide household satisfaction/feedback with each method*
- *Establish whether there is willingness to pay for each method following the trial and if so, via what means e.g. rates or user pays*
- *Gain local data to enable better cost estimates for each system and impact on overall waste management costs*
- *Gain the necessary data to enable the preferred system to be specified for any future procurement process*

**Special waste - toxic waste such as Asbestos, contaminated soil currently being secured in concrete and landfilled - there is no plan to deal with this is there? Which means that there can never be zero waste? Are there processes available for these toxic streams to be detoxified although difficult?**

*To clarify, asbestos waste and contaminated soil are NOT secured in concrete. Typically, contaminated soil is deposited into a specially engineered 'dry cell' – essentially a clay lined pit. Asbestos soil is also deposited into the dry cell area, while asbestos materials are disposed in a specially designated area of the landfill, rather than mixed with general household waste.*

*There is currently no alternative process/disposal for asbestos waste.*

*Contaminated soil is usually received at Southern Landfill when it cannot be remediated by the disposer, and usually comes from the excavation for foundations of new developments/buildings.*

*In some cases, contaminated soil can be remediated but it requires a substantial amount of land to do so as it involves spreading out of the soil in thin layers, and periodically turning the mixture over to aerate the mixture, thereby cultivating microbial degradation of hazardous compound. This would be the responsibility of the developer/disposer.*

**Building shrink-wrap plastic- is there a program available or a possibility that product stewardship scheme to make building companies take responsibility for this?**

*Building shrink wrap plastic has not been identified as a priority product by Central Government, and therefore is not on the list of product stewardship schemes being scoped and/or developed.*

*Most of this material goes to construction and demolition landfills. Typically, this material has been wrapped around buildings which are being renovated or treated for asbestos, and therefore is often contaminated by hazardous dust which would preclude it being able to be recycled.*

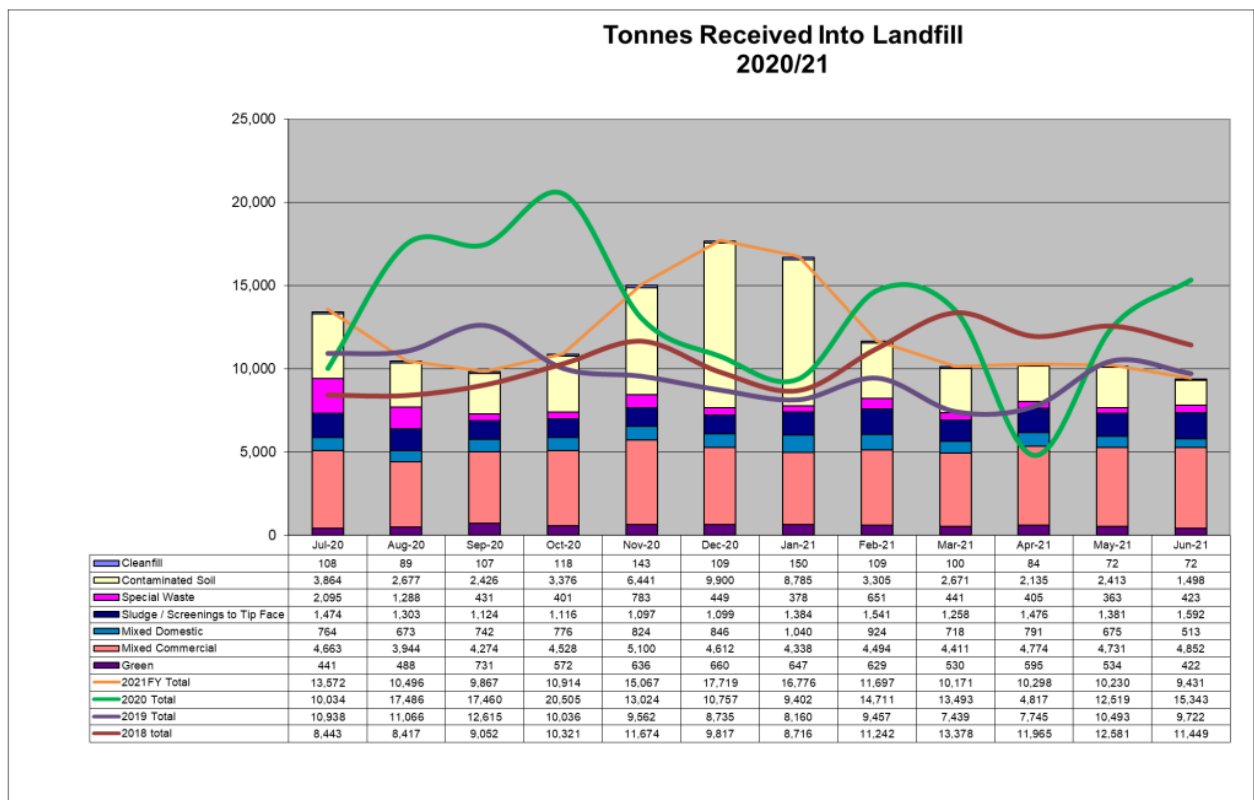
**I would like a better understanding of the Financials & Metrics, please that include the last financial year**

- **Profit/loss from the southern landfill operation for the last 10 years**

*Officers will need to collate this separately*

- **how many tonnes went to landfill increase/reduction - please can you supply a graph on increase/ decrease on the types of waste coming to SLF for the last 10 years**

*Officers can provide this analysis, but it will take some time to collate. In the meantime here are the statistics for the last four years*



- **Was there any relationship between tip fee increase and reduction of waste - ie waste flight?**

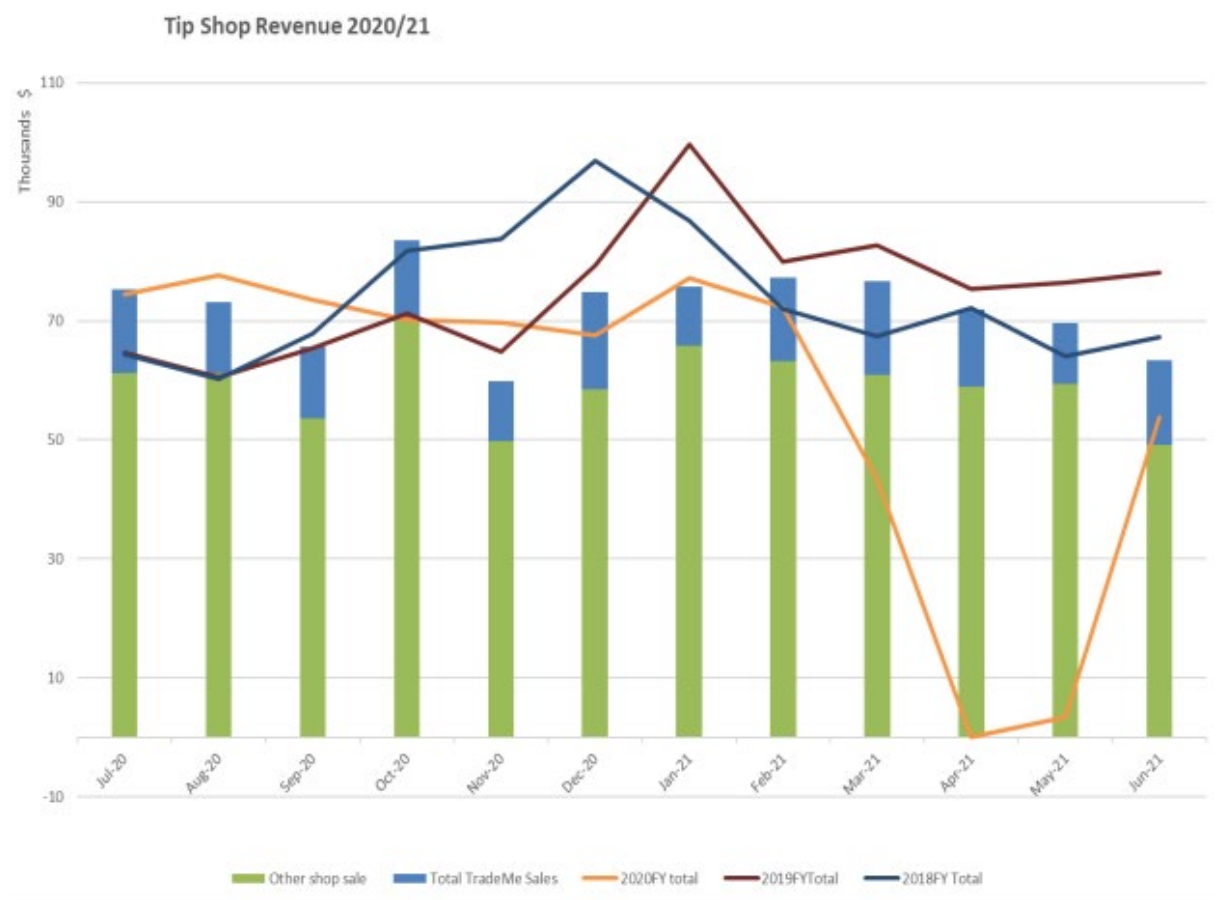
As we have generally increased our fees at the same rate as the other 2 landfills in the region, we have not seen any significant waste flight. We expect this would change if our disposal rates were significantly higher.

- **Tip Shop - What were the tip shop profit /loss and diversion amount?**

We can provide this at some level, but it will take some time to pull together. We do not currently measure diversion in tonnages; we are looking at introducing this for the future. We estimate about 100 tonnes per year is diverted through the Tip Shop, but we will need to confirm this through future weighing audit processes.

- **Have sales been increasing at the tip shop and through trade me sales?**

Shop revenue is generally static

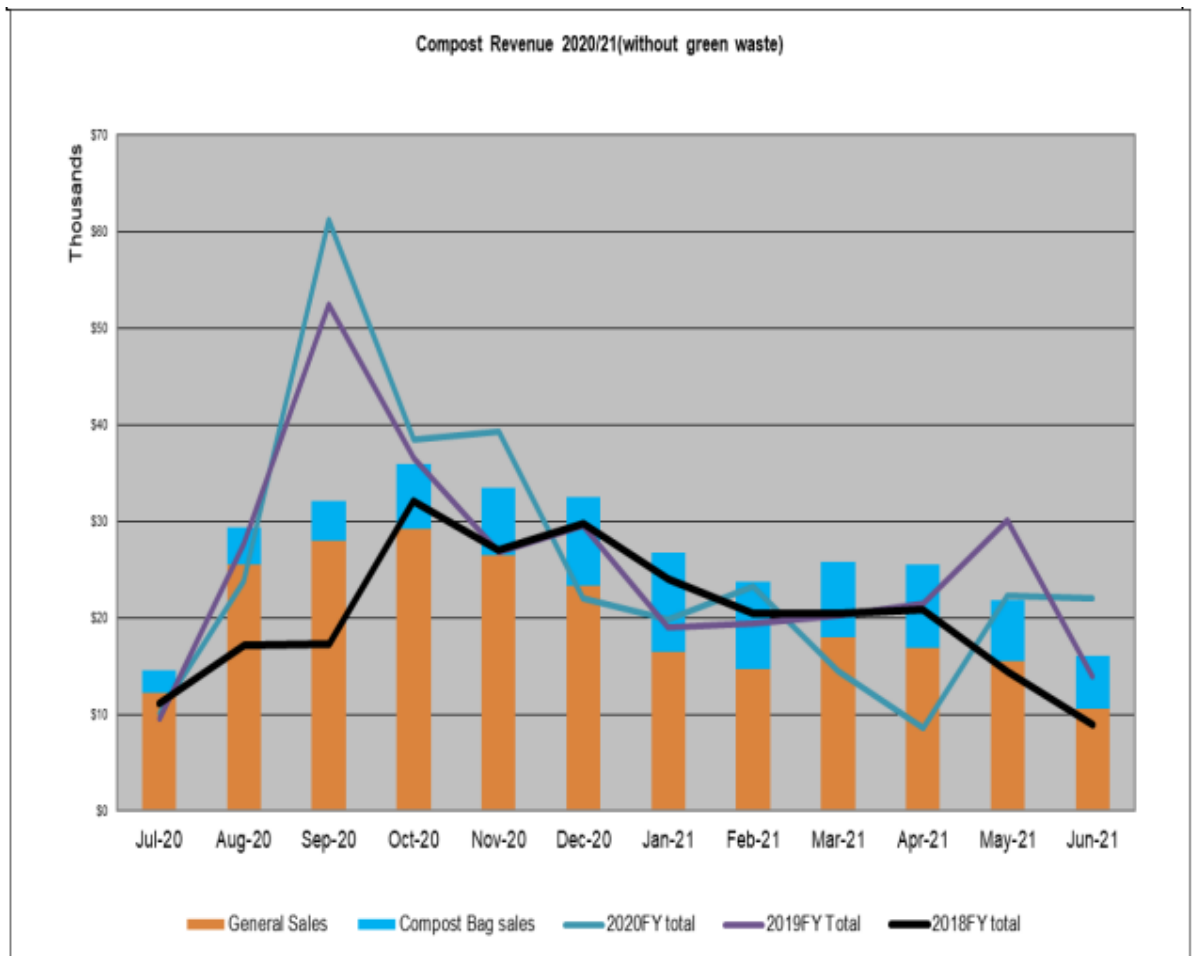


- **Has the diversion amount increased?**

We currently do not measure sales through the Tip Shop by weight, so we cannot provide this at this time.

- **Capital compost- what was the profit /loss and diversion amount?**

Officers can provide this analysis, but it will take some time to collate. In the meantime here are the revenue statistics for the last four years. Compost generally breaks even if green waste revenue is included



- **How much accumulated cash/capital is in the bank what is the plan for it?**

*Officers will provide this advice separately*

- **ETS from landfill - how or from what account are we paying for this? Have we modelled a graph on lowering ETS fees alongside waste reduction?**

*ETS costs are factored into the landfill fees. We have not modelled lower waste and lower ETS fees, as it is a relatively linear relationship in terms of calculating our emissions liability – i.e less waste = less emissions costs*

- **what % of the income is given to waste minimisation projects, including grants not including recycling? What % is paying for recycling?**

*We can provide this, but it will take some time to pull together*

- **are we measuring the diversion rates of our investments in waste minimisation projects/ waste minimisation grants?**

*Typically these are behaviour change projects, and difficult to measure.*

- **In May/ June 2020 Annual Plan council passed a resolution saying that any profit from Southern landfill would go to waste minimisation projects or back into waste minimisation grants. Please can you outline what the profit was and what is intended to happen to this?**

*Officers will provide this advice separately*

- **Have we modeled what the increase in MfE funding be due to the landfill levy increase?**

*At a high level, for 2021/2022 we will receive double the amount of levy. This will equate to \$1.4m of funding received vs \$700k for 2020/2021*

- **We say that closing the landfill will increase rates by 2.5% Has the sale of rubbish bags been factored into the increase in rates thinking?**

*No, rubbish bags are a standalone activity that is self funding, and do not impact rates funding.*

**Timing -**

**When can we start real waste minimisation?**

**para 23. I am concerned this says we can't start waste minimisation for 5 years? But the strategy says starting years 1-3 but are these initiatives concrete diversion strategies?**

*The draft strategy indicates that in years 1-3 we will look at developing a behaviour change programme, undertake a kerbside services review (to report back to Council with options), and implementation of bylaw requirements and initiatives.*

**My understanding of this is actually a financial issue not a waste minimisation issue?**

*It is a staff resourcing and a financial issue. The behaviour change and waste minimisation areas have limited resources. The waste funding policy that requires us to cover all costs by revenue.*

**Have we looked into costs/ financial ways to attract waste if we need to so that we can start a waste minimisation strategy?**

*No – generally importing or attracting waste does not align with Council policies.*

**Behaviour Change**

**Have we given any thought to promoting messages on our rubbish bags ( thousands on the street each week) as per Darcy's petition on messaging/ education on our rubbish bags.**

**le how much carbon is in this rubbish bag.**

**How long this waste will take to decompose at landfill etc?**

*Whilst this is a good thought, the practical realities of the size of the bag and conveying essential information about collections on limited space makes this unlikely to be effective. Officers can provide further advice in future.*

**Ongoing project**

**How will the organic trial results impact this report- when will we get this report?**

*We are currently seeking to recruit (following the departure of the Project Lead) to complete the Para Kai trial, analyse results and report back on next steps. This is proving difficult, but is underway.*

**When will the Resource Recovery business case be done? How will it help inform this plan?**

*This is currently in the project planning stage with our Waste Minimisation team, which has also been impacted by staff shortages and time taken to recruit for vacant roles. We intend to report back early in 2022.*

**para 27. When will the kerbside review services come back to the council for review?**

*Our intention is to come back to the Infrastructure Committee in February/March 2022 – we have requested being included on the Forward Programme.*

**Have there been any desktop studies on bringing the waste team workforce back into council?**

*Not currently. Given nationwide shortages on truck drivers (currently our collectors have 7 vacancies (with 700 truck driver positions being advertised on TradeMe) they are struggling to fill) and the difficulty with sourcing plant and equipment, we don't feel that this is currently a viable option.*

**Sludge removal**

**the waste diversion strategy doesn't yet assess the timing of the removal of sludge from the landfill?**

**Has the ability to trial projects and scale up Waste Minimisation once this is removed been taken into consideration?**

*We can consider this as part of the roadmap.*

**Organic collection**

**Are we doing any work looking at a staged plan - particularly inner-city?**

*We are waiting for the Para Kai trial to complete, and for results to be analysed.*

**It looks like we are not looking to support business behavior change until year 4. There is an immediate opportunity to support businesses into kai to compost- ie a few months free subscription? And to understand the cost benefits of recycling ( many are still sending straight to landfill as it is easier time-wise)**

*We are currently restrained by staff resourcing and higher priorities utilising existing staff. We have chosen to consider kerbside waste but this can be addressed when/if Councillors want to re-order the roadmap priorities, noting that financially and resource-wise, we cannot do everything in one go.*

**Have we started talking with MfE about a funding plan for our organics?**

*No, we are awaiting the outcomes of the trial. If we seek MfE Waste Minimisation Fund funding, we will need to be very clear about exactly what is being requested. MfE will expect that Crown funding is at least matched by local funding.*

**Kitchen waste /Organics in Insinkerator**

**Have we looked into the impacts of flushing organics down insinkerators?**

**Do we know how much organic food waste is estimated to be put through our wastewater system?**

**Would removing this from the system help decrease waste going to landfills?**

**is there a by-law we could use to help defer**

*We will seek further advice from WWL on this issue. Ultimately, a significant element of food waste disposed via insinkerators ends up as sewage sludge. Insinkerator waste is essentially the same as domestic sewage, it just hasn't been processed by a human.*

**Capital Compost Markets and potential Council opportunity for organic fertilizers -**

**Para 32 - How much work have we done into understanding end markets?**



*We have a well established market for Capital Compost products. Note, fertilizers are typically chemical, and therefore not likely to be organic.*

**Do we have an understanding of how much glyphosate residue we have in our compost and how much this plays to market advantage for compost?**

*Yes, all our products are tested, and are compliant to NZ standards. We also meet Biogro organic certification requirements.*

**Do we know how much glyphosate is in our compost product?**

*Yes, we have very little in our green waste. We are within the NZ standards*

**Diversion Measurements- is there a rationale to use diversion metrics to help measure our success ie - potential emissions?**

*We need some way to measure our success that can be calculated or quantified. We are happy to consider additional or alternative measures through the roadmap process.*

### Item 3.4 Wastewater Laterals Policy (2021)

**The paper jumps over the reasoning around the change in officer position from responsibility to ownership, please outline the basis of the change in position?**

*The LTP 2021-31 initiative this relates to was explicitly about the change of ownership of a strategic asset –requiring LTP consultation under the Significance and Engagement Policy. Officers did not re-discuss the differences between ownership and responsibility given the focus of the LTP consultation was ownership. Further context is provided here and information on the differences between responsibility with and without ownership. However, there has been no change in position from the LTP to the proposals in the paper.*

*The wastewater laterals analysis started in 2015/16 and led to consultation for the Annual Plan 2016/17. In the 2016/17 consultation the options talked about Council responsibility, either through ownership or responsibility. The features and distinction between "responsibility" and "ownership" can be summarised as:*

- *Taking ownership: full Council control and ability - 1) to fund renewals through depreciation, 2) to undertake pro-active maintenance and cost-effective options (for example, doing renewals and /or new re-lining options alongside mains renewals), 3) address environmental costs like infiltration, and to also work to positively influence property owners to better maintain wastewater laterals in their properties. There is also poor mapping of laterals networks, and the Council will be able to do this better with ownership.*
- *Taking responsibility: only operating expenditure for replacing failed laterals is possible and work like root clearing, without addressing network condition (based on being unable to fund capital works without owning the asset)*

*The ownership / responsibility discussion first came to the Council in 2016 (Environment Committee 2016). Subsequently the Annual Plan 16/17 consultation talked about responsibility and the benefits of the ownership option. After this, further work was completed on the ownership option, including a costing exercise as noted in the paper with the intention of ownership being considered in the LTP2018-28. This decision was held over until LTP 2021-31 consultation. Following discussions and presentations to Councillors in 2020, the option of ownership was presented, budgeted, and*

*subsequently approved in the LTP. The current papers are consistent with the LTP option of ownership.*

**Please explain the “case-by-case basis” outlined on page 4 of the proposed policy?**

*This question relates to transition provisions that are in the policy to manage in the time period between the Long-term Plan approval on 31 July 2021, and the policy coming into effect (subject to approval at the meeting).*

*As few cases are expected in the time period, and officers are treating each case as it arises between key staff at the Council and at Wellington Water. As the detailed policy has not yet been approved, the approach of having key staff look at each case was decided as an interim measure.*

*Cases can come up in two ways at present, a failure of a wastewater lateral in the road, or a consent requirement to renew a lateral. Both these have a clear contact point with the Council or with Wellington Water and are being managed consistently by staff who understand the new policy well.*

*There has been one case of a renewal being required as part of a building consent. Officers have worked directly to raise a job for Wellington Water to complete the required work.*

**How much has been paid to property owners since the policy to take responsibility was implemented?**

*At this stage no reimbursements have been paid, as no cases have come up where people have done the work that the Council will now be responsible for. There is provision in operating expenses for root cutting work of \$250,000 this year, either directly by the Council / Wellington Water or reimbursement. There is a small risk that people unaware of the change may pay, when others do not. Officers will work to mitigate this through general communication following approval, and it will be highlighted on the policy web pages. However, most cases are likely to come to the attention of Wellington Water or the Council if raised through a consent process or reporting of a fault, or even an application for work in the road.*

**What is the difference between a wastewater lateral needing to be upgraded or reconfigured as part of a consent versus an exiting wastewater lateral that has durability issues identified in regard to the proposed development?**

*A reconfiguration is where a development in itself needs a lateral to be in a different location for the benefit of that development (subdivision of one lot into two or more lots) and an upgrade would be where the lateral need to provide more flow capacity due to more houses / toilets using that lateral than it can currently accept. These are not related to the existing condition (durability) of that lateral. Where the matter is simply a durability issue (cracks, joint separation etc) then the policy will provide for the replacement of that portion of wastewater lateral that lies in the road.*

**Are there plans to issue operational policy outlining processes for identifying a fault? How does this fit with the recommendations of the Mayoral Taskforce?**

*The operational provisions exists in the Regional Standard for Water Services and Specifications. This standard is regularly updated and is consulted through the Developers' Forum. The standards is that same that new building consents are reviewed against. Since 1 July, there has been one instance of where a new building consent required a portion of the wastewater lateral to be replaced due to durability issues and we have taken the prudent step of following the 'spirit' of the policy position adopted in the Long Term Plan and replaced that portion of lateral in the road.*

*The synchronisation with the Mayoral Taskforce is removing the barriers to replacing or repairing wastewater laterals in the road that are potentially exfiltrating into the storm water network or environs. There are a variety of reasons these laterals are in various states of repair, many of which are due to what is termed a 'third party strike or damage' where the lateral is inadvertently damaged by others who work in the road or from changes to vehicle loading on the road – none of which the home owner has any control over with this 2021 wastewater laterals policy removing that barrier.*

### Item 3.5 Forward Programme

#### **What is the Mayoral Taskforce paper about?**

*When advice around the Taskforce was received in March 2021, Council resolved ....'that officers will report back to the committee on progress in October 2021'.*

### Item 4.1 Proposed Land Acquisition

#### **Why is this in public excluded given that agreement in principle has been reached?**

The proposed acquisition is between Council and a private landowner at an agreed value supported by a current market valuation.

It is considered a commercial transaction between parties and so treated as being commercially sensitive as we do not wish anything to unnecessarily prejudice our commercial contract.

Once the contract of sale and purchase is settled in the future, we can release the report to the public.

This was supported by our General Council.