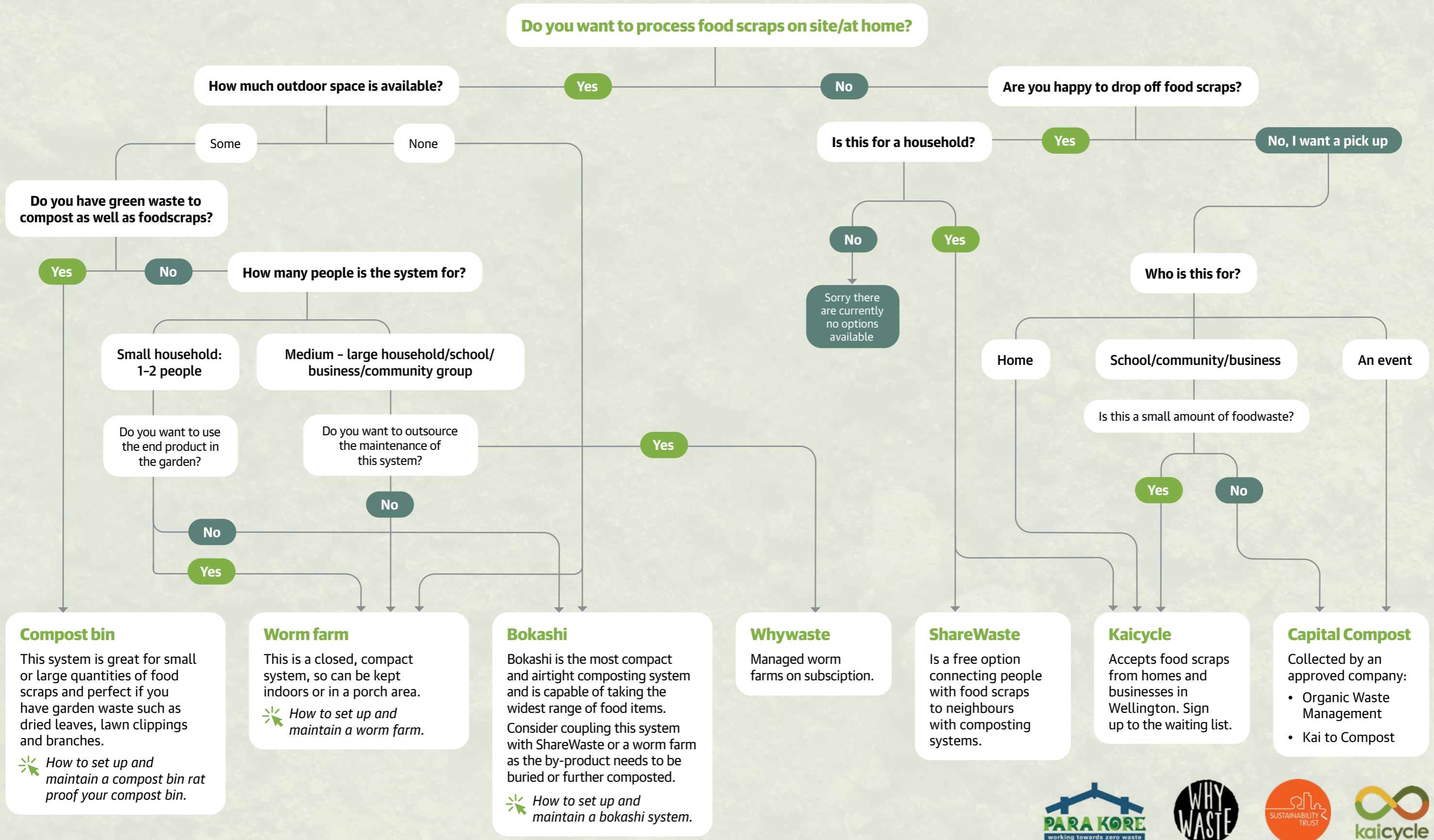


# Options for composting foodscraps in Pōneke



**Compost bin**  
 This system is great for small or large quantities of food scraps and perfect if you have garden waste such as dried leaves, lawn clippings and branches.  
 ✨ *How to set up and maintain a compost bin rat proof your compost bin.*

**Worm farm**  
 This is a closed, compact system, so can be kept indoors or in a porch area.  
 ✨ *How to set up and maintain a worm farm.*

**Bokashi**  
 Bokashi is the most compact and airtight composting system and is capable of taking the widest range of food items. Consider coupling this system with ShareWaste or a worm farm as the by-product needs to be buried or further composted.  
 ✨ *How to set up and maintain a bokashi system.*

**Whywaste**  
 Managed worm farms on subscription.

**ShareWaste**  
 Is a free option connecting people with food scraps to neighbours with composting systems.

**Kaicycle**  
 Accepts food scraps from homes and businesses in Wellington. Sign up to the waiting list.

**Capital Compost**  
 Collected by an approved company:  
 • Organic Waste Management  
 • Kai to Compost



**Need help setting up a system?**

**Wellington City Council** offers free compost workshops and compost systems for schools. *For more information click here.*

**Para Kore** delivers a range of resources and support, primarily available for Māori organisations such as kura, kōhanga, and marae, to help install and maintain compost systems to help support Papatūānuku. *Contact your local kaiārahi here.*

**Sustainability Trust** delivers, 'Responsible composting', workshops and offers advice to community and businesses. *For more information click here.*

**Para Kai**

**Absolutely Positively Wellington City Council**  
 Me Heke Ki Pōneke