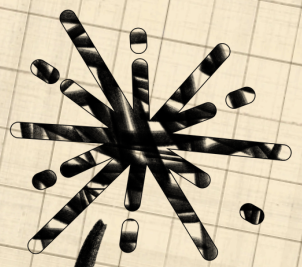


Supported by

Absolutely Positively
Wellington City Council
Me Heke Ki Pōneke



ArtSplash



Day Out Brochure

Experience a
day of art in
Pōneke!

wellington.govt.nz/artsplash

About The ArtSplash Day Out...

Will your school be in the city all day for your concert? Looking for something to do? Apply to participate in a range of experiences offered by local arts organisations! The ArtSplash Day Out will be an unforgettable experience for your students. Show them what a career in the arts can look like, what artistic delights are available to them in their city and take back ideas for ways to include arts in the classroom.

We want teachers to enjoy these offerings too, so schools who apply will be given an ArtSplash Host to guide groups around the city.

This brochure contains information about all of our offerings. Some offerings are only available at certain times, have age recommendations and size restrictions. Please take note of these as we will not be able to accommodate variations on what is outlined in this brochure. We ask that teachers apply only for experiences that suit the group they are bringing.

Confirmations of the ArtSplash Day Out will be sent out in mid-June. Registered schools will be given the first chance to apply and experiences will not incur any extra costs.

Applications open on April 30. Spaces are limited and all experiences will be offered on a first in, first served basis.



FAQs

My group is too big for one of the experiences. Can I still apply?

If your group is bigger than the experience allows, and you apply, we will assume that you are going to allow your group to be split up. This is totally fine by us. Schools MUST have enough teacher and/or adult support to care for each group of students if they are split into different experiences. ArtSplash may provide a second host for your school if this is the case.

Can I apply for an experience that is on a different day to my concert?

All experiences will start and end at The Michael Fowler Centre in the city. If your school is willing to pay the transport costs to get your students to the Michael Fowler Centre, you can apply for whichever day(s) you like!

What is an ArtSplash Host?

An ArtSplash Host will be assigned to every school that participates in the ArtSplash Day Out. Your host is responsible for guiding you safely around the city and getting you to your experiences on time. Schools remain responsible for the overall care of their students.

Is there any flexibility on number restrictions and times?

Unfortunately not. Our partners are limited by staffing and space capacities. If your group is too big and you're not able to have it split, please don't apply for that particular experience.

How will my group travel to each experience?

Almost all experiences are within walking distance of the Michael Fowler Centre. For any that aren't, ArtSplash will provide bus transport free of charge.

Is there a cost involved for my school?

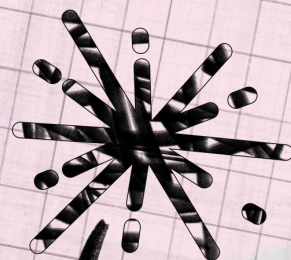
No. All ArtSplash Day Out offerings are free to attend and will be offered on a first-in, first-served basis when applications open on April 30. Schools are responsible only for paying the cost of transport to the Michael Fowler Centre for the ArtSplash Day Out



If you have any other questions, get in touch! artsplashcoordinator@gmail.com

Supported by

Absolutely Positively
Wellington City Council
Me Heke Ki Pōneke



ArtSplash



Contents

Experiences available all week:

Barbarian Productions (drama, interactive art installation).....	pg 4
Wellington Museum Te Waka Huia o Ngā Taonga Tuku Iho (education, arts, history).....	pg 5
Nōku Te Ao Capital E (education, arts, story-telling).....	pg 6
Space Place Te Ara Whānui ki te Rangi (education, science, arts).....	pg 7
Orchestra Wellington (music, theatre, story-telling).....	pg 8
The Hannah Playhouse (theatre, tours).....	pg 9
Government House (tours, visual art, art history)	pg 10
Te Papa Museum (education, arts, history, science, tours).....	pg 11

Experiences on limited days:

New Zealand String Quartet (music, theatre, story-telling).....	pg 12-13
Circa Theatre (theatre, tours).....	pg 14
NZ Portrait Gallery Te Pūkenga Whakaata (education, visual art, art history).....	pg 15
New Zealand Symphony Orchestra (music, theatre, story-telling, composing).....	pg 16
PAYPA (theatre for young people, drama, drama games).....	pg 17
The Circus Hub (circus, drama, physical).....	pg 18

Please note the age recommendations, number restrictions and dates for each experience. Some times subject to change.

Barbarian Productions



About Barbarian Productions

Barbarian Productions make theatre, but not as you know it. We're about making magic happen in unexpected places, filling life with art and art with life. For Barbarian, art is the work we do every day to bring people together. We make live performance because we love what happens in the air between us when we meet face to face.

What's on?

Nau mai, haere mai ki te EggFruit! Come inside our mobile recording booth and leave your own message inside this creative experience. EggFruit gathers and broadcasts thoughts from the people of Aotearoa New Zealand. It's a space for exchange and reflection, offering an alternative approach to public consultation. If you don't like the question, make up a new one! Have a turn being the host of the EggFruit and ask questions of others! While you wait, dress up in some costumes and take some pictures or look around the museum. EggFruit has appeared at WCC's Te Rā o Waitangi, Te Papa's Matariki celebration 2023 and the Eke Panuku's Queens Street Wharf consultation.

Age range

This experience is suitable for all ages.

Venue

Te Papa Museum, 55 Cable Street, Wellington Waterfront - your host will guide you to the exact space within Te Papa and groups will be free to roam the museum on their own after visiting the EggFruit if they wish.

Times

Monday 25 August - Thursday 28 August at:

- 1pm
- 1.45pm
- 2.30pm
- 3.15pm
- 4pm

Sessions are 45-60 mins long.

Maximum Capacity

Up to 60 students.




Te Waka Huia o Ngā Taonga Tuku Iho Wellington Museum




About Wellington Museum

Housed on the waterfront, the Museum offers insight into the social and cultural history of Te Whanganui-a-Tara.

What's on?

 Bring the Museum to Life! Dive into the vibrant world of theatre and storytelling as we transform the Museum into a stage. Students will explore the power of storytelling to form stronger connections to history and explore their creativity through games and performance.

 Art-Making in the Museum: Explore your inner artist as you tour the Museum and consider a variety of artworks. Get up close and personal to the artworks with your own magnifying glass, as we discuss the stories, perspectives and inner secrets of each piece. Finish by creating your own unique artwork from a variety of possible materials.

Age range

Both experiences are suitable for Years 5-8.

Venue

Wellington Museum, 3 Jervois Quay, Queens Wharf, Wellington

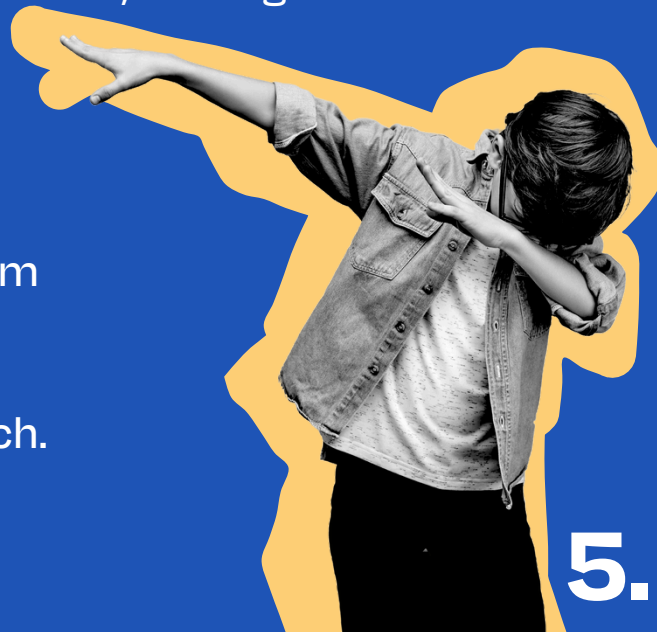
Times

Monday 25 August - Thursday 28 August at:

- Bring the Museum to Life: 9-11am
- Art-Making at the Museum: 12.30-2.30pm

Maximum Capacity

Both sessions can take up to 30 students each.



Nōku te Ao Capital E



About Nōku te Ao Capital E

Tamariki are at the heart of Nōku te Ao Capital E. Their creative experiences and events are designed to inspire the next generation of digital artists, explorers, makers and doers.

What's on?

Experiment With Visual Effects and Storytelling Techniques: Explore your artistic talents and create captivating content using our real-life television production studio, Wellington's beloved OnTV. Ākonga work together to create a live broadcast that showcases their talents in performing arts. Whether it's acting, directing, or working behind the scenes, they will immerse themselves in the dynamic world of television, honing their skills and expressing their creativity.

Age range

Suitable for Years 5-8.

Venue

Nōku Te Ao Capital E, 4 Queens Wharf, Wellington

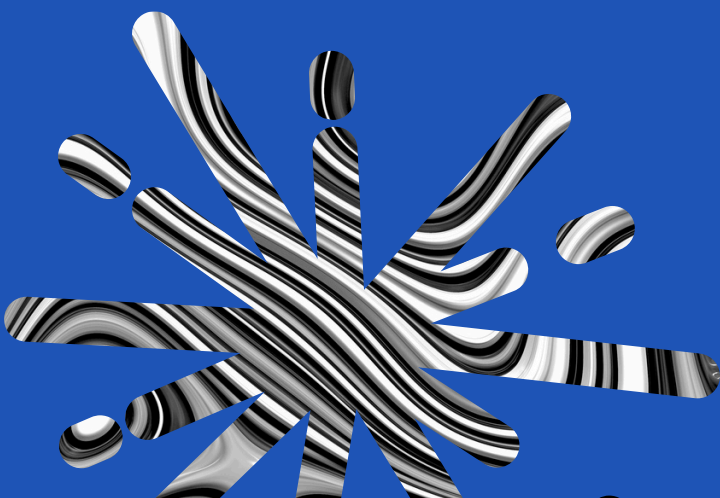
Times

Monday 25 August-Thursday 28 August at:

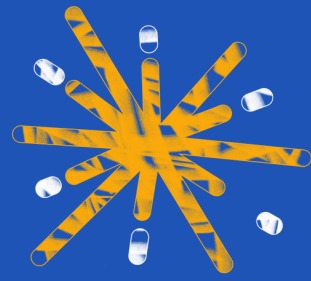
- 12.30-3pm (2.5 hours)

Maximum Capacity

Up to 32 students (minimum 15).



Te Ara Whānui ki te Rangi Space Place



About Space Place

Explore the universe in our interactive galleries. Learn about planets, stars, Matariki, Maramataka, and New Zealand's contribution to astronomy, and space sciences.

What's on?

Illuminating Science With Creativity! Dive into the captivating world of science photography as we transform Te Ara Whānui ki te Rangi Space Place into a creative laboratory. Ākonga explore the power of imagery to connect science and art, unlocking their creativity through hands-on activities and innovative experiments.

Age range

Suitable for Years 3-8.

Venue

Te Ara Whānui ki te Rangi Space Place, 40 Salamanca Rd, Kelburn, Wellington.

Just a short walk from the top of the Wellington Cable Car. Schools will be given free entry to the Wellington Cable Car for their trip there and back.

Times

Monday 25 August-Thursday 28 August at:

- 1.30-3.30pm

Maximum Capacity

Up to 32 students.



Orchestra Wellington



About Orchestra Wellington

With progressive programmes, accessible pricing, and a focus on community outreach, Orchestra Wellington is now recognised as one of the most exciting and progressive orchestras in the world. Our goal is to be the most accessible orchestra in the country. We want people from all walks of life to experience the thrill of live orchestral music through a number of accessibility initiatives and an array of community outreach concerts. Our fun and interactive family concerts have themes ranging from magic to science, circus, to mystery & mayhem! Through our schools programme 'Beat it Blast it!', we bring music to thousands of children throughout the region

What's on?

Join musicians from the Orchestra Wellington Music to Schools programme for fun and engaging 45-minute musical concerts without leaving the comfort of the Michael Fowler Centre!

Age range

Suitable for all ages.

Venue

Renoulf Foyer, The Michael Fowler Centre.

Times

Monday 25 and Tuesday 26 August:

- 2pm
- 3.15pm

Wednesday 27 and Thursday 28 August:

- 11.30am
- 12.45pm
- 2pm
- 3.15pm

Sessions are 45 mins long

Maximum Capacity

Up to 300 students per session.



The Hannah Playhouse



About The Hannah

The Hannah Playhouse is managed by the Creative Capital unit of the Wellington City Council in partnership with the Hannah Playhouse Trust as a home for development of new works, new practice and presentation by the exciting practitioners of the capital city's performing arts sector.

What's On?

Explore backstage at the Hannah Playhouse! Follow the theatre manager on an actor's journey from the dressing rooms to the wings, and onto the stage. Sneak up the turrets of this iconic building to see where the technical operator makes magic happen. Find out how the theatre was built and discover some of the famous faces that have worked at the Hannah from 1973 to today.

Age range

Suitable for all ages. Best suited to senior students.

Venue

The Hannah Playhouse, 12 Cambridge Terrace, Wellington

Times

Monday 25 August - Thursday 28 August:

- 12.30pm daily (30 mins)

Apply for the 12.30pm drama workshop session with PAYPA for tours on Wednesday and Thursday.

Maximum Capacity

Up to 20 students per session.



Government House



About Government House

Government House in Newtown is the home of New Zealand's Governor-General, Dame Cindy Kiro. The house was built in 1910 as a grand English-style mansion. It was extensively renovated between 2008 and 2011, and now reflects New Zealand's cultural identity and status as an independent Pacific nation. Inside you will find taonga and art from New Zealand and round the world, including pieces by significant New Zealand artists, historic portraiture, carved coats of arms, pou, and kaha huruhuru. We also always have an award winning piece from WOW on display.

What's On?

How do we show our identity with art? Join us on a tour of the extensive art collection inside Government House. Bus up to the house, have your lunch with us, then explore the art inside!

Age range

Suitable for all ages. Social Stories for this experience are available on request.

Venue

Government House, entry via Hospital Road gate 51 Hospital Road, Newtown (groups will be provided with bus transport to and from the House).

Times

Monday 25 August - Thursday 28 August:

- Tour one: 12pm - 2pm (including time to have lunch when you arrive)
- Tour two: 2.30pm - 4.30pm (including time to have afternoon tea when you arrive or before you leave)

NOTE: Schools are responsible for providing their own food.

Maximum Capacity

- On Monday 25 August: Up to 20 students per tour
- On Tuesday 26 - Thursday 28: Up to 40 students per tour



Museum of New Zealand Te Papa Tongarewa



About Te Papa Museum

Te Papa is New Zealand's national museum, renowned for being bicultural, scholarly, innovative, and fun. Our success is built on our relationships with and our ability to represent our community. Te Papa is free to enter and explore whether you apply for the ArtSplash Day Out or not!

What's on?

Te Papa is hosting a few of our ArtSplash Day Out Experiences, including Barbarian Productions, the New Zealand String Quartet and the New Zealand Symphony Orchestra. If you are accepted into one of these experiences, your ArtSplash Host will guide you through Te Papa to your experience. If you do not get into any of these experiences, we highly encourage you to take your students along to Te Papa for free as they have a wide range of exhibitions and friendly staff who can show you around!

Age range

Suitable for all ages.

Venue

Te Papa Tongarewa Museum, 55 Cable Street, Wellington

Times

Session times for ArtSplash Day Out events hosted in Te Papa are specified on the organisation's page in this brochure.

If you are not engaging in those events, you can visit Te Papa whenever you like for as long as you like.

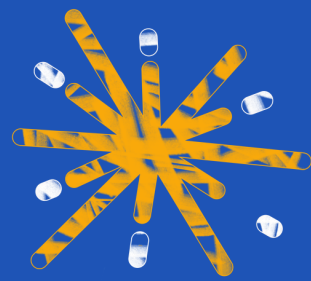
Maximum Capacity

Student capacities for ArtSplash Day Out events hosted in Te Papa are specified on the organisation's page in this brochure.

For visiting the Museum outside of these events, no restrictions apply.



New Zealand String Quartet | The Visitor



About the NZSQ

We are the New Zealand String Quartet - Te Rōpū Tūrū o Aotearoa, the country's longest-serving professional chamber music ensemble. We were established in 1987 to give New Zealanders access to world-class chamber music at home. Nearly four decades later, we're still going strong. Through memorable concerts, dynamic cross-genre collaborations, musical workshops and mentoring, we're committed to making chamber music exciting and accessible to all New Zealanders. **The NZSQ is offering two different experiences as part of this year's ArtSplash Day Out.**

What's on?

The life of a professional musician can seem like a mystery to most of us! But imagine how strange it would be for a visitor from another planet! In this highly entertaining half-hour show, come on a journey and meet a real-life alien who has been sent to Earth to learn what musicians actually do and who is desperate to learn to play the violin himself! Along the way, meet visionary Fijian-born violinist, Wilma Smith, who became the first Pasifika person, to lead a major New Zealand orchestra.

Let your students' imaginations run wild, as they interact with someone truly 'out of this world'. Together, be uplifted by the importance of music in our world.

Age range

Best suited for Years 5-8

Venue

Te Papa, Te Marae

Times

Tuesday 26 August - Thursday 28 August at:

- 10.30am
- 12.30pm

30 minute duration

Maximum Capacity

Up to 100 students per session



New Zealand String Quartet | Local Heroes



What's on?

The New Zealand String Quartet invites you to its flagship education program for young people, "Local Heroes". The home of our country's great stories, Te Papa, provides a poignant and special atmosphere for listening and learning. Students will experience the magical intersection of music and storytelling, hearing the story of a local Kiwi hero through music--creating lasting and meaningful memories that will shine brightly in their hearts and minds long after they have returned home.

The hallowed halls of Te Papa provide the perfect place for students to engage, not only with the extraordinary live performance of the award-winning New Zealand String Quartet, but also directly with actual artefacts and exhibits from the local story being shared.

A truly participatory experience, expect surprises and wonderment, in what will be one of the most memorable afternoons of the school year.

Age range

Best suited for Years 5-8

Venue

Te Papa, Te Marae

Times

Tuesday 26 August - Thursday 28 August at:

- 2.15pm
- 3.45pm

45 minute duration

Maximum Capacity

Up to 100 students per session



Circa Theatre



About Circa Theatre

Circa Theatre is a champion of New Zealand Theatre and has a nationwide reputation for excellence. We have been champions of quality playwriting and performance since 1976, and we continue to ensure that theatre practitioners are well-supported so that they can make the best theatre in New Zealand.

Hundreds of productions have been presented by Circa. We have two performance spaces where 20-30 shows are staged each year, providing the Wellington theatre-going audience a very busy and diverse bill of entertainment!

What's On?

Lights, music, action! Ever been behind the scenes in a theatre? Come to Circa Theatre and get a special tour to see what goes on in our building.

How do we bring our audiences the magic of theatre? Who is involved, and what do they do? Circa staff will take you on a guided tour and answer all of your questions about how theatre operates

See what the actors and crew see, and see what life is like working in a theatre.

Age range

This experience is suitable for all ages, but is more suited to older students in Years 5 and up.

Venue

Circa Theatre, Wellington Waterfront.

Times

Tuesday 26 August and Thursday 28 August ONLY

- 10am
- 1pm

All sessions are 45 minutes long

Maximum Capacity

Up to 20 students per session



NZ Portrait Gallery | Te Pūkenga Whakaata



About the NZ Portrait Gallery

The New Zealand Portrait Gallery Te Pūkenga Whakaata was founded in 1990 as a charitable trust. We have been in our permanent home in Shed 11 on Wellington's waterfront since 2010. We enable audiences to encounter portraits of New Zealanders who, in all their diversity, have shaped our country's development or influenced the way we think about ourselves. Through portraiture, we offer perspectives on ourselves, our history, our creativity, and our place in the world.

What's on?

Discover the art of self-expression at the NZ Portrait Gallery! Students will embark on a guided tour of our self-portraiture exhibition, exploring the stories behind each piece. Afterwards, they'll unleash their creativity with a hands-on activity, crafting their very own self-portraits to take with them.

Age range

Suitable for all ages.

Venue

NZ Portrait Gallery, Shed 11, 60 Lady Elizabeth Lane, Wellington Waterfront

Times

Thursday 28 August ONLY

- 9.30am
- 12.30pm
- 2.30pm

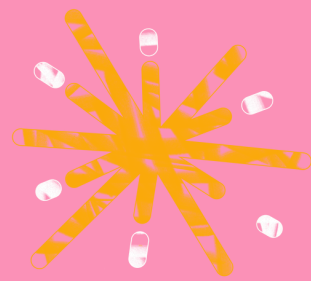
All sessions are 1.5 hours long

Maximum Capacity

Up to 40 students per session



New Zealand Symphony Orchestra



About NZSO

The New Zealand Symphony Orchestra is your national orchestra. One of the world's oldest national symphony orchestras, it has entertained and inspired audiences with memorable concerts and recordings since 1947. Recognised as an outstanding orchestra of international stature, its reputation for artistic excellence attracts many of the world's leading conductors and soloists each year. The orchestra is committed to the development and celebration of Aotearoa New Zealand composition and young musical talent through the Engage programmes and NZSO National Youth Orchestra.

Find out more at nzso.co.nz

What's on?

NZSO Creative Music Workshop: Give your class the opportunity to compose and perform their own piece of music! Led by New Zealand Symphony Orchestra Animator Chris Lam Sam, this free, fun workshop will spark creativity as children collaborate to create original music based on a theme, using hand-percussion instruments provided by the NZSO. The highlight? They'll perform their composition live on stage at the Michael Fowler Centre before singing in their evening concert. A fantastic, hands-on experience that will inspire a love of music and performance! Sign up your class today for this unforgettable musical adventure!

Age range

Best suited for Years 3 - 6

Venue

Te Papa, Soundings Theatre

Times

Monday 25 August - Tuesday 26 August at:

- 1pm

Sessions are 1.5 hours long

Maximum Capacity

Up to 30 students per session



PAYPA



About PAYPA

PAYPA - Performing Arts & Young People Aotearoa - is the national support entity for artists and organisations engaged in performing arts for, by, and with children and young people in Aotearoa New Zealand. We are a not-for-profit organisation and operate as a leadership organisation and network for practitioners working for and with tamariki and rangatahi, aged 0-25. PAYPA is New Zealand's National Centre for ASSITEJ - the International Association of Theatre for Children and Young People.

What's On?

Join Dr Kerryyn Palmer for a fun drama workshop full of games! Create characters, tell stories, and feel what it's like performing in a real live theatre!

Kerryyn is an arts educator, freelance theatre director, producer, and arts advocate. With a PhD in devising theatre for and with young audiences, she teaches at Te Herenga Waka-Victoria University of Wellington and is the national facilitator for PAYPA (Performing Arts and Young People Aotearoa).

Age range

Suitable for all ages, but for the best experience we recommend applying with a group that are all similar ages.

Venue

The Hannah Playhouse, 12 Cambridge Terrace, Wellington

Times

Wednesday 27 and Thursday 28 August
ONLY:

- 10am - drama workshop only (1 hour)
- 12.30pm - tour of The Hannah followed by drama workshop (1.5 hours)
- 2pm - drama workshop only (1 hour)

Maximum Capacity

Up to 20 students per session



The Circus Hub



About The Circus Hub

Our love and passion for circus arts is at the root of our work to support and grow a thriving circus community in Wellington. The Circus Hub is your local circus school.

What's On?

Here at The Circus Hub, we believe that there's room for every person in the circus. Come join us for a special ArtSplash workshop where students will have the ✨uplifting✨ experience of trying aerial arts, such as aerial hoop, trapeze, and silks. They'll also get to learn ground-based skills, such as juggling, acrobatics, and even equilibristics (balance). No experience required; all types of bodies and minds are welcome (let us know your special requirements ahead of time by emailing your Schools Coordinator).

Age range

Suitable for all ages, but for the best experience, we recommend applying with groups of similar ages.

Venue

The Circus Hub, 11 Hutcheson Road, Newtown (schools will be provided with bus transport to and from the venue)

Times

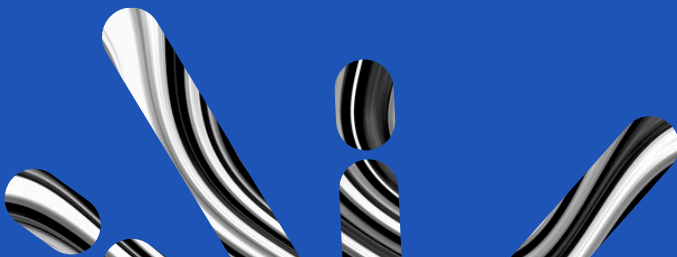
Monday 25 August ONLY:

- 12.30pm (3 hours)

Spend the entire afternoon away with the circus!

Maximum Capacity

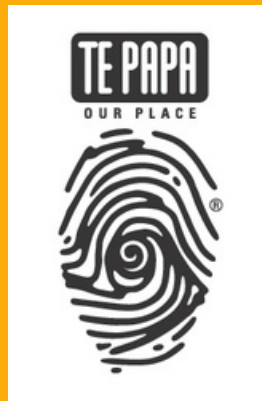
Up 48 students per session



Special
thanks to our
partners



BARBARAN





ArtSplash

**Applications
open 30 April
2025**

**wellington.govt.nz/artsplash
artsplashcoordinator@gmail.com**