

Summary of CEMARS certification



Wellington City Council

Year 1 of 3 year certificate period

Wellington City Council meets the requirements of CEMARS® certification having measured its greenhouse gas emissions in accordance with ISO 14064-1:2006 and committed to managing and reducing its emissions in respect of the operational emissions of its organisation including Council Controlled Organisations that report financially into the council and JVs and excluding Wellington International Airport.

Absolutely Positively Wellington City Council

Me Heke Ki Pōneke

Introduction¹ – Wellington City Council (Council) is the local authority of the residents and ratepayers of Wellington, the capital city of New Zealand. The activities undertaken by the Council include; water supply; waste water collection and treatment; storm water management; solid waste management; provision of transportation infrastructure and street lighting; arts and cultural facilities including libraries, museums, convention centres and a public art gallery; parks, recreation and aquatic facilities; and the provision of regulatory, community and economic development services.

Further information about the Council's activities, including Annual and Long Term Plans is located at www.wellington.govt.nz.

Boundary – Figure 1 below shows the organisational structure used for describing the organisation's greenhouse gas (GHG) emissions inventory, and what business units were included in the inventory in the context of the entire organisational profile. Business units in green are included, business units in blue are excluded. Note the new inclusion of the Karori Sanctuary Trust.

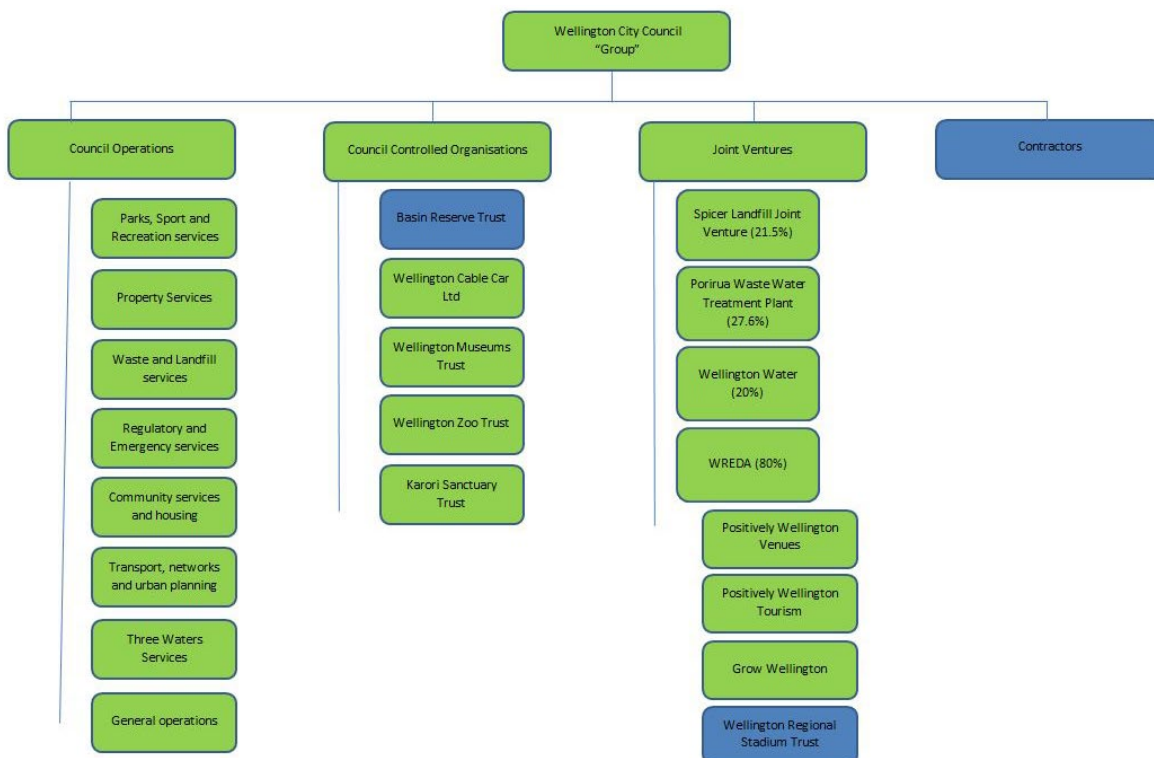


Figure 1: Organisational structure showing business units included and excluded.

¹ **Disclaimer:** This Disclosure Statement is a summary of the verified information considered for certification and the certification decision. It should not be taken to represent the full submission for certification. Whilst every effort has been made to ensure that the information in this Disclosure Statement is accurate and complete, Enviro-Mark Solutions Limited does not, to the maximum extent permitted by law, give any warranty or guarantee relating to the accuracy or reliability of the information.

Summary of CEMARS certification



Wellington City Council

Year 1 of 3 year certificate period

Consolidation approach – The organisational boundaries of the emissions inventory were consolidated based on Financial Control and joint ventures were included based on equity share.

Base year – 1/07/2014 to 30/06/2015

Measurement period – 1/07/2017 to 30/06/2018

Emissions source inclusions – The operational GHG emissions for the organisation by emissions source are shown in Figure 2 below.

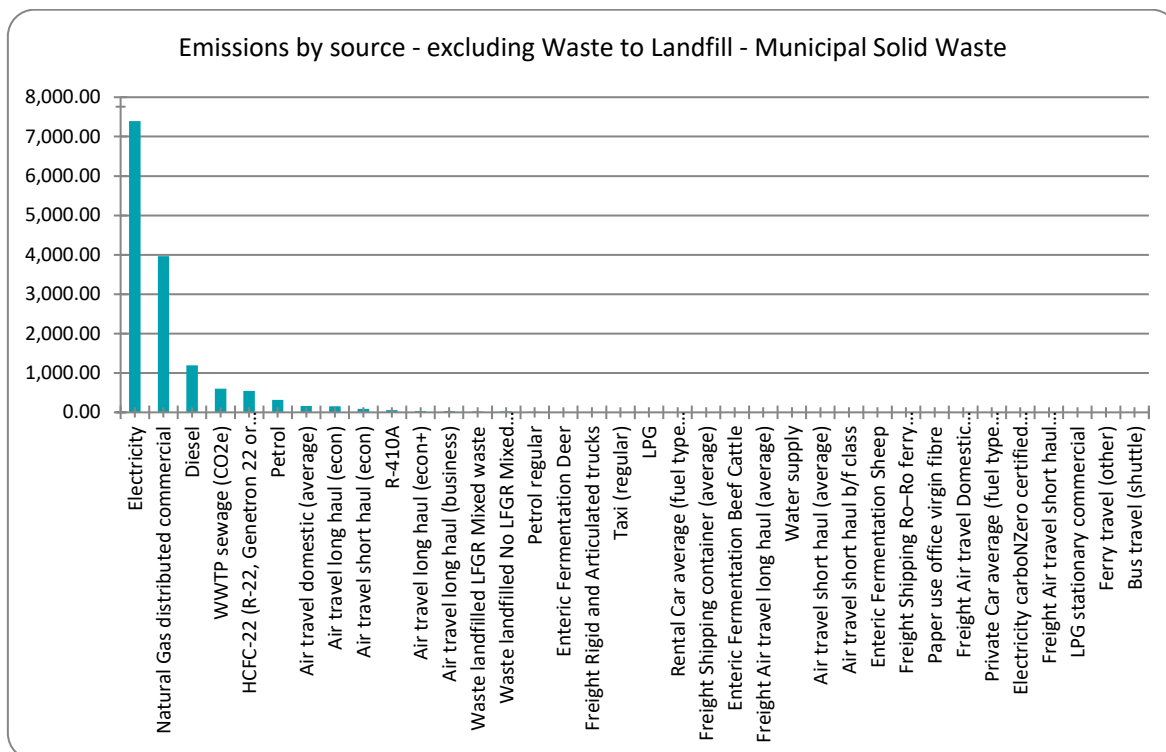
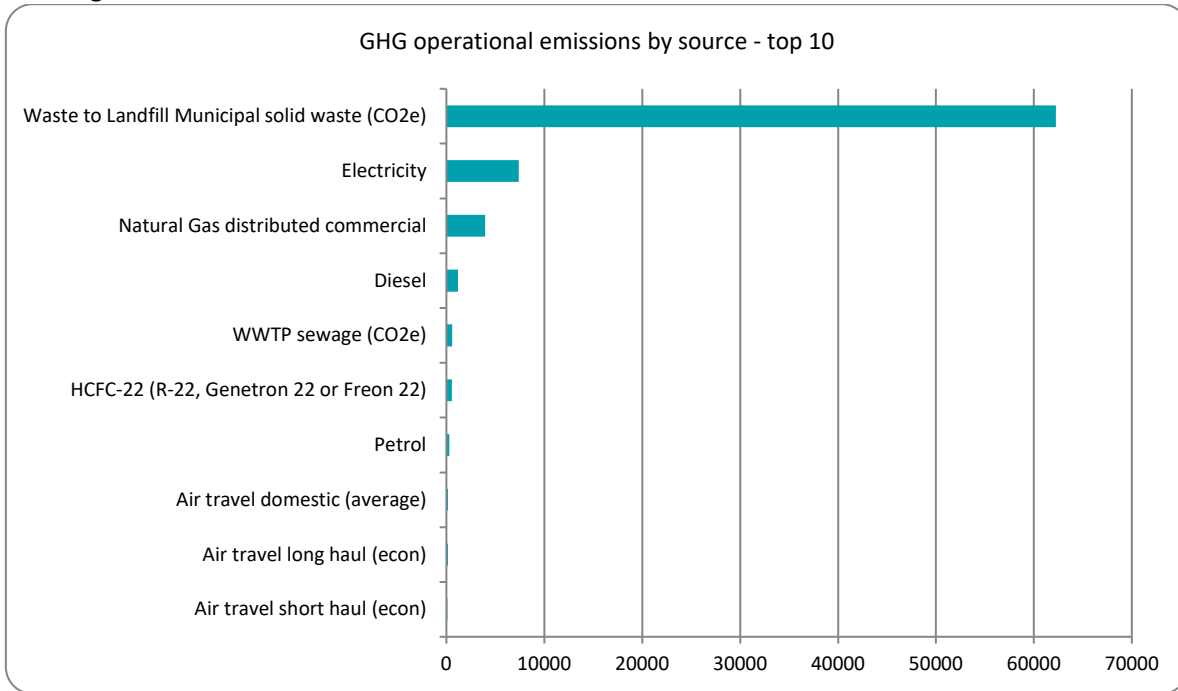


Figure 2a and 2b: GHG emissions by emissions source (tCO₂e).



Summary of CEMARS certification

Wellington City Council

Year 1 of 3 year certificate period

Emissions as tonnes of carbon dioxide equivalents (tCO₂e) for this period were:

| Emissions summary by scopes | | Units |
|-----------------------------|------------------|-------------------------|
| Scope 1 total | 68,299.10 | tCO₂e |
| Scope 2 total | 4,171.56 | tCO₂e |
| Scope 3 total | 4,426.60 | tCO₂e |
| <i>Mandatory scope 3</i> | <i>1,202.34</i> | <i>tCO₂e</i> |
| <i>Additional scope 3</i> | <i>3,224.26</i> | <i>tCO₂e</i> |
| <i>One-time scope 3</i> | <i>0.00</i> | <i>tCO₂e</i> |
| Total inventory: | 76,897.26 | tCO₂e |

Emissions source exclusions – The following emissions sources were excluded from the inventory for this measurement period:

- Freight and couriers – *de minimis*

Emissions reduction commitments – A GHG emissions management plan and reduction targets have been developed. Projects to reduce emissions include:

- Continued co-investment in methane capture at Southern Landfill
- Investigate alternatives for sewage sludge disposal
- Computer sleep mode software
- Incorporate electric vehicles in fleet
- Investigate fleet rationalisation (carshare)
- Ensure best-practice refrigerant management

Emissions reductions summary against last year's plan – This is the 4th year of reporting under CEMARS programme. An absolute reduction in Scope 1 and 2 emissions of 14,967.81 tCO₂e has been achieved against base year. A reduction in emissions intensity (for Scope 1, 2 and mandatory Scope 3 emissions) of 18.08 tCO₂e/\$M has been achieved; based upon a 4 year rolling average.

Verified by – Enviro-Mark Solutions Limited

Data quality score – High

Threshold of materiality – Excluded emissions do not exceed 5% of the total footprint within the organisation boundary stated.

Level of assurance – Reasonable

Certification status – CEMARS certified organisation

Certificate number – 2018109J, Year 1 of 3 year certificate period

Valid until – 14/12/2021

101 Wakefield St, Wellington, 6011, New Zealand
Telephone: (+64 4) 499 4444. Email: info@wcc.govt.nz Web: www.wcc.govt.nz