

2024 Local By-Election

Signage Sites

Wellington City Council

Approved Sites for
Pukehinau/Lambton General Ward

(Council permission required; limit one sign per site per standing category)

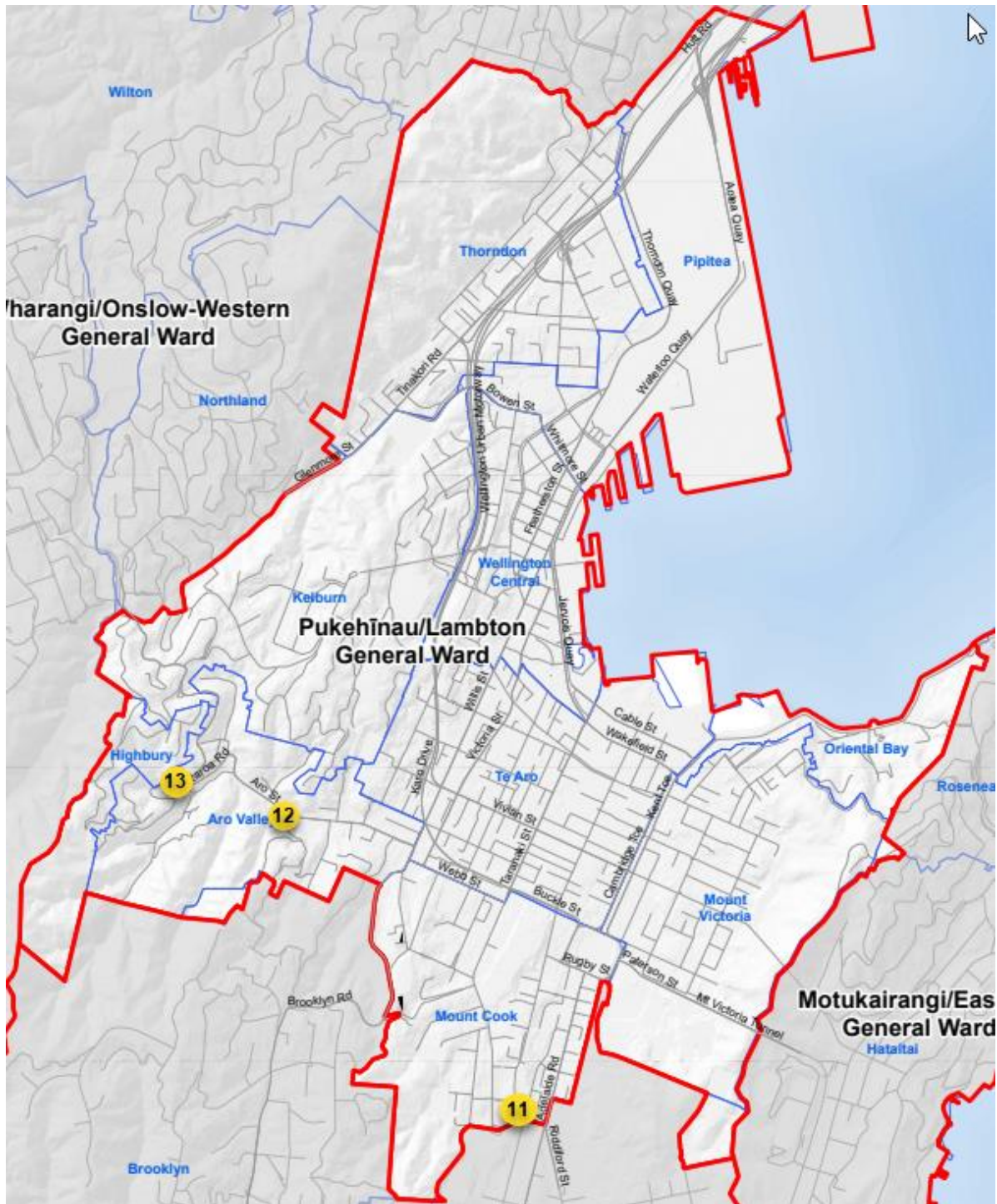
TABLE OF CONTENTS

SIGNAGE SITES

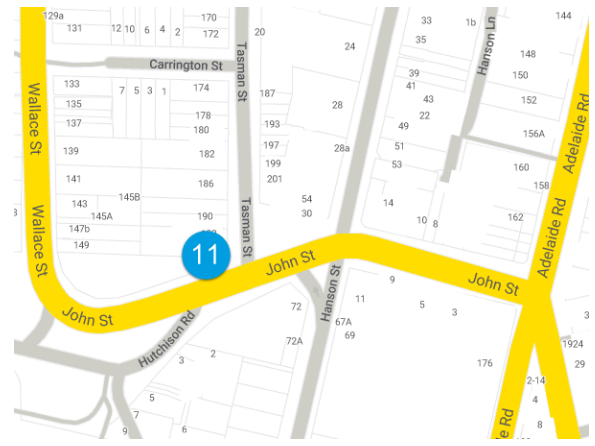
Signage Site 11..... 1

Signage Site 12..... 2

Signage Site 13..... 3



SIGNAGE SITE 11



John St & Tasman St | Mount Cook

northwest corner, on grassy area

SITE-SPECIFIC NOTES

- Do not attach any signage to tree surrounds.



SIGNAGE SITE 12

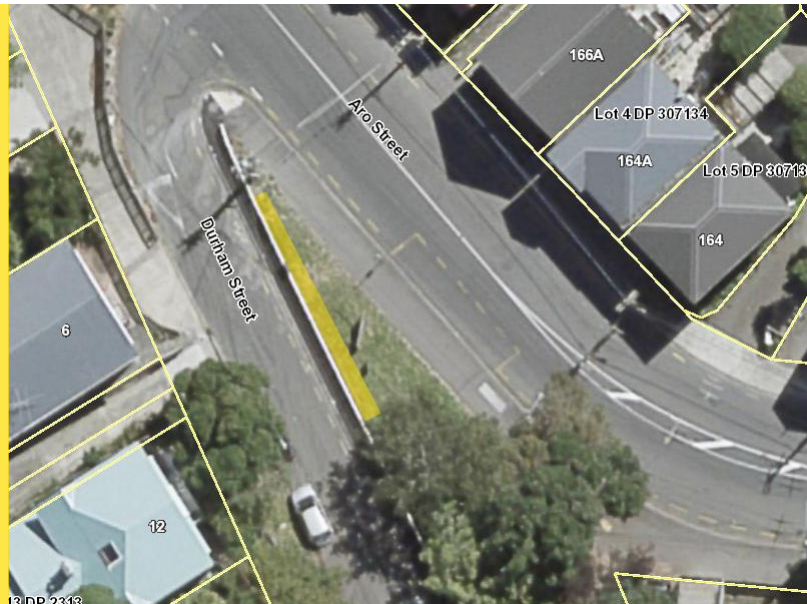


Aro St & Durham St | Aro Valley

on grassy embankment, in front (Aro St side) of

SITE-SPECIFIC NOTES

- Do not attach signage to fencing.
- Place signage in front of the back embankment/fencing but behind the plane of the permanent signage.

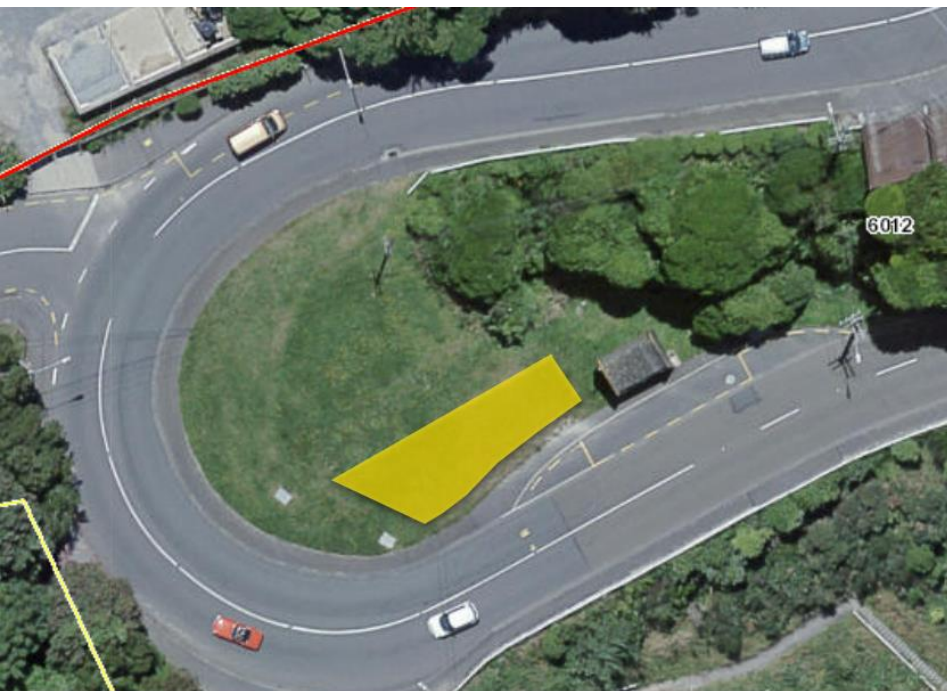


SIGNAGE SITE 13



Raroa Rd & Mount Pleasant Rd | Aro Valley

grassy area on east side of Raroa Road



SITE-SPECIFIC NOTES

- Do not cover or obstruct the services (grey patches).

